

# Lower Grand River Organization of Watersheds

## Guiding Principles

8/4/2016  
Grand Valley Metropolitan Council

# LOWER GRAND RIVER ORGANIZATION *of* WATERSHEDS



## **The Organization and its Environment**

The Lower Grand River Organization (LGROW) is an agency under the Grand Valley Metro Council dedicated to the preservation, improvement and monitoring of the Lower Grand River. The operational model for LGROW was finalized in 2008, and operates under the direction of, and is governed by, the policies and procedures of GVMC.

### ***Our Vision for the Watershed***

Swimming, drinking, fishing, and enjoying our Grand River Watershed: Connecting water with life.

### ***Mission Statement***

Discover and restore all water resources and celebrate our shared water legacy throughout our entire Grand River Watershed community.

### ***Who We Are***

LGROW is the champion organization dedicated to protecting and improving the natural resources of the Lower Grand River Watershed. We do this by providing opportunities for local partners to actively participate in solving watershed problems through innovative education and tools for action.

### ***Programs/Services***

The goal for LGROW is to have sustainable and robust organizational capacity. LGROW is taking ownership of the momentum, going for wins, and keeping it going even when it's hard. We have partners who have the authority and responsibility to make this happen. LGROW is the keeper of the federal and state approved Lower Grand River Watershed Management Plan (August 2011). Currently, LGROW and its partners are implementing recommendations of that plan. The partnership with communities under the NPDES Stormwater permits has been a key to the efforts of LGROW. Its organizational structure maximizes inclusiveness and provides a process for all stakeholders to have a voice.

LGROW is guided by the following documents:

1. GVMC's Articles of Incorporation and By-laws
2. LGROW's Strategic Plan 2015-2017
3. Lower Grand River Watershed Management Plan
4. NPDES Municipal Separate Storm Sewer System (MS4) Stormwater Management Plan

GVMC adopted a Resolution to support the Guiding Principles of LGROW on August 7, 2016.

# Articles of Incorporation

**Article XVI. Creation of Agencies.** The Council may establish such agencies as the Council shall deem appropriate to carry out its functions. The method of establishing an agency and delegating powers and responsibilities to an agency shall be set forth in the Bylaws.

**Article XVII. Bylaws.** The Council shall have the right to adopt and amend bylaws governing its procedure and functions, provided that the bylaws are not in conflict with the terms of these Articles, the Act, or any other applicable statute. Bylaws shall be adopted and amended only upon a majority vote of: 1) the total number of weighted votes of the Members of the Council, and 2) the Members of the Council; except for Section II of the Bylaws, which may be amended only by: 1) a majority vote of the weighted vote and a majority vote of the Members as stated above, and 2) the approval of two-thirds (2/3) of the legislative bodies of the Units who belong to the Council.

**Article XVIII. Amendment of Articles of Incorporation.** These Articles may be amended upon approval of a majority vote of: 1) the total number of weighted votes of the Members of the Council, 2) the Members of the Council, and 3) the members serving on the Legislative Bodies of the participating local governmental Units, if a vote by such local Legislative Body members is required by law.

## GVMC By-Laws

### SECTION VII

#### CREATION OF AGENCIES

**7.1 Establishment.** The Council may establish such agencies as the Council shall deem appropriate to carry out its functions. If the Council believes it will be beneficial to bring into the Council an agency which was established outside of the Council's auspices, it may do so by resolution, contract or such other lawful action as may be appropriate in the circumstances. At the time of establishing each agency, the Council shall state the agency's purpose and the extent of its responsibility.

**7.2 Services.** Each agency shall undertake those duties and responsibilities directed by the Council. The agency may undertake those actions and provide those services in any portion of the Council Area and in such additional areas as are permitted by the Council. If permitted by the Council, the agency shall be allowed to enter into contracts with private individuals or other governmental units or authorities to either provide services to others for a fee or to have services provided for the agency.

**7.3 Delegation of Powers.** Each agency established by the Council under this section shall have only those powers directly granted by the Council. Each agency shall be subject to all restrictions promulgated by the Council. In each event the Council shall retain, at a minimum, the following control over each agency:

- A. Approval of the annual capital and operating budget of the agency. The agency shall not have authorization to make any expenditures in excess of those which are approved in the annual budget. To the extent that any expenditures in excess of those approved in the annual budget are desired, they shall first receive approval by the Council as an amendment to the agency's budget.
- B. Unless specifically exempted by these Bylaws, the Council shall retain the right to overrule or modify any action (resolution, policy decision, rule or regulation, or other action) by an agency within thirty (30) days of receipt by the Council of written notice of the action taken by the agency. Receipt by the Secretary of the Council of a copy of the agency's minutes delineating the action taken shall constitute receipt of notice of that fact by the Council. If the Council desires to overrule or modify an action of the agency, it shall do so by passage of a resolution of the Council, a copy of which shall promptly be sent to the agency.
- C. Each agency shall be subject to compliance with all policies, rules and regulations approved by the Council unless they are specifically exempted by resolution or bylaw of the Council.
- D. All funds received by each agency shall be received in the name of and be the property of the Council.

**7.4 Representation.** The size of each agency and the number of members shall be determined by the Council. The Council shall be solely responsible for appointing members to each agency. To the extent that terms on any agency exceed one (1) year, the Council shall structure the agency so that its members' terms expire in alternate years. The Council shall seek to ensure that each Unit which receives services from the agency has a member to represent it on the agency unless the Council believes that this will create an agency too large in size. The Council may agree to include representation on the agency from non-Units who have contracted for services from the agency and are within the agency's service area. If such an agreement exists, any member who is nominated to the agency by a non-Unit shall be approved by the Council prior to becoming a member of the agency.

# LGROW

## Draft Strategic Plan

### 2015 – 2017

---

#### Who We Are:

LGROW is the champion organization dedicated to protecting and improving the natural resources of the Lower Grand River Watershed. We do this by providing opportunities for local partners to actively participate in solving watershed problems through innovative education and tools for action.

#### Mission Statement:

Discover and restore all water resources and celebrate our shared water legacy throughout our entire Grand River Watershed community.

#### Vision:

Swimming, drinking, fishing, and enjoying our Grand River Watershed: Connecting water with life.

#### Core Values:

Watershed activities are diverse, inclusive, and collaborative. Watershed efforts are sustainable and of high quality. Watershed images and messages create a widely shared sense of legacy and heritage. Watershed methods and products are holistic and employ a systems approach. Watershed organization and program evaluate progress and reward success

#### The Story:

We stopped connecting to our river. We turned our backs. We're starting to realize that we have this amazing resource. We have to continue to make the river a crucial part of this area. We are now starting to focus on the river as part of who we are.

#### LGROW Strengths:

We feel the pulse of the watershed. We empower people passionate about the watershed. We set the foundation with thoughtful planning, and now we are primed for action

#### LGROW Strategic Plan:

Goals	Focus 1:	Focus 2:	Focus 3:
#1: Healthy Watersheds	Address Impaired Waterways	Advance Natural Connections	Promote Sustainable Agriculture
#2: Engaged Community	Involve the Public		
#3: Sustainable and Robust Organizational Capacity	Secure Sustainable Revenue	Strengthen Board	

# Strategic Goal #1: Healthy Watersheds

Remediate water quality impairments in subwatersheds with waterways on Michigan's 303(d) non-attainment list.

## Guiding Principles:

- The recommendations of the Lower Grand River Watershed Management Plan guide our work.
- It's all about empowerment for local communities.
- We seek to promote action in the watershed through the involvement of local partners.
- We believe that local winnable projects can be the basis of creating a movement of action throughout the watershed.
- We believe that LGROW needs to take action to get some of these initial wins.
- We have to measure success in a physical scientific way.
- We are connected to the Great Lakes.

## **Focus 1: Address Impaired Waterways (w/Total Maximum Daily Loads)**

Action Years 1-3:	Action Years 4-8:	Action Years 9-15:
<ul style="list-style-type: none"> <li>• <i>E. coli</i> in Buck Creek goes first. Conduct additional inventories and studies on Buck Creek</li> <li>• Find and eliminate potential sources of <i>E. coli</i></li> <li>• Implement stream improvements and identify fish passage impediments</li> </ul>	<ul style="list-style-type: none"> <li>• Repair or replace failing septic systems, control wildlife populations, reduce agricultural runoff</li> <li>• Revisit county septage ordinance</li> <li>• Begin work on Direct Drainage Tributaries (Yr4), Indian Mill Creek (Yr5), Mud Creek (Yr6), Rush Creek (Yr7), Sand Creek (Yr8)</li> </ul>	<ul style="list-style-type: none"> <li>• Celebrate - Buck Creek will be gorgeous and intact as a safe, cool-water fishery with a sustainable brown trout population</li> <li>• Continue work on other areas and assist with enforcement of septage ordinance</li> </ul>

## **Educational Priority/Community Engagement:**

- *Foster a watershed advocacy group for Buck Creek to conduct place-based volunteerism.*
- *Involve local officials and school districts to pledge commitment to activities to reduce *E. coli* contamination in their waterways*
- *Call to action for LGROW members to coordinate and leverage resources for each subwatershed as it is addressed.*
- *Spread the word that the Grand River is a mecca for recreational enthusiasts*

## Strategic Goal #1: Healthy Watershed (cont.)

Remediate water quality impairments in subwatersheds with waterways on Michigan's 303(d) non-attainment list.

### **Focus 2: Advance Natural Connections: Floodplains, Greenways and Low Impact Development**

Action Years 1-5:	Action Years 6-15:
<ul style="list-style-type: none"> <li>• Further define and update priority areas in Natural Connections Map</li> <li>• Install buffer strips along waterways; preserve riparian lands and secure conservation easements; repair or replace culverts and road/stream crossings that are barriers to fish migration; support local LID efforts; secure areas for wetland restorations; assess communities for floodplain ordinances and identify lands to acquire for flood protection</li> <li>• Work with public and private developments to reduce impervious surfaces and address impacts of climate change</li> </ul>	<ul style="list-style-type: none"> <li>• Install buffer strips along waterways; preserve riparian lands and secure conservation easements; repair or replace culverts and road/stream crossings that are barriers to fish migration; support local LID efforts; facilitate wetland restorations; assist communities with adopting floodplain ordinances and acquiring lands for flood protection</li> <li>• Reduce impervious cover at public and private developments</li> </ul>

#### **Educational Priority/Community Engagement:**

- *Elevate the understanding of the importance of floodplains and green infrastructure in the watershed by implementing the recommendations in the natural connections map.*
- *Train community members in the use of site suitable vegetation and reduced mowing techniques through stormwater permit program and projects like Plaster Creek's RainScaping project.*
- *Educate local communities to adopt sensitive overlay zone ordinances or identify in Master Plans.*

### **Focus 3: Promote Sustainable Agriculture**

Action Years 1-5:	Action Years 6-15:
<ul style="list-style-type: none"> <li>• Install waste storage and composting facilities in critical areas of watershed; assist with identification of areas to complete Comprehensive Nutrient Management Plans; install fencing and alternative watering sources for controlled livestock access to waterways</li> </ul>	<ul style="list-style-type: none"> <li>• Implement manure management planning and implementation at 14 sites in critical areas of watershed</li> </ul>

#### **Educational Priority/Community Engagement:**

- *Identify, recognize and promote Watershed Friendly Farms through social media campaign*
- *Coordinate efforts with Farm Bureau and agricultural preservation and conservation organizations*

## Strategic Goal #2: Engaged Community

Increase the understanding and excitement for the watershed.

### *Guiding Principles:*

- Our education and awareness activities are tied directly to local public interest.
- Our activities are very personal, relevant, and interactive.
- Our messages provide strong core competency in watershed issues.
- Our water is hugely important and people need to understand this.

### **Focus 1: Involve the Public**

Action Years 1-3:	Action Years 4-8:
<ul style="list-style-type: none"><li>• Complete marketing plan</li><li>• Increase passion for the watershed by galvanizing residents through social media, meet-ups, volunteer days, and outdoor activities</li><li>• Increase presence in social media outlets</li><li>• Initiate volunteer program</li><li>• Create and prioritize list of events to attend</li></ul>	<ul style="list-style-type: none"><li>• Establish “Friends of...” groups for subwatersheds</li><li>• Build stable volunteer base for community projects</li><li>• Build new relationships with untraditional partners</li></ul>

### **Educational Priority/Community Engagement:**

- *Young professionals and other youth group involvement, identified activities using Plaster Creek as an example*
- *Annual Forum draws 200 people to listen to policy/actions that affect State of the Watershed*
- *Grow LGROW Membership to include PSIs (Participants, Supporters and Influencers)*



## Strategic Goal #3: Sustainable & Robust Organizational Capacity

LGROW to take ownership of the momentum, going for wins, and keeping it going even when it's hard. We have to have partners who have the authority and responsibility to make this happen.

### Guiding Principles:

- Our role is distinctive in the watershed.
- We are an action organization, not just a planning organization!
- Sustainable revenue will rely on both earned revenue and contributions from partners.
- An engaged board and staff lead to an engaged community

### Focus 1: Secure Sustainable Revenue

#### Action: Year 1-3:

- Continue earned revenue model of MS4 permits to leverage funding to hire two additional paid staff and grow programs.

### Educational Priority/Community Engagement:

- *LGROW has educational staff with budget for watershed-wide activities*
- *All distinct projects have an LGROW lead person to monitoring progress and define success.*

### Focus 2: Strengthen Board

Action Year 1	Action Years 2-3
<ul style="list-style-type: none"><li>• Board discusses and confirms its role in the implementation of the Strategic Plan.</li><li>• Board participates in events and promotes LGROW throughout community</li><li>• Board revises by-laws and articles of organization</li></ul>	<ul style="list-style-type: none"><li>• Conduct training and onboarding of all board members.</li><li>• Offer sponsorship for attending conferences and workshops</li></ul>

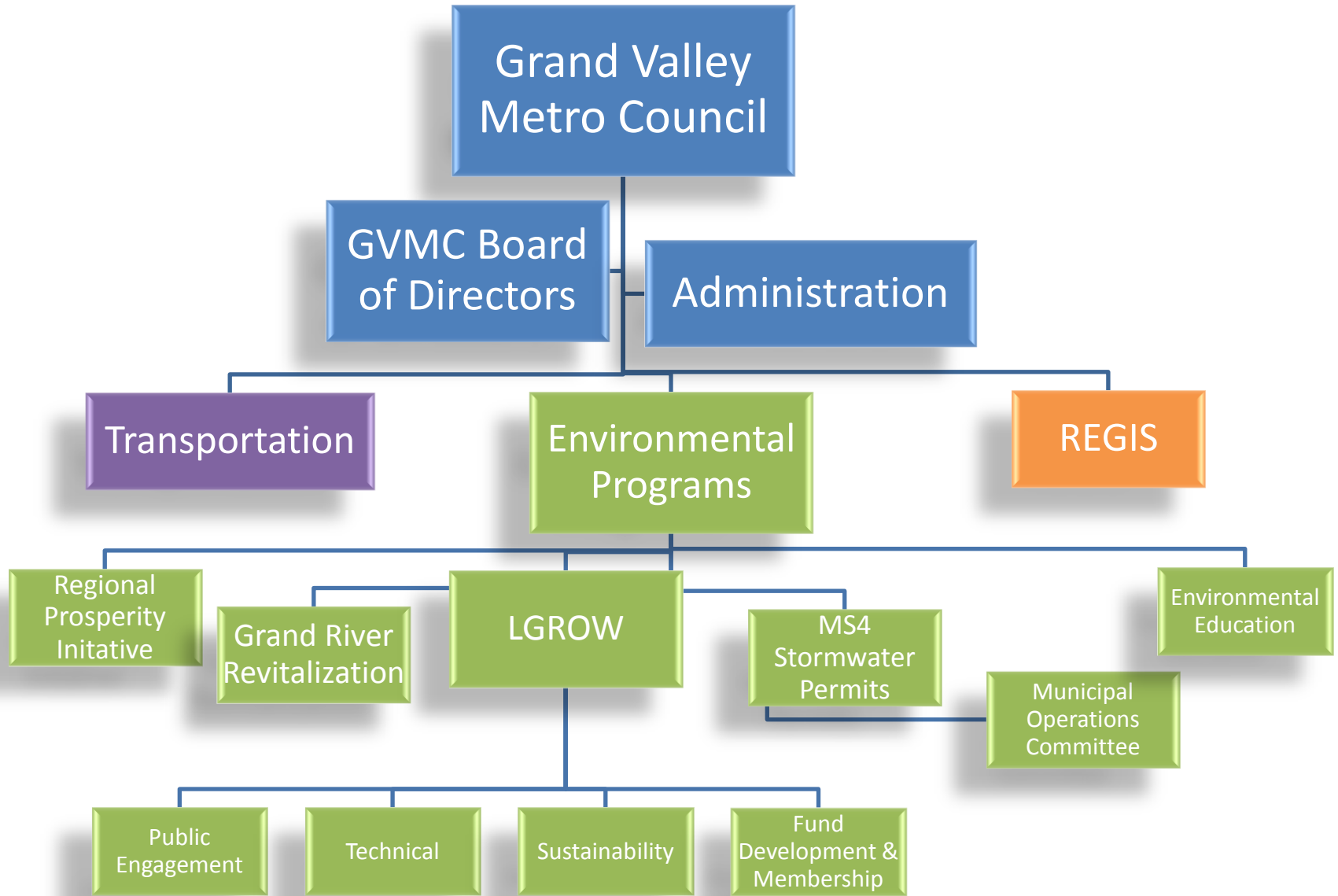
### Educational Priority/Community Engagement:

- *The LGROW Board is engaged in the implementation of the Strategic Plan and has defined and understands its role in leveraging resources and mobilizing community engagement.*

## Logic Model for the *LGROW Business Plan & 2015-2017 Strategic Plan*

<b>Situation:</b> A robust LGROW is needed to pursue management actions for improving water quality while educating and engaging our communities in securing a healthy watershed					
<b>Inputs</b>	<b>Outputs</b>				<b>Outcomes</b>
	<i>Strategic Focus</i>	<i>Years</i>	<i>Management Actions</i>	<i>Education/Engagement Actions</i>	
Funds	<b>Address Impaired (TMDL) Waterways</b>	1-3	Eliminate <i>E. coli</i> in Buck Creek Improve stream functions Remove fish passage barriers	<ul style="list-style-type: none"> <li>- Foster a new Buck Creek group</li> <li>- Involve officials, school districts</li> <li>- Enlist LGROW members</li> <li>- Promote river recreation</li> </ul>	Goal #1 <b>Healthy Watersheds</b>
LGROW Staff		4-8	Fix septic systems Advocate for county Sanitary Code Duplicate efforts in other tributaries		<i>Water quality impairments remediated</i>
LGROW Board of Directors		9-15	Celebrate achievements Continue efforts		
LGROW Partners	<b>Advance Natural Connections</b> (floodplains, greenways, and low impact development)	1-5	Update Natural Connections Map Install various BMPs Involve public/private entities	<ul style="list-style-type: none"> <li>- Elevate understanding</li> <li>- Train community members</li> <li>- Educate communities in adopting LID</li> </ul>	<i>Natural functions restored</i>
Lower Grand River Watershed Management Plan		6-15	Continue installing various BMPs Reduce impervious cover		
Lower Grand River Watershed Management Plan	<b>Promote Sustainable Agriculture</b>	1-5	Install agricultural BMPs	<ul style="list-style-type: none"> <li>- Promote watershed friendly farms</li> <li>- Coordinate with agricultural groups</li> </ul>	<i>Farmers produce clean water</i>
Community Support		6-15	Implement agricultural waste management BMPs		
Community Support	<b>Involve the Public</b>	1-3	Complete marketing plan Galvanize residents Increase social media presence Initiate volunteer program Prioritize events	<ul style="list-style-type: none"> <li>- Inspire and recruit young professionals and youth groups</li> <li>- Attract 200+ to attend Annual Forum</li> <li>- Grow LGROW membership</li> </ul>	Goal #2 <b>Engaged Community</b>
Scientific Research		4-8	Establish "friends" groups Build volunteer base Build partnerships		<i>Watershed understood by community</i>  <i>Excitement increased in community</i>
Scientific Research	<b>Secure Sustainable Revenue</b>	1-3	Leverage funding from earned revenue to hire staff	<ul style="list-style-type: none"> <li>- Retain education staff</li> <li>- Dedicate staff to projects</li> </ul>	Goal #3 <b>Robust Organization</b>
	<b>Strengthen Board</b>	1	Confirm Board's role in Strategy Encourage full Board participation Revise organizational by-laws	<ul style="list-style-type: none"> <li>- Engage Board in Strategic Plan implementation</li> <li>- Define Board role in community education and engagement</li> <li>- Conduct Board training sessions</li> </ul>	<i>Momentum maintained</i>
		2-3	Offer sponsorship for events Revise Strategic Plan		<i>Partnerships and resources leveraged</i>

# GVMC Organizational Structure



# Lower Grand River Watershed Management Plan



August 2011  
MDEQ Tracking Code 2007-0137

LOWER GRAND RIVER  
ORGANIZATION *of* WATERSHEDS



Michigan's  
Nonpoint Source  
Program

## Summary of the Lower Grand River Watershed Management Plan

The Lower Grand River Watershed Management Plan (WMP) was approved in August 2011 by the Michigan Department of Environmental Quality and the US Environmental Protection Agency as meeting the Nine Elements, recommended best management practices (BMPs) to reduce nonpoint source pollution. The WMP delineated 31 Subwatershed Management Units (SMU) within its boundary. Since then, several subwatersheds have initiated projects and installed numerous BMPs to improve water quality. Concerted efforts in the Rogue River, Plaster Creek, Bass River, Deer Creek and Coldwater River have been most successful and coincide with MDEQ's targeted watersheds for the Lower Grand River Watershed (LGRW). Plaster Creek has installed large vegetated swales to capture and slow down runoff. The Rogue River Watershed has created a Stormwater Guidebook for local officials to use in approving new developments. The communities in the urbanized area with stormwater permits are reducing the rate and volume of stormwater runoff and associated total suspended solids. Projects in the direct drainage areas of the Grand River have not been as active as those in the subwatersheds due to its large area and a multi-jurisdictional boundary. The Grand River does, however, have several of the same water quality concerns as its tributaries, namely sediment, nutrients and pathogens.

The recommendations of the Watershed Management Plan are options that can be voluntarily implemented to achieve water quality goals. It will be important to sustain the voluntary implementation of the Plan's recommendations to ensure that the conditions in the Lower Grand River Watershed (Watershed) improve, thereby reducing the need for state regulations and mandates. Success of the WMP depends on consistent support from local governments, citizens, and businesses. Each of these communities has distinct needs that will require different strategies. However, to remain committed to a common water quality goal will require ongoing coordination of the intentions and actions of all these groups.

The ongoing success of LGROW is vital not only to improving water quality in the Grand River, but also improving the quality of all lives throughout the Great Lakes Basin. Through their continued use of this WMP in the Lower Grand River, LGROW can play a significant part in improving the quality and availability of waters throughout the entire state and region. By joining with other watersheds, including those in upper reaches of the Grand River, and with efforts to improve water resources below ground, in the atmosphere, and in our surrounding Great Lakes, LGROW can broaden its reach, share its knowledge, and learn from others as we tackle the most significant issues facing us today. Among these are: finding effective ways to moderate the negative effects of human activities, restoring balance to large-scale disturbances in global ecosystems including climate and energy, to improve the quality of life for all social classes, and to more efficiently invest in a future built upon sustained natural ecosystem services.

A WMP and its supporting organization can only go so far in accomplishing such wide-scaled change. While LGROW's mission is related specifically and directly to improving the waters in their charge, real change will only be through involvement with collaborations and partners dedicated to making long-term successful lives from our homes, local towns, and subwatersheds, all the way up to our cities, regions, states, and nation. It is in this spirit, that of connecting the improvements in each of the hundreds of local rivers throughout our Watershed with the larger needs of our entire community and citizenry at large, that we have created this WMP. LGROW's mission is to empower areas of the watershed to solve water resource issues locally, so the information will assist those areas where a watershed group does not exist.

The full document is available at [www.lgrow.org/watershedmanagementplan](http://www.lgrow.org/watershedmanagementplan).



# Lower Grand River NPDES Stormwater Program

A cooperative effort initiated in 2000 by Kent County and Ottawa County agencies and communities in the Lower Grand River Watershed resulted in Certificates of Coverage (CoCs) for all permittees under the Michigan Department of Environmental Quality Watershed General Permit No. MIG619000. GVMC prepared the following documents for the communities to comply with the permit:

- Public Participation Process (PPP)
- Watershed Management Plan (WMP)
- Public Education Plan (PEP)
- Illicit Discharge Elimination Plan (IDEP)
- Stormwater Pollution Prevention Initiatives (SWPPIs)
- Annual Progress Reports

The Grand Valley Metro Council (GVMC) is continuing to coordinate a regional effort to comply with the NPDES Stormwater Regulations. Several Committees have been working to address different subject areas to make program implementation as efficient as possible. Every participating Municipal Separate Storm Sewer System (MS4) permittee has a representative on at least one committee. Committee meetings have also been used to update everyone on the progress of the other committees and the program in general. The committees are as follows:

- Public Engagement
- Stormwater Ordinance
- Technical

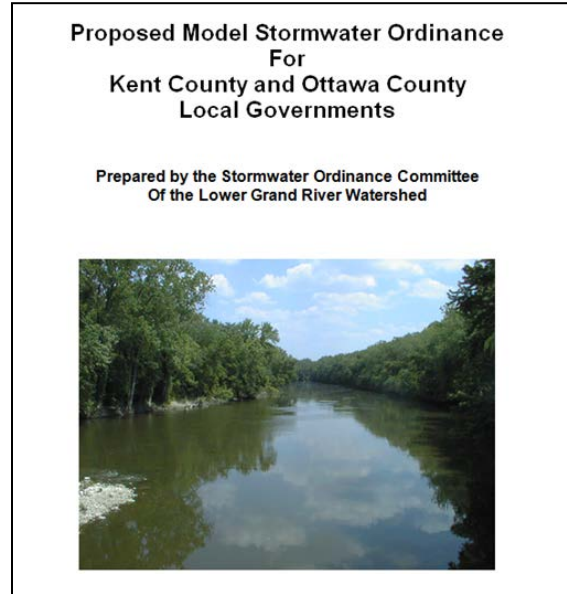
## Public Engagement Committee

The Public Engagement Committee (<http://www.lgrow.org/MS4pampep>) has been functioning as a joint committee of the Lower Grand River Organization of Watersheds (LGROW) and the permitted Lower Grand MS4 communities since January of 2014. The goals of LGROW, the Lower Grand River Watershed Management Plan, and the MS4 Public Education Plan align closely, and through this joint committee's combined efforts, the result has been a larger group of involved stakeholders. This group shares the common goals of raising awareness about the Lower Grand River Watershed (LGRW) and improving the water quality within that watershed. This year, the group focused on selecting outreach events and activities which provided access to the target audiences identified in the PEP and identifying activities that would result in a behavioral change on the part of those who participated.



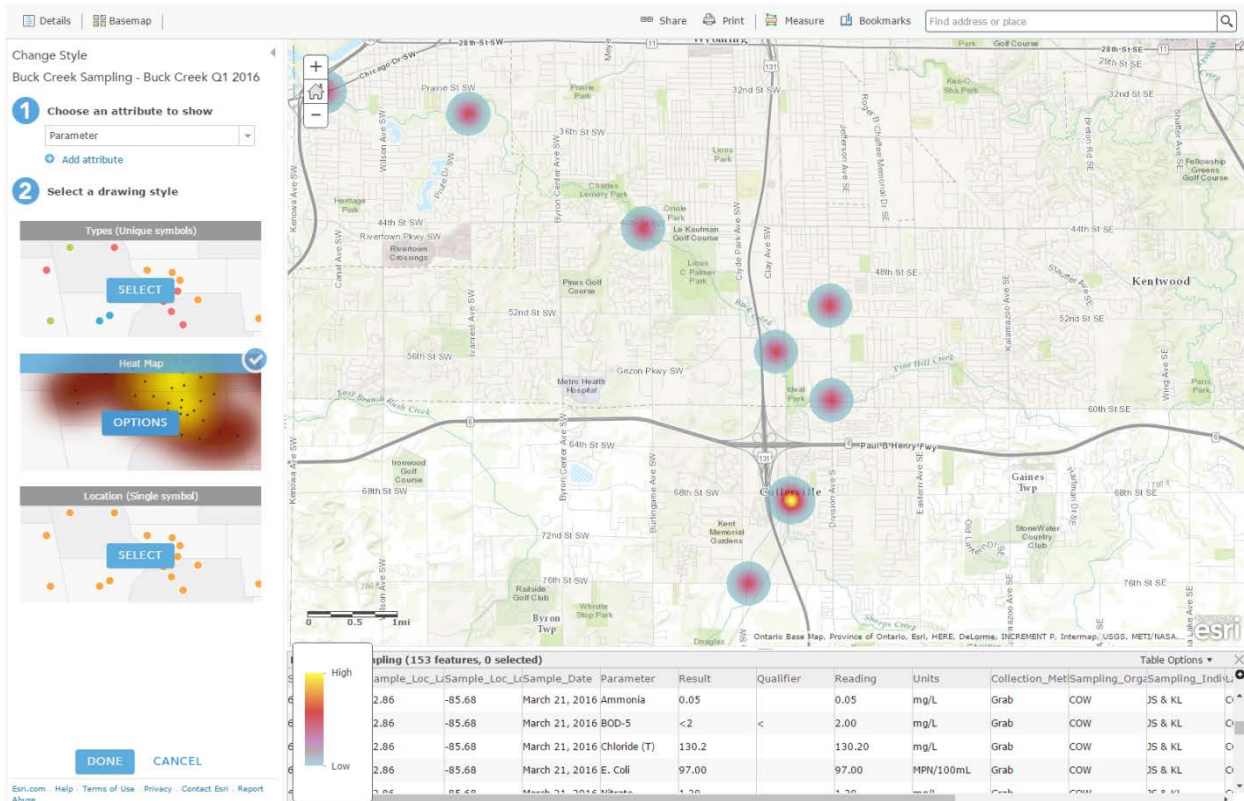
## Stormwater Ordinance (SWOrd) Committee

The SWOrd Committee (<http://www.lgrow.org/MS4pccord>) drafted and submitted an alternative approach to MDEQ for the channel protection standard to address sites where it is not feasible or allowable to permanently retain stormwater as specified by the permit requirements. The alternative approach requires prospective developers to proceed through a series of steps to evaluate the potential for each site to meet the channel protection requirement as laid out in the permit. Once requirements for site design and soil testing were met, developers would then be allowed to consider the use of extended detention with controlled release where barriers to infiltration exist. Three scenarios were reviewed for several sites of various sizes and soil conditions throughout the regulated areas of the watershed. The first scenario utilized the existing development requirements as they are in place today, the second scenario used permit specified development requirements, and the third used the alternative approach. The results showed that the alternative approach, as proposed, allowed for channel protection in a greater number of areas than the permit requirements as written. FTCH was retained to work with the SWOrd Committee and develop a Stormwater Ordinance and a Stormwater Calculator to help developers and designers comply with the permit regulations. This model ordinance will be submitted to MDEQ once approved by all of the MS4 communities.



## Technical Committee

The Technical Committee (<http://www.lgrow.org/MS4Technical>) shifted its primary focus from the approval of the Illicit Discharge Elimination Plan (IDEP) and outfall screening to the development of a new focus detail document titled "Watershed Monitoring to Evaluate Effectiveness of Nonpoint Source Pollution and Municipal Stormwater Runoff Controls and Practices." During 2014, the group refined the Technical Committee focus detail and began working through the objectives set forth in the document. In 2015, the committee members focused on the development of a watershed monitoring manual to guide the collection, processing, and storage of data in the Lower Grand River Watershed. This manual will guide groups including the newly formed Buck Creek Friends group and the Lower Grand River TMDL monitoring, as required by the MS4 permit. The committee is finalizing data collection and screening procedures, developing a Data Repository, and planning ahead for implementation for the TMDL monitoring. This will require the committee to secure partners and funding to conduct the actual sampling.



## Training

GVMC provides multiple training documents and DVDs for Permittee use and hosted or partnered on several training events during the reporting period. A lending library of training materials is housed at GVMC and is available to all watershed partners to assist with the Municipal Employee Training requirements of the discharge permit. Each permitted community also conducted a detailed review of their current inspection and maintenance procedures for structural BMPs as well as a detailed review of operational BMPs. This information was submitted with each community's new individual MS4 permit application in April of 2015. Preparation of the BMP manuals, which were submitted, proved to be a valuable training tool for Permittees to ensure that their current procedures were updated and adequately protect stormwater.

## Monitoring

The Grand River Water Quality Index (WQI) is used to show the trend of Grand River water quality downstream of Grand Rapids. A WQI of 71-90 indicates good water quality with high diversity of aquatic life and very few limits for recreational use. Grand Rapids has been monitoring the Grand River for forty years and all of the data are available upon request. Additional sampling being conducted by Grand Rapids and the other MS4 communities will be expanded and used to measure progress in water quality improvements.



# **RESOLUTION**

## **Resolution in Support of the Lower Grand River Organization of Watersheds' Guiding Principles**

June 16, 2016

WHEREAS, as the Grand Valley Metropolitan Council is a council of 38 local governments representing over 700,000 people; and

WHEREAS, GVMC's Mission is to advance the current and future well-being of our metropolitan area by bringing together public and private sectors to cooperatively advocate, plan for, and coordinate the provision of services and investments which have environmental, economic, and social impact; and

WHEREAS, the Lower Grand River Organization of Watersheds (LGROW) is an agency of GVMC to bring together local municipalities and community stakeholders in a unique format to address watershed issues facing the Lower Grand River and its watersheds.

WHEREAS, LGROW promotes community education and sustainable use of our river resources through the guidance of LGROW's Business Plan and Strategic Plan; and

WHEREAS, LGROW works with local communities on the NPDES municipal separate storm sewer systems permits and grants; and

WHEREAS, LGROW is committed to making the watershed an ongoing resource for all of us through the implementation of the Lower Grand River Watershed Management Plan; and

WHEREAS, LGROW's Board of Directors is comprised of a Chair, Past Chair, Vice-Chair, Public Engagement Committee Chair, Technical Committee Chair, Sustainability Committee Chair, Fund Development & Membership Committee Chair, and Stormwater Ordinance Committee Chair; and

WHEREAS, LGROW membership is defined by level of dues payment amount; and

WHEREAS, LGROW's budget is reviewed and approved annually by the GVMC Board,

THEREFORE BE IT RESOLVED, that the Grand Valley Metropolitan Council does hereby support the Guiding Principles of LGROW.

This Resolution declared adopted by the Grand Valley Metropolitan Council August 4, 2016

John W. Weiss

Al Vanderberg