

# Lower Grand River Watershed Progress Report

## City of Hudsonville

Reporting Period: August 1, 2017– July 31, 2018

Prepared by the:

**GVMC**

Grand Valley Metropolitan Council

Environmental Programs

678 Front Avenue Suite 200

Grand Rapids, Michigan 49504

(616) 776-7702

<http://www.lgrow.org>



## Contents

Purpose.....	1
Part 1 – Contact Information .....	2
Part 2 – Municipal Stormwater Pollution Prevention Initiatives (SWPPI) Commitments.....	3
Part 2A - Lower Grand River Watershed Management Plan Prioritized Objectives.....	13
Part 2B - Stormwater Controls Inspection, Maintenance and Effectiveness .....	18
Part 2C - Procedures Status.....	22
Part 2D - Staff and Contractors Training on Pollution Prevention and Good Housekeeping.....	23
Part 2E - Post Construction Controls Activities .....	26
Part 3 - PEP.....	28
PART 4 - IDEP .....	54
PART 5 - New Point Source Discharges of Stormwater.....	58
PART 6 - Nested Drainage System Agreements.....	59
PART 7 - Other Actions.....	60
PART 8 - Revisions to the SWPPI .....	61
Additional Documentation.....	62

## Tables

Table 1 LGRW Committee Membership List as of July 31, 2018.....	3
Table 2 LGRW Part 91 Administration Authority as of July 31, 2018 .....	16
Table 3 Public Engagement Committee Membership.....	28
Table 4 LGROW and MS4 Participant Events .....	34

## Figures

Figure 1 Grand Rapids Water Quality Index Web Interface .....	11
Figure 2 LGROW Data Repository.....	11
Figure 3 Page Visits to LGROW.org by Month.....	30
Figure 4 Facebook Communication Data by Month .....	31

## List of Abbreviations/Acronyms

AWRI	Annis Water Resources Institute
BMP	Best Management Practice
CES	Center for Environmental Study
CoC	Certificate of Coverage
DIP	Data, Information, and Procedures
DPW	Department of Public Works
GI	Green Infrastructure
GVMC	Grand Valley Metropolitan Council
HD	Health Department
ICMA	International City/Country Management Association
IDEP	Illicit Discharge Elimination Plan
I&E	Information and Education
KCDC	Kent County Drain Commissioner
KCRC	Kent County Road Commission
KIH	Kent Innovation High School
LGROW	Lower Grand River Organization of Watersheds
LGRW	Lower Grand River Watershed
LID	Low Impact Development
MACC	Macatawa Area Coordinating Council
MDEQ	Michigan Department of Environmental Quality
MGROW	Middle Grand River Organization of Watersheds
MS4	Municipal Separate Storm Sewer System
MSUE	Michigan State University Extension
MWEA	Michigan Water Environment Association
NOAA	National Oceanic and Atmospheric Administration
NPDES	National Pollutant Discharge Elimination System
NPS	Nonpoint Source
O&M	Operation and Maintenance
OCWRC	Ottawa County Water Resources Commissioner
PCC	Post-Construction Controls
PEP	Public Education Plan
POS	Point-of-Sale
SEMCOG	Southeast Michigan Council of Governments
SESC	Soil Erosion and Sedimentation Control
SWPPI	Stormwater Pollution Prevention Initiative
TMDL	Total Maximum Daily Load
TSS	Total Suspended Solids
USEPA	U.S. Environmental Protection Agency
WMEAC	West Michigan Environmental Action Council
WMP	Watershed Management Plan
WMSECN	West Michigan Soil Erosion Control Network
WMSRDC	West Michigan Shoreline Regional Development Commission
WQI	Water Quality Index

## **Purpose**

This Lower Grand River Watershed Progress Report was developed by the Grand Valley Metropolitan Council's (GVMC) Department of Environmental Programs in collaboration with the regulated communities within the Lower Grand River Watershed. This document satisfies the requirement set forth in the Michigan Department of Environmental Quality's (MDEQ) National Pollutant Discharge Elimination System (NPDES) Wastewater Discharge General Permit, Storm Water Discharges from Municipal Separate Storm Sewer Systems (MS4s) Subject to Watershed Plan Requirements as outlined in Section B(3).

## Part 1 – Contact Information

<b>Contact Information for Michigan Department of Environmental Quality (MDEQ):</b>	
Please provide current contact information for MDEQ to use regarding stormwater issues.	
<b>Permit Application Contact</b>	
Name	Jill Frielink
Title	DPW Executive Assistant
Address	3275 Central Blvd
City, State, Zip	Hudsonville, Michigan 49426
Telephone (with area code)	(616) 669-0200
Fax (with area code)	(616) 669-2330
E-mail	jfrielink@hudsonville.org
<b>Stormwater Program Manager</b>	
Name	Robert Miller / Jill Frielink
Title	Public Works Superintendent / DPW Executive Assistant
Address	3275 Central Blvd
City, State, Zip	Hudsonville, Michigan 49426
Telephone (with area code)	(616) 669-0200
Fax (with area code)	(616) 669-2330
E-mail	rmiller@hudsonville.org / jfrielink@hudsonville.org
<b>Stormwater Permit Fee Billing Address</b>	
Name	City of Hudsonville
Title	
Address	3275 Central Blvd
City, State, Zip	Hudsonville, Michigan 49426
Telephone (with area code)	(616) 669-0200
Fax (with area code)	(616) 669-2330
E-mail	jfrielink@hudsonville.org

## Part 2 – Municipal Stormwater Pollution Prevention Initiatives (SWPPI) Commitments

Committees have been working to address different subject areas to make program implementation as efficient as possible. Municipal Separate Storm Sewer System (MS4) permittees participate in the Lower Grand River Organization of Watersheds (LGROW) committees. Committee meetings have also been used to update everyone on the progress of the other committees and the program in general. The committees are as follows:

- Public Engagement Committee
- Stormwater Ordinance Committee (SWOrd)
- Technical Committee
- Sustainability Committee
- Fund Development and Membership Committee
- LGROW Executive Committee

The list of committee members who have served on the committees during this reporting period are indicated in Table 2 below. Members denoted with an asterisk are not MS4 permitted representatives.

<b>Community</b>	<b>Representative</b>	<b>Public Engagement</b>	<b>Stormwater Ordinance (SWOrd)</b>	<b>Technical</b>	<b>Sustainability</b>	<b>Fund Development &amp; Membership</b>	<b>LGROW Executive</b>
Cascade Charter Township	Mr. Steve Peterson						
East Grand Rapids, City of	Mr. Brian Donovan					X	X
East Grand Rapids, City of	Mr. Doug LaFave						
Forest Hills Public Schools	Ron Boezwinkle						
Fruitport, Village of	Jeremy Statler						
Georgetown Charter Township	Mr. Rod Weersing	X					
Grand Haven, City of	Ms. Cheryl Davidson	X					
Grand Rapids Charter Township	Bob Versluys						
Grand Rapids, City of	Mr. Mike Lunn			X			

**Table 1. LGROW Committee Membership List as of July 31, 2018**

<b>Community</b>	<b>Representative</b>	<b>Public Engagement</b>	<b>Stormwater Ordinance (SWOrd)</b>	<b>Technical</b>	<b>Sustainability</b>	<b>Fund Development &amp; Membership</b>	<b>LGROW Executive</b>
Grand Rapids, City of	Ms. Carrie Rivette	X	X		X	X	X
Grand Rapids, City of	Mr. Michael Staal	X	X		X		
Grand Rapids, City of	Mr. Dan Taber		X	X			
Grandville, City of	Mr. Ken Krombeen		X			X	X
Grandville, City of	Mr. Todd Wibright			X			
GVSU*							
Hudsonville, City of	Ms. Jill Frielink	X					
KCDC	Mr. Brad Boomstra		X				
KCRC	Mr. Bruce Schutte	X					
Kent County Health Department*	Mr. Brendan Earl	X					
Kent Resource Recovery*	Ms. Megan Kretz	X					
Kentwood, City of	Mr. Jim Beke		X	X			
Kentwood, City of	Mr. Dan Vanderheide		X				
Kentwood, City of	Ms. Kelsey Sloan	X		X			
MDEQ*	Ms. Amanda St. Amour						
MDEQ*	Ms. Michelle Storey	X				X	
MDEQ*	Ms. Dana Strouse	X		X			
OCWRC	Mr. Dennis Cole	X	X				
OCWRC	Ms. Angela Walachovic	X					
OCRC	Mr. Jerry Olman	X					
Plainfield Charter Township	Mr. Rick Solle		X				
Plainfield Charter Township	Ms. Mary Trapp-Gunst	X					

**Table 1. LGROW Committee Membership List as of July 31, 2018**

<b>Community</b>	<b>Representative</b>	<b>Public Engagement</b>	<b>Stormwater Ordinance (SWOrd)</b>	<b>Technical</b>	<b>Sustainability</b>	<b>Fund Development &amp; Membership</b>	<b>LGROW Executive</b>
Spring Lake, Village of	Ms. Chris Burns						
Walker, City of	Mr. Scott Conners		X			X	X
Walker, City of	Ms. Rachell Nagorsen	X	X	X	X		X
Wyoming, City of	Mr. Aaron Vis	X		X			X
Wyoming, City of	Mr. Myron Erickson		X				

### **Public Engagement Committee**

The Public Engagement Committee met on September 13, 2017, November 8, 2017, January 10, 2018, February 14, 2018, and May 16, 2018 during the reporting period. Agendas and minutes for the meetings are posted to <https://www.lgrow.org/public-engagement>. Throughout the reporting period, the group focused on implementation of the updated Public Education Plan (PEP) approved in February of 2013, available here: <https://www.lgrow.org/ms4information>.

The Public Engagement Committee has been functioning as a joint committee of the Lower Grand River Organization of Watersheds (LGROW) and the permitted Lower Grand MS4 communities since January of 2014. The goals of LGROW, the Lower Grand River Watershed Management Plan, the strategic plan, and the MS4 Public Education Plan align closely, and through this joint committee’s combined efforts, the result has been a larger group of involved stakeholders. This group shares the common goals of raising awareness about the Lower Grand River Watershed (LGRW) and improving the stormwater quality within the watershed. The group focuses on messaging and outreach events that address the target messages of: Personal Watershed Stewardship, Ultimate Stormwater Discharge, Public Reporting of Illicit Discharges, Personal Actions that can Impact the Watershed, Waste Management, Management of Riparian Lands. A detailed list of these events and the outreach conducted during this reporting period is provided in Part 3.



### **SWOrd Committee**

The Storm Water Ordinance (SWOrd) Committee met on January 12, 2018, March 9, 2018, March 27, 2018, May 15, 2018 and July 16, 2018 during the reporting period. Meetings were focused on follow up items related to the LGRW alternative approach, the model ordinance, the standards manual, and the stormwater design spreadsheet for MS4 permittees to utilize in their implementation of the new post-construction stormwater control requirements outlined in the 2016 NPDES Permit Application.

The committee finalized templates for the standards manual, model ordinance, the standards manual BMP design criteria appendix, and the LGROW Design Spreadsheet based on feedback from the Michigan Department of Environmental Quality (MDEQ) after the April 2015 submittal of the alternative approach for channel protection. The standards manual follows the steps outlined in the flow chart submitted with the permit applications for the design, review, and permitting of sites with post construction controls. The standards manual was developed in tandem with a LGROW Design Spreadsheet to assist site designers and reviewers to ensure site designs meet all the regulatory criteria outlined in the permit. The development of maintenance agreements per the stormwater post-construction controls is ongoing, and will continue through the next reporting period.

The manual and Design Spreadsheet tools are also designed to ensure that the alternative approach is only utilized as a last resort. The committee finalized the model ordinance for communities to customize for the application of these standards. On March 14, 2018 a meeting was held by GVMC for all MS4's in order to update each community with the progress made regarding their permit application. Since this work began in 2015, much of this reporting period was spent editing and revising permit application documents to accurately reflect how each community implements their MS4 program, accounting for new stormwater regulations under the next MS4 permit.

### **Technical Committee**

The Technical Committee met on August 16, 2017, October 18, 2017, December 20, 2017, February 14, 2018, April 18, 2018, and June 20, 2018 during this reporting period. Agendas and minutes from the meetings are available at the following site: <https://www.lgrow.org/technical-committee>. During the reporting period, the committee members focused on the development of the LGROW Data Repository, which will serve as a resource for the sharing and viewing of water quality data collected throughout the watershed. The Data Repository can be accessed here: <https://www.lgrow.org/data-repository/>

The Committee also continued work on the watershed monitoring manual to guide the collection, processing, and storage of data in the Lower Grand River Watershed and the Lower Grand River Total

Maximum Daily Load (TMDL) monitoring, as required by the MS4 permit. The committee is coordinating the TMDL monitoring in the stream reaches identified in the MS4 Permit application letters. The City of Wyoming and the City of Grand Rapids are providing sampling equipment and laboratory space to collect and analyze the samples. This work will continue into the next reporting period. At the October 2017 meeting, the committee enjoyed an engaging presentation from a representative from the United States Geological Survey (USGS). IDEP outfall screening was also a focus of the Technical Committee, since many of the MS4's in the watershed were planning to complete this work during the summer of 2018.

## **Training**

GVMC provides multiple training documents and DVDs for Permittee use. Documents are available at: <https://www.lgrow.org/ms4information>. Training materials, including newsletter articles for communities to provide to residents, can be found on the LGROW website. In addition, GVMC has hosted or partnered on several training events during the reporting period including:

- 15<sup>th</sup> Annual Grand River Spring Forum
  - Held on May 11, 2018 at the Cascade Library
- Stormwater General Awareness and IDEP
  - Offered May 22 and 23, 2018 in both Kent and Ottawa Counties
- Lunch and Learn
  - Offered at GVMC on June 29, 2018 hosted by Upstream Technologies

## Training Library

A lending library of training materials is housed at GVMC and is available to all watershed partners to assist with the Municipal Employee Training requirements of the discharge permit. The following materials are currently available:

DVD from Excal Visual, LLC

- IDDE – A Grate Concern: Illicit Discharge Detection & Elimination (14¼ Minutes)

DVD from Excal Visual, LLC

- Storm Watch - Municipal Stormwater Pollution Prevention (20 Minutes)

DVD from Excal Visual, LLC

- Stormwater Pollution Prevention - A Drop in the Bucket (16 Minutes)

DVD from Excal Visual, LLC

- Ground Control - Stormwater Pollution Prevention for Construction Sites (14.5 Minutes)

DVD from Excal Visual, LLC

- Spills & Skills - Non-Emergency HazMat Spill Response (18.5 Minutes)

DVD from Southeast Michigan Council of Governments (SEMCOG) and the Road Commission for Oakland County

- Keep An Eye On It! - Environmental Awareness for Gravel Road Maintenance (18.5 Minutes)

DVD from USEPA - Reduce Runoff: Slow It Down, Spread It Out, Soak It In (includes the following videos)

- Reduce Runoff: Slow It Down, Spread It Out, Soak It In 9 Minutes
- RiverSmart Homes: Getting Smart about Runoff 12 Minutes
- Building Green: A Success Story in Philadelphia 11 Minutes
- After the Storm 22 Minutes
- DVD from North Central Texas Council of Governments Municipal Employee Training Series: Preventing Stormwater Pollution: What We Can Do (includes the following videos)
  - Introduction: What We Can Do
  - Construction Activities and Land Disturbances
  - Fleet Maintenance and Material Handling
  - Streets and Drainage Maintenance
  - Parks and Grounds Maintenance
  - Solid Waste Management

Attendance at the live events and completion of other training is recorded in each MS4's individual training logs (Part 2D).

### **Newsletters**

GVMC sent out seasonal MS4 Newsletters to communities to provide information regarding upcoming training, events, regulatory deadlines, committee meetings, and general program information during the reporting period.

City of Hudsonville  
Lower Grand River Watershed  
2017-2018 MS4 Progress Report

www.lgrow.org Fall 2017

# MS4 UPDATE

*Information for MS4 Permittees in the Lower Grand River Watershed*



Fish swimming over the 6th Street Dam in Sept. 2017

Newsletters such as this will periodically be sent to you. Since we are all a part of the Lower Grand River Watershed, it is important that everyone has current information, is up to date with regulatory requirements, and is aware of other activities happening in the watershed. This messaging also serves as a reminder for upcoming meetings and events, and offers MS4 training opportunities.

Leaves have begun to fall! Attached to this electronic newsletter, you will find an informational brochure about seasonal yard waste. Please post and/or distribute to your employees and community as you see fit. GVMC can print and customize this flyer for your community, just let us know what changes you would like to make.

---

**ON THE HORIZON**

Next summer, many Lower Grand River MS4's will need to complete dry-weather screening of their outfalls. The last time outfall screening occurred was in 2013 and 2014. GVMC will hire interns to complete IDEP testing. In Spring 2018, GVMC will give IDEP training and provide the materials needed to complete testing. In the coming months, please be thinking about any new outfalls, updates that need to be made to maps, problem or high-priority sites, and the amount of time it will take field personnel to complete your testing. More information will become available as testing time gets closer.

---

**2016-2017 PROGRESS REPORT UPDATE**

All MS4 Progress Reports were submitted to MDEQ by their October 1st due date. Please keep track of the trainings that you and your DPW staff complete during this reporting period. Note that the trainings listed in the progress report are examples and recommendations. MS4 training requirements may be met by other means; for example, information covered during staff meetings, flyers handed out, email blasts, or conferences attended throughout the year. Please make a note of these things as they happen in the 2017-2018 reporting period in order to meet training requirements. Thank you for your help and participation with the reporting process!

---

**STORMWATER TRAINING OPPORTUNITIES**

13th Annual MiCorps Conference and Training  
Nov. 8-9, 2017 in Tustin, MI

Ottawa County Water Quality Forum  
Nov. 30, 2017 in West Olive, MI

MWEA Watershed and Stormwater Seminar  
Dec. 5, 2017 in East Lansing, MI

More information on these trainings can be found here. Training DVDs are still available through GVMC. GVMC is looking to acquire more up-to-date training that is applicable to your municipality. If you have any ideas for MS4 materials to train CPW employees, please let us know.

---

**UPCOMING COMMITTEE MEETINGS @ GVMC**

Public Engagement Committee  
November 8, 2017 3-4 PM

Sustainability Committee  
December 4, 2017 1:30-2:30 PM

Technical Committee  
December 20, 2017 10:30 AM- 12 PM

2018 Meeting dates and times can be found here.

---

**MS4 COMMUNITIES**

If you have any stormwater information or events coming up in your community that you would like to share with other MS4s in the area, please let us know so we can get the word out! (Send an email to [caradecker@gvmc.org](mailto:caradecker@gvmc.org))



More MS4 information can be found on the LGROW website

www.lgrow.org Summer 2018

# MS4 UPDATE

*Information for MS4 Permittees in the Lower Grand River Watershed*





Thank you for attending the 15th Annual LGROW Spring Forum on May 11, 2018!

Attached to this electronic newsletter, you will find an informational brochure about ways to prevent pollution during the summer. There are also newsletter articles that highlight general watershed awareness. Please post and/or distribute to your employees and community as you see fit.

---

**MS4 PERMITS**

All communities have received their updated Stormwater Standards Manuals. These manuals outline design standards to comply with new Post Construction Controls under the Illicit Discharge Elimination Plan (IDEP). The last time outfall screening occurred was in 2013 and 2014. GVMC will let you know when we will be in your community to complete this work. Screening is weather dependent, so we appreciate your willingness to be flexible.

Timely review is necessary. Please work with Cara to get your comments incorporated into these documents. If you need extra explanation or desire further clarification, please do not hesitate to contact GVMC for help.

Once review is complete, the permit application will be submitted to MDEQ. While we are waiting for MDEQ's Permits Section to issue new MS4 permits, the LGROW Design Spreadsheet will be finalized in order to aid developers with compliance to the new permit requirements.

**IDEP OUTFALL SCREENING**

This summer, GVMC will be completing dry-weather screening of MS4 outfalls in accordance with the Illicit Discharge Elimination Plan (IDEP). The last time outfall screening occurred was in 2013 and 2014. GVMC will let you know when we will be in your community to complete this work. Screening is weather dependent, so we appreciate your willingness to be flexible.

GVMC provided IDEP training in May. Many thanks to those who attended- this will be documented in your annual progress report to MDEQ.

The training is available for you to share with those who were not able to attend. You can find the slides here: [www.lgrow.org/ms4information](http://www.lgrow.org/ms4information)

Please record the date and the names of DPW employees who view the training. We will report them to MDEQ in your progress report.


---

More information can be found on the LGROW website

www.lgrow.org Winter 2018

# MS4 UPDATE

*Information for MS4 Permittees in the Lower Grand River Watershed*



Snowmelt carrying nonpoint source pollution (salt) to storm drain with direct connection to the Grand River

Winter is still here! Attached to this electronic newsletter, you will find an informational brochure about ways to prevent pollution during the winter. There is also a newsletter article that highlights LGROW's illicit discharge reporting website. Please post and/or distribute to your employees and community as you see fit.

---

**MS4 PERMIT MEETING**

A full MS4 meeting will be held on Wednesday, March 14, 2018, from 1:30-3:30pm, at the City of Walker's Commission Chambers located at: 4243 Remembrance Rd NW, Walker, MI 49534.

GVMC will give updates to the permit application process and review new stormwater standards that your community will be responsible for implementing once the ordinance is adopted. This is an important meeting to have all municipal employees and elected officials attend in order to review and understand the new permit requirements before they go to MDEQ's permit section and your new permit is issued. Please make every effort to attend and invite engineers, planners, supervisors, and other employees from your community who will have responsibility in implementing these new standards.

**2017 PUBLIC EDUCATION PLAN FOCUS GROUP**

A focus group was held on December 18, 2017 at GVMC with the purpose to determine changes in the awareness, education, and behavior of the public as a result of stormwater education efforts since 2009. This focus group ended up being a very educational experience for its participants, while providing valuable feedback on LGROW outreach activities. The mixed demographic of participants and the number of MS4 communities participating provided a fairly diverse view of LGROW's reach into the watershed, and participants shared many ideas to improve LGROW messaging. We plan on using recommendations from this focus group to update the MS4 Public Education Plan, and provide more effective stormwater messaging throughout the watershed. The complete report can be found at: [www.lgrow.org/ms4information](http://www.lgrow.org/ms4information)

---

More information can be found on the LGROW website



## Monitoring

The Grand River Water Quality Index (WQI) is used to show the trend of Grand River water quality downstream of Grand Rapids. A WQI of 71-90 indicates good water quality with high diversity of aquatic life and very few limits for recreational use. Grand Rapids has been monitoring the Grand River for forty years and all of the data are available upon request. A record of the WQI for Wealthy Street Bridge is provided as an example of improving water quality in the Grand River. An interactive map and data from sampling events can be viewed as follows:

[https://grandrapids.maps.arcgis.com/apps/Embed/index.html?webmap=b58bd9f6cda949599b15753b888a7048&extent=-85.8676,42.8116,-85.4244,43.0326&zoom=true&scale=true&search=true&searchextent=false&legend=true&disable\\_scroll=false&theme=light](https://grandrapids.maps.arcgis.com/apps/Embed/index.html?webmap=b58bd9f6cda949599b15753b888a7048&extent=-85.8676,42.8116,-85.4244,43.0326&zoom=true&scale=true&search=true&searchextent=false&legend=true&disable_scroll=false&theme=light)

## Water Quality Index Grand River and Tributary Sampling Sites

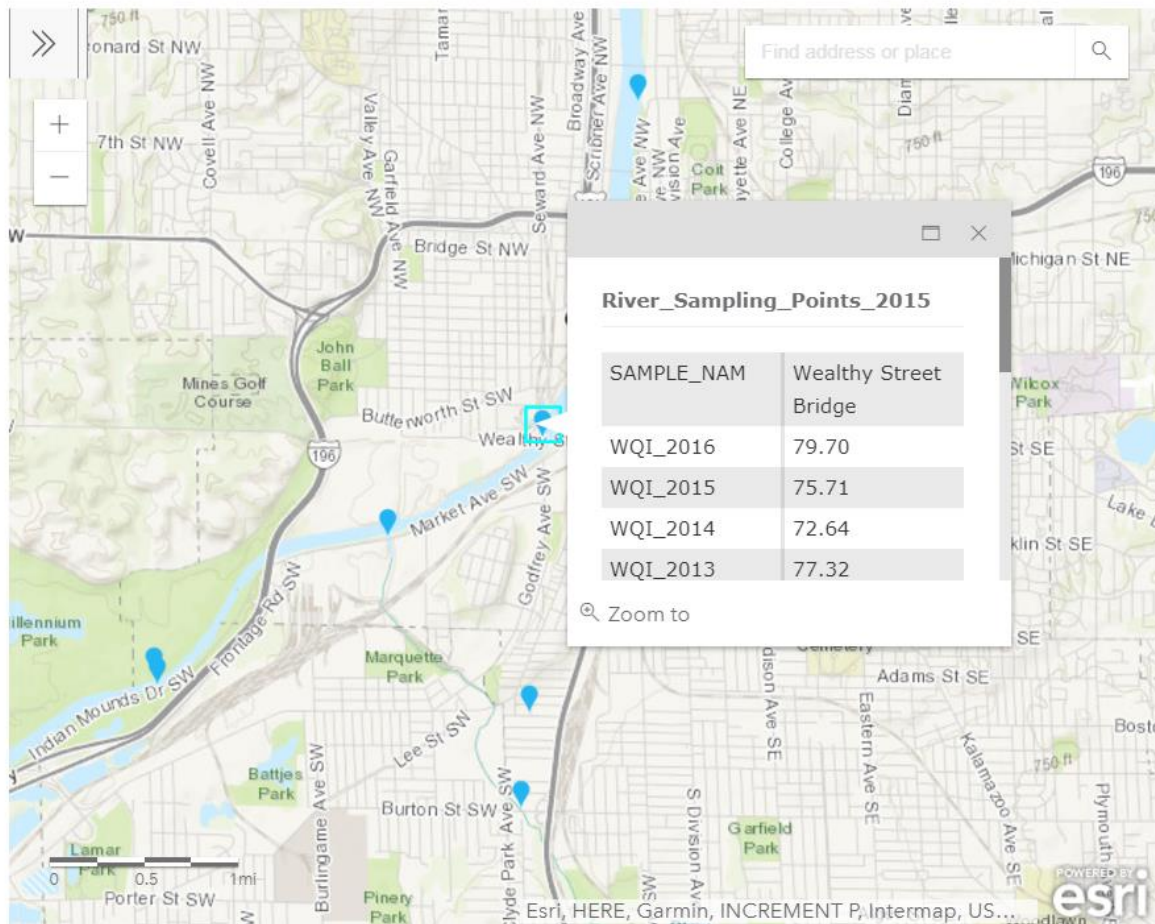


Figure 1 Grand Rapids Water Quality Index Web Interface

## Data Repository

The LGROW Technical Committee continued working on the design for a watershed-wide data repository with the help of GVMC's Regional Geographic Information System (REGIS) department. Using data collected by the Friends of Buck Creek as part of their 319 monitoring grant, and Indian Mill Creek, as part of GVSU Graduate Students' research, the committee designed a landing page, which provides access to the collected data via an Arc GIS online interface – a free online GIS software that allows users basic viewing and searching capabilities. The group also designed a tutorial for data repository users. The long-term goal is that the data repository will be a central location to access water quality data from sampling events in the Lower Grand River Watershed. With this goal in mind, the Technical Committee also developed submittal tools to allow users to share collected scientific water quality data. The data will be reviewed and checked by LGROW before it is uploaded into the data repository for public viewing at this site: <https://www.lgrow.org/data-repository/>. Some students and teachers in local school districts have already begun to use the repository to aid classroom learning.

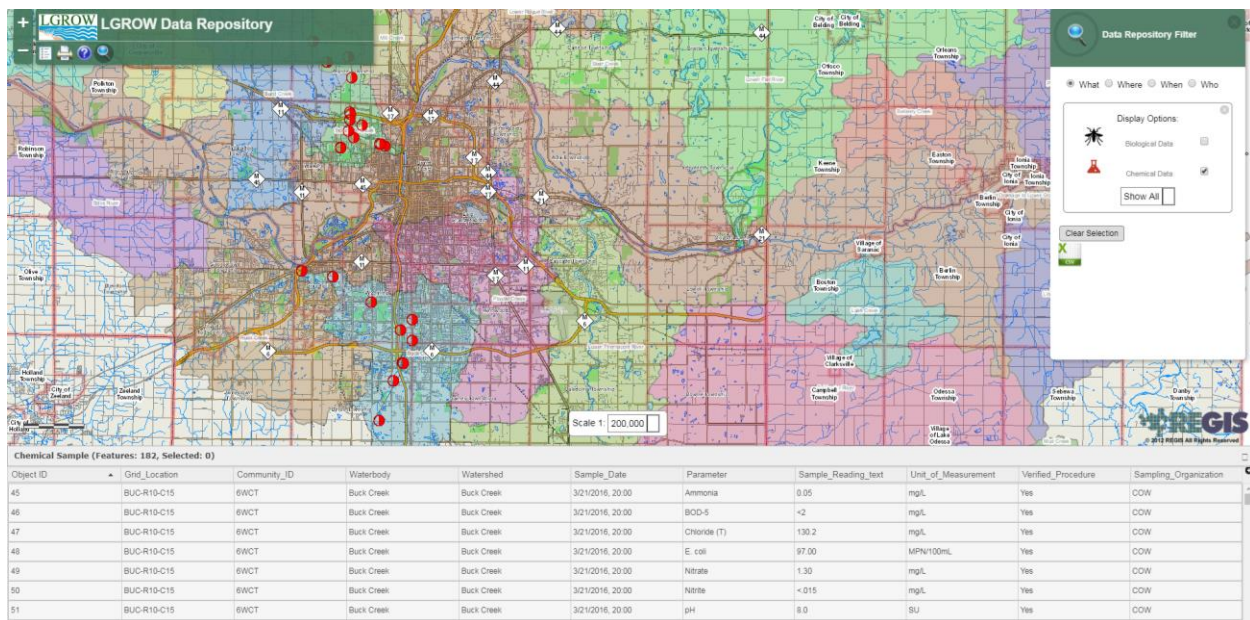


Figure 2 LGROW Data Repository

**MDEQ Program Audits**

GVMC assists communities in preparing for audits, and in addressing any deficiencies identified by MDEQ. During this reporting period, MDEQ performed audits on site for the following communities in the Lower Grand River Watershed:

City of Wyoming, August 29, 2017

City of Grandville, January 18, 2018

Kent County Road Commission, January 24, 2018

Supplemental documentation for these audits will be included in this report for each of the communities listed above. All communities that were audited during this reporting period were found to be in compliance and are implementing effective MS4 programs.

## **Part 2A - Lower Grand River Watershed Management Plan Prioritized Objectives**

### **Encouraging proper septic tank maintenance**

Each year a portion of the public education materials distributed address proper septic tank maintenance. Detailed information regarding the nature of these materials is included in Part 3 - PEP of this progress report. Additionally, communities in both Kent and Ottawa Counties work collaboratively with their respective Health Departments to report and ensure correction of failing or failed septic systems. Individual communities track this data in Part 4 – IDEP of this progress report.

The US EPA hosts SepticSmart Week once a year, and LGROW uses the materials provided to encourage of proper septic system care. SepticSmart Week 2017 was held on September 18-22, and focused on educating homeowners and communities on the proper care and maintenance of their septic systems.

### **Encouraging septage ordinance**

The Ottawa County Health Department presently has an ordinance in place requiring point of sale inspections. The permitted communities located within Ottawa County collaborate with and rely on the Ottawa County Health Department for ongoing enforcement of the ordinance.

Kent and Muskegon Counties have not passed an ordinance requiring point of sale septic system inspections. The permitted entities within Kent and Muskegon County rely on implementation of the IDEP and reporting/enforcement through their stormwater ordinances and the Health Department to follow up on failing or failed septic systems. In the case of a failed septic system, a connection to sanitary is typically required if a sanitary sewer connection is available within 250 feet.

### **Implement vegetative buffering practices and restore and protect the stream buffer and canopy**

Several communities including the City of East Grand Rapids and the City of Grand Rapids have instituted or evaluated the potential for buffer ordinances. The Cities of Hudsonville and Rockford have included buffer provisions within their zoning ordinances. Many other communities have adopted mowing buffer procedures on the properties they own and maintain. These procedures are identified in Part 2C.

### **Implement Michigan Department of Natural Resources wildlife population management practices**



Three communities are working with the Michigan Department of Natural Resources on supervised programs to control populations of Canada Geese. These programs include Egg Destruction (East Grand Rapids and Kent County Drain Commissioner), Goose Relocation (Kent County Drain Commissioner), Nest Destruction (Kent County Drain Commissioner), and Targeted Goose hunts for population reduction (Plainfield Charter Township). Communities throughout the watershed are utilizing signage to discourage the feeding of waterfowl, actively installing goose deterrents, and/or instituting procedures for a no-mow buffer adjacent to streams and ponds to function as a natural deterrent. The City of Hudsonville has provided a portal on their website for residents to report nuisance wildlife.

### **Implement sanitary sewer maintenance practices**

Sanitary sewer service is provided by several communities to residents in expanded service areas. Through these partnerships, many communities are able to utilize sanitary sewer infrastructure instead of relying on septic fields. The City of Grand Rapids collaborates with Cascade Charter Township, the City of East Grand Rapids, Forest Hills Public Schools, Grand Rapids Charter Township, Kent County, Kentwood, and the City of Walker. The City of Wyoming collaborates with the City of Kentwood and portions of the City of Grandville. The City of Grandville collaborates with the City of Hudsonville and portions of Georgetown Charter Township. The City of Grand Haven collaborates with the City of Ferrysburg and the Village of Spring Lake. The North Kent Sewer Authority collaborates with Plainfield Charter Township and the City of Rockford. All of the MS4 LGROW community members have procedures to inspect and maintain their sanitary sewer systems, which are independent of their MS4 systems. Information related to the maintenance and upgrades of sewer infrastructure is included in Part 2B of the report.

### **Implement Low Impact Development Practices**

Low Impact Development (LID) and Green Infrastructure (GI) are critical components in both the SWPPI and the PEP. Detailed information on the training related to LID practices and implementation is detailed in Part 2D. Tracking of the installation and consideration of LID practices by Permittees is tracked in Part 2E. The PEP incorporates messages on the implementation of LID practices such as rain gardens, buffer strips, and native plantings for their direct benefits to water quality. The PEP focuses on LID practices that are feasible for individual homeowners to implement, rather than large scale development.

### **Implement watershed focused land-use planning**

Throughout the watershed, construction in FEMA mapped floodplains is regulated by the Michigan Building Code to ensure that construction below the base flood elevation does not occur. This is accomplished by providing prescribed release rates for Bank Erosion Control, as well as Flood Control.

Water Quality control is addressed with detention and infiltration, where possible, or delayed and restricted release where it is not.

As the Stormwater Ordinance Committee worked on developing the model stormwater ordinance for the next MS4 permit, many of the design requirements needed to prevent or mitigate flooding in site designs were left intact. Though these were not required as part of the MS4 permit application, permitted communities recognize the need for flood protection for the protection of downstream residences and receiving waters.

### **Implement proper soil erosion and sedimentation control techniques**

Part 91, Soil Erosion and Sedimentation Control (SESC), of the Natural Resources and Environmental Protection Act (NREPA), 1994 PA 451, as amended, regulates the activity of earth work and mandates that projects disturbing an area greater than one acre in size or an area less than 500 feet from a lake or stream obtain a soil erosion permit from the regulatory agency with jurisdiction over the area in which they are working. Table 2 details which Permittees work collaboratively with the county enforcing agent (CEA), which Permittees administer their own program as a municipal enforcing agent (MEA), and which Permittees have the authority to oversee their own projects as authorized public agencies (APA). MEA, CEA, and APA programs implement a thorough soil erosion and sediment control plan review and regular site inspections in their programs for permitted sites. Plan review and site inspections are conducted by staff with either a comprehensive or inspector construction site stormwater operator certification respectively.

Training on topics related to construction site stormwater runoff is detailed in Part 2D. Training ensures that even if a community does not oversee their own program, field staff will be informed regarding observations on a construction site and the appropriate entity to report to if there is an offsite discharge or poorly maintained SESC measures. Many LGRW MS4 permitted communities who administer a Part 91 program also work closely with the West Michigan Soil Erosion Control Network, a professional network that provides regular training, panel discussions and field demonstrations on BMPs and new technologies in this field.

Community	Part 91 Contact Info		MEA	Utilizes CEA			APA
	Name	Phone		Kent	Muskegon	Ottawa	
Cascade Charter Township	KCRC	616-242-6914		X			
East Grand Rapids, City of	KCRC	616-242-6914		X			
Ferrysburg, City of	OCWRC	616-994-4530				X	
Forest Hills Public Schools	KCRC	616-242-6914		X			
Fruitport, Village of	Muskegon County DPW	231-724-6411			X		
Georgetown Charter Township	OCWRC	616-994-4530				X	
Grand Haven, City of	OCWRC	616-994-4530				X	
Grand Rapids Charter Township	KCRC	616-242-6914		X			
Grand Rapids, City of	Environmental Services Dept.	616-456-3057	X				X
Grandville, City of	KCRC	616-242-6914		X			
Hudsonville, City of	OCWRC	616-994-4530				X	
Kent County Drain Commissioner & Administration	Deputy Drain Commissioner	616-336-3688					X
Kent County DPW	Kent Co. DPW	616-336-3694					X
<b>Kent County Road Commission (Kent County CEA)</b>	KCRC	616-242-6914		X			X
Kentwood, City of	Engineering Dept.	616-554-0737	X				X
<b>Ottawa County Water Resources Commissioner &amp; Administration (Ottawa County CEA)</b>	OCWRC	616-994-4530				X	X
Ottawa County Road Commission	Engineering Dept.	616-842-5400					X
Plainfield Charter Township	KCRC	616-242-6914		X			
Rockford, City of	Public Services Dept.	616-866-9631	X				
Sparta, Village of	KCRC	616-242-6914		X			
Spring Lake, Village of	OCWRC	616-994-4530				X	
Walker, City of	Engineering Dept.	616-453-6311	X				
Wyoming, City of	KCRC	616-242-6914		X			

### **Implement channel and stream bank stabilization, bio-engineering and erosion control techniques**

The MDEQ requires a joint permit from the state of Michigan for all work performed in channels that are designated as waters of the state. Any work that occurs within 500 feet of a lake or stream requires a soil erosion control permit from the authorized Part 91 agency, as referenced above. These permitting procedures work in tandem to prevent negative impacts during and after construction, as well as to ensure adequate restoration. Permitted communities in the Lower Grand River Watershed have policies in place to ensure protection of drainage systems from construction site runoff as detailed in Part 2C and perform regular training as referenced in Part 2D related to construction site stormwater runoff and water quality protection.

### **Implement turf management and proper fertilizer application practices**

Permitted communities within the Lower Grand River Watershed have developed procedures for managing vegetation and using fertilizers on Permittee owned properties as outlined in Part 2C. These policies and procedures were reviewed as permittees prepared their individual permit applications in Spring 2015. All staff at the communities and their subcontractors adhere to these procedures. Training is also provided in the form of the brochure, "What Every Landscaper Must Know". This brochure is distributed as part of the comprehensive training plan on controls to reduce the discharge of pesticides, herbicides, and fertilizers, as described in Part 2D. The brochure was updated in 2014 to allow for permitted MS4s to customize it for distribution to their staff and contractors as well as local landscaping businesses.

**Part 2B - Stormwater Controls Inspection, Maintenance and Effectiveness  
 August 1, 2017 to July 31, 2018**

<b>BMPs on Multiple Municipal Properties</b>				
<b>Structural Storm Water Control</b>	<b>Inspection Frequency</b>	<b>Maintenance Schedule</b>	<b>Inspection and Maintenance Conducted and Location of Log (if applicable)</b>	<b>Effectiveness of Control and Support Documentation</b>
Curbs/Gutters	1 X per year	As needed	Street Sweeping is done City wide at least one time per year	Disposed on 5-18-18 (38.78 tons) 10-16-17 (26.91 ton) 11-22-17 (31.05 ton) and 12-18-17 (leaf cleanup from streets)
Storm Sewers	1 X per year	As needed	1 Quadrant is scheduled for cleaning each year	
Catch Basins	1 X per year	As needed	1 Quadrant is scheduled for cleaning each year	
Detention/Retention Ponds	1 X per year	Every other year	1 Retention pond, inspected quarterly	No issues were found
Vegetated Swales	1 X per year	As needed	N/A	N/A
Vegetative Buffer Strip	1 X per year	As needed	N/A	N/A
<b>Municipal Property Common Name and Property Type</b>				
<i><b>3500 Kelly St – Cherry Ave Parking Lot</b></i>				
<b>Structural Storm Water Control</b>	<b>Inspection Frequency</b>	<b>Maintenance Schedule</b>	<b>Inspection and Maintenance Conducted and Location of Log (if applicable)</b>	<b>Effectiveness of Control and Support Documentation</b>
Curb, gutter, catch basins, storm sewers	1 X per year	As needed	June 2018	Plummers Environmental

<b>BMPs on Multiple Municipal Properties</b>				
<b>Municipal Property Common Name and Property Type</b>				
<i><b>3338 VanBuren St – Gary Byker Memorial Library</b></i>				
<b>Structural Storm Water Control</b>	<b>Inspection Frequency</b>	<b>Maintenance Schedule</b>	<b>Inspection and Maintenance Conducted and Location of Log (if applicable)</b>	<b>Effectiveness of Control and Support Documentation</b>
Curb, gutter, catch basins, storm sewers	1 X per year	As needed	June 2018	Plumbers Environmental
<b>Municipal Property Common Name and Property Type</b>				
<i><b>3275 Central Blvd – Hudsonville City Hall</b></i>				
<b>Structural Storm Water Control</b>	<b>Inspection Frequency</b>	<b>Maintenance Schedule</b>	<b>Inspection and Maintenance Conducted and Location of Log (if applicable)</b>	<b>Effectiveness of Control and Support Documentation</b>
Detention Pond	1 X per year	Every Other Year	Dry	No inspection needed
<b>Municipal Property Common Name and Property Type</b>				
<i><b>5713 Balsam Dr – Hudsonville DPW Building</b></i>				
<b>Structural Storm Water Control</b>	<b>Inspection Frequency</b>	<b>Maintenance Schedule</b>	<b>Inspection and Maintenance Conducted and Location of Log (if applicable)</b>	<b>Effectiveness of Control and Support Documentation</b>

<b>BMPs on Multiple Municipal Properties</b>				
Curb, gutter, catch basins, storm sewers	1 X per year	As needed	June 2018	Plummers Environmental
<b>Municipal Property Common Name and Property Type</b>				
<i>Local Streets with Gravel Shoulders</i>				
Structural Storm Water Control	Inspection Frequency	Maintenance Schedule	Inspection and Maintenance Conducted and Location of Log (if applicable)	Effectiveness of Control and Support Documentation
Curb, gutter, catch basins, storm sewers	1 X per year	As needed	1 Quadrant is scheduled for cleaning each year	
<b>Municipal Property Common Name and Property Type</b>				
<i>Local Streets with Curb and Gutter</i>				
Structural Storm Water Control	Inspection Frequency	Maintenance Schedule	Inspection and Maintenance Conducted and Location of Log (if applicable)	Effectiveness of Control and Support Documentation
Curb, gutter, catch basins, storm sewers	1 X per year	As needed	June 2018	Plummers Environmental
<b>Municipal Property Common Name and Property Type</b>				
<i>Major Streets</i>				
Structural Storm Water Control	Inspection Frequency	Maintenance Schedule	Inspection and Maintenance Conducted and Location of Log (if applicable)	Effectiveness of Control and Support Documentation
Curb, gutter, catch basins, storm	1 X per year	As needed	1 Quadrant scheduled for	

<b>BMPs on Multiple Municipal Properties</b>				
sewers			cleaning each year	
<b>Municipal Property Common Name and Property Type</b>				
<i><b>4674 HillSide Dr – Hillside Park</b></i>				
<b>Structural Storm Water Control</b>	<b>Inspection Frequency</b>	<b>Maintenance Schedule</b>	<b>Inspection and Maintenance Conducted and Location of Log (if applicable)</b>	<b>Effectiveness of Control and Support Documentation</b>
Curb, gutter, catch basins, storm sewers	1 X per year	As needed	June 2018	Plummers Environmental
<b>Municipal Property Common Name and Property Type</b>				
<i><b>5578 School St – Hudsonville Cultural Center</b></i>				
<b>Structural Storm Water Control</b>	<b>Inspection Frequency</b>	<b>Maintenance Schedule</b>	<b>Inspection and Maintenance Conducted and Location of Log (if applicable)</b>	<b>Effectiveness of Control and Support Documentation</b>
Curb, gutter, catch basins, storm sewers	1 X per year	As needed	June 2018	Plummers Environmental
<b>Municipal Property Common Name and Property Type</b>				
<i><b>2800 New Holland St – Nature Center</b></i>				
<b>Structural Storm Water Control</b>	<b>Inspection Frequency</b>	<b>Maintenance Schedule</b>	<b>Inspection and Maintenance Conducted and Location of Log (if applicable)</b>	<b>Effectiveness of Control and Support Documentation</b>
Curb, gutter, catch basins, storm sewers	1 X per year	As needed	June 2018	Plummers Environmental



**Part 2C - Procedures Status  
 August 1, 2017 to July 31, 2018**

The following procedures were adopted in by Patrick B. Waterman, City Manager of the City of Hudsonville, who serves as the City's Chief Administrative Officer. Dates of revised procedures are listed and revisions attached.

<b>Procedure</b>	<b>Date Adopted</b>	<b>Date Revised (if needed)</b>
Procedure to Ensure Protection of Drainage Systems from Construction-Site Runoff	August 16, 2010	N/A
Procedure to Dispose of Storm Sewer System Operation and Maintenance Waste	August 16, 2010	N/A
Procedures to Construct, Operate, and Maintain Streets, Roads, Highways, and Parking Lots	August 16, 2010	N/A
Procedure to Reduce Runoff of Total Suspended Solids (TSS)	August 16, 2010	N/A
Procedure to Prevent Salt and Sand from Entering Receiving Streams	August 16, 2010	N/A
Procedure to Control Dust and TSS in Runoff	August 16, 2010	N/A
Procedure for Managing Vegetation on Municipal Properties	August 16, 2010	N/A
Procedure for Using Fertilizers on Municipal Properties	August 16, 2010	N/A

**Part 2D - Staff and Contractors Training on Pollution Prevention and Good Housekeeping**

<b>Training Topic Area</b>	<b>Employee Group to Receive Training</b>	<b>Training Frequency</b>	<b>Potential Training Type</b>
<b>Required Topics</b>			
Maintenance activities, maintenance schedules, and inspection procedures	Public Work Employees	One Time	<b>Written O&amp;M Procedures</b>
<b>Training completed:</b>			
Controls on streets, parking lots, maintenance garages, and storage yards	Public Works Employees Police Department City Hall Employees	One Time One Time One Time	<b>Storm Watch - Municipal Storm Water Pollution Prevention - DVD from Excal Visual, LLC</b>  <b>Spills &amp; Skills - Non-Emergency HazMat Spill Response - DVD from Excal Visual, LLC</b>  <b>MDEQ Storm Water Employee Training</b>
<b>Training completed:</b>			
Disposal of O&M waste	Public Works Employees	One Time or as they change	<b>Regulatory Requirements for Waste Disposal – Live Presentation</b>
<b>Training completed:</b>			
Water quality protection in flood control projects (detention basins, dams)	Public Works Employees	One Time	<b>Retrofitting Detention Ponds for Water Quality – Live Presentation</b>
<b>Training completed:</b>			

<b>Training Topic Area</b>	<b>Employee Group to Receive Training</b>	<b>Training Frequency</b>	<b>Potential Training Type</b>
Controls to reduce discharge of pesticides, herbicides, and fertilizers	Contractual Employees	At time of contract signing and annually for contracts that span multiple years.	<b>LGRW_LandscapingContractorTrainingBrochure_2011-08-01.pub</b>
<b>Training completed:</b>			
<b>Other Topics</b>			
Construction site stormwater runoff	Public Works Employees  Contractual Employees	One Time  At the time of contract signing and annually for contracts that span multiple years.	<b>Ground Control - Storm Water Pollution Prevention for Construction Sites - DVD from Excal Visual, LLC</b> <b>LGRW_ContractorTrainingBrochure_2011-09-16.pub</b>
<b>Training completed:</b>			
Gravel Road Maintenance	N/A – the City of Hudsonville does not have gravel roads.		<b>Keep An Eye On It! - Environmental Awareness for Gravel Road Maintenance - DVD from SEMCOG &amp; Road Commission for Oakland County</b>
<b>Training completed:</b>			

<b>Training Topic Area</b>	<b>Employee Group to Receive Training</b>	<b>Training Frequency</b>	<b>Potential Training Type</b>
LID	Public Works Employees City Hall Employees	One Time One Time	<b>Reduce Runoff: Slow It Down, Spread It Out, Soak It In - DVD from USEPA</b> <b>RiverSmart Homes: Getting Smart about Runoff - DVD from USEPA</b> <b>Building Green: A Success Story in Philadelphia - DVD from USEPA</b> <b>After the Storm - DVD from USEPA</b> <b>BMP Tour of GVSU Campuses – Walking Tour</b>
<b>Training completed:</b>			
IDEP	All Employees	Annually in their paychecks	<b>WaterPollutionReportForm.doc</b> <b>Article_City_Employees.doc</b>
<b>Training completed:</b>			
General Storm Water Education	Municipal officials	One Time as new officials take office.	<b>“Back to Basics” Storm Water Training – Live Presentations</b>
<b>Training completed:</b>			

## **Part 2E - Post Construction Controls Activities**

**August 1, 2017 to July 31, 2018**

### **Appendix 2E –**

### **Post Construction Controls Activities Completed**

**August 1, 2017 to July 31, 2018**

The City of Hudsonville has adopted the Kent County Model Storm Water Ordinance for Storm Water Controls with some minor adjustments to fit our community.

#### **ARTICLE IV. STORMWATER CONTROL**

**\*Editor's note:** Ordinance No. 04-249, adopted 12-14-04, amended Art. IV in its entirety to read as herein setout. Former Art. IV pertained to similar subject matter and derived from Ord. No. 92, Arts. I--XI, adopted 7-13-82.

**Cross references:** Plumbing code, § 6-51 et seq.; drainage improvements and subdivisions, § 21-42.

The City requires specific practices for water quality and stream protection as follows:

#### **Sec. 23-142. Stormwater discharge rates and volumes.**

The city shall utilize the drain commissioner's minimum design standards for stormwater discharge release rates. However, if the city commission makes a specific finding that the drain commissioner's standards are insufficient, the city may establish minimum design standards for stormwater discharge release rates and require dischargers to implement on-site retention, detention or other methods necessary to control the rate and volume of surface water runoff discharged into a stormwater drainage system.

As described in Section 8 of the Ordinance, the City requires Low Impact Development practices through its storm water management standards at sites of new development and significant redevelopment if located in Zone A of the Township.

The Storm Water Ordinance includes regulations that adhere to the Floodplain Ordinance and the Soil Erosion and Sedimentation Control program of the City. When a site plan approval is requested, we require the following pieces of information in relation to Storm Water Controls found in our Zoning Ordinance as referenced:

##### **15-9.B.9**

The description of measures to be taken to control soil erosion and sedimentation during and after completion of grading and construction operations. This description shall include the location of proposed retaining walls, dimension and materials of same, fill materials, typical vertical sections, and plans for restoration of adjacent properties, where applicable;

##### **15-9.B.11**

The location and elevations of existing water courses and water bodies, including county drains, and manmade surface drainage ways, 100-year floodplains, and all wetlands;

##### **15-13.C**

*Standards for Site Plan Review Regarding Drainage provisions.* Special attention shall be given to proper site drainage so that removal of storm waters will not adversely affect neighboring properties or overload watercourses in the area.

The City of Hudsonville's current Storm Water Ordinance (Chapter 23, IV, sections 110-203) requires a developer to provide the City with a "Maintenance Plan" that addresses long term maintenance on the drain or retention/detention pond. This Maintenance Plan must address who is responsible for the maintenance, what kind of maintenance will be required and how often. The engineers then determine if the Maintenance Plan is adequate and either approve or approve with corrections at the site plan approval phase.

**Explain the enforcement activities of your comprehensive storm water management program for post-construction controls completed during this reporting period:**

City employees and citizens of Hudsonville can file concerns with the Department of Public Works or the Planning and Zoning Department. All concerns filed are handed over to the Planning/Zoning Department and a field inspection is done. If further enforcement is needed a letter and appropriate actions are taken.

When a new area is being developed it is inspected initially by the Planning/Zoning Department to insure it in is compliance with ordinances.

**How many developments were approved with storm water controls according to PCC?**

2 – Site Plans were submitted for review that were required to have storm water controls approved.

**Have any long-term operation and maintenance agreements been signed?**

2 - All private properties are responsible for the stormwater maintenance and operations. Sec 23-140. – Management of and responsibility for stormwater system. "The City is not responsible for providing drainage facilities on private property for the management of stormwater on said property. It shall be the responsibility of the property owner to provide for, and maintain, private stormwater runoff facilities serving the property and to prevent or correct the accumulation of debris that interferes with the drainage function of a water body."

**How many inspections or enforcement/compliance of O&M agreements were conducted?**

Field visits were completed for each site, no enforcement was needed.

**Explain how the Post Construction Controls have addressed other issues, such as protecting sensitive areas, directing growth to identified areas, encouraging infill development in higher density urban areas and areas with existing infrastructure, and/or maintaining or increase open spaces:**

City of Hudsonville is all Zone B

## Part 3 - PEP

### Regional PEP

The updated Public Education Plan (PEP) was approved by MDEQ in February 2013. The purpose of the PEP is to promote, publicize, and facilitate education for the purpose of encouraging the public to reduce the discharge of pollutants in stormwater to the maximum extent practicable. This section provides a report of public education activities implemented between August 1, 2017, and July 31, 2018.

### Public Engagement Committee

LGRW Public Engagement Committee was formed in 1999 to begin development and implementation of the PEP. Since that time the committee has met on a regular basis to discuss and plan activities scheduled for implementation in the PEP and the LGR Watershed Management Plan. In addition to MS4 communities, the 2017-2018 Public Engagement Committee consisted of the following community partners:

<b>Table 3. Non-MS4 Partner Organizations</b>	
<b>Agency</b>	<b>Representative</b>
MDEQ	Amanda St. Amour
GVMC – West Michigan Clean Air Coalition	Andrea Faber
Ottawa Co. Conservation District	Benjamin Jordan
Boy Scouts of America	Bridget Knight
GVMC	Eileen Boekestein
Trout Unlimited	Jamie Vaughan
Groundswell, GVSU	Joanna Allerhand
Groundswell, GVSU	KyMBERly Pawelka
Kent County Resource Recovery	Megan Kretz
MDEQ	Michelle Storey
WMEAC	Jessica VanderArk
WMEAC	Kyle Hart
GVMC/GVSU	Carlos Calderon
The Right Place	Rick Chapla
GVMC	Rachel Frantz
Grand Rapids Public Museum	Stephanie Ogren
Grand Rapids Public Museum	Erin Koren
GVMC	Wendy Ogilvie
Kent County Health Department	Brendan Earl
Kent Conservation District	Jessie Schulte
Citizen Labs	Allen Clark
GVMC	Cara Decker

During this reporting period, the Committee reorganized to set priority topics and create a functional meeting schedule. Instead of holding meetings once every two months, the committee meets in January, February and May. During the summer months, meetings are not held because communities are busy attending and hosting outreach events. The group reconvenes in September to review their summer activities, and begin to plan for the next year. Meetings are then held in October and November. Goals for each meeting are as follows:

January: Distribute PEP materials and discuss distribution

February: Pick up orders, Plan for the year's events

May: Ongoing business, Committee updates

September: Review event year, Ongoing business

October: Ongoing business, Discuss changes for next year

November: Finalize orders for next year

During the October Committee meeting, the group chooses which PEP topics to focus on for the next year. Information regarding all topics covered in the PEP may be discussed and promoted by communities throughout the year, as described in detail in the remainder of this section of the report. The committee decided that if more energy is focused on a few key topics each year, then education regarding those specific topics can be thoroughly explored. Educational materials and give-aways are then designed around the key topics. While each year focuses on a particular set of topics, all six education categories will still be addressed in detail at least once during each reporting period.

Additional information regarding the Public Education Committee is available at: <https://www.lgrow.org/ms4information>. Materials, training opportunities, and other resources are available via this webpage.

## **PEP Implementation**

This section describes the public education activities implemented by the Permittees from August 1, 2017 through July 31, 2018. The following report describes activities which meet the requirements of the 2013 approved PEP. Target audiences, messages, and delivery mechanisms are described for each Public Education Topic.

### Public Education Topic 1 - Personal Watershed Stewardship

*PEP Objective 1*: Educate the public about their responsibility and stewardship in their watershed.

*Target Audience*: Residents, visitors, and public employees

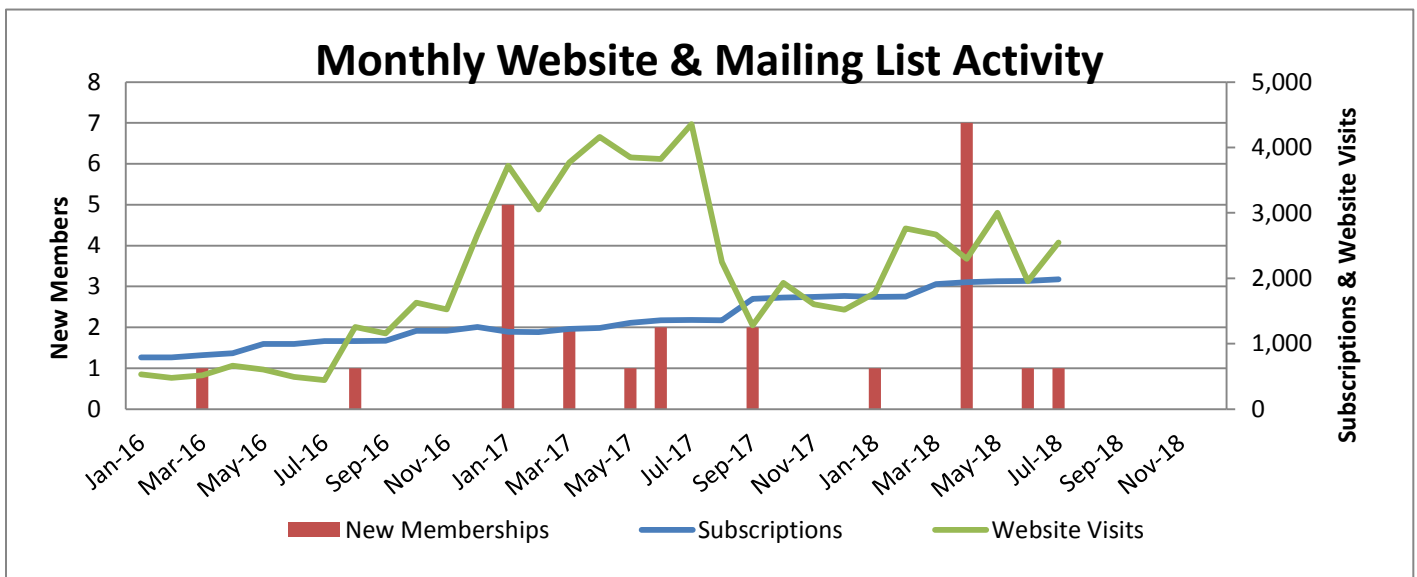


*Content of Message:* 1) A watershed is an area of land draining to a common point. You live in the LGRW, you impact the watershed. 2) Learn more about the LGROW by visiting LGROW.org. 3) Reasons for protecting the watershed. 4) Ways individual can affect the watershed through their activities.

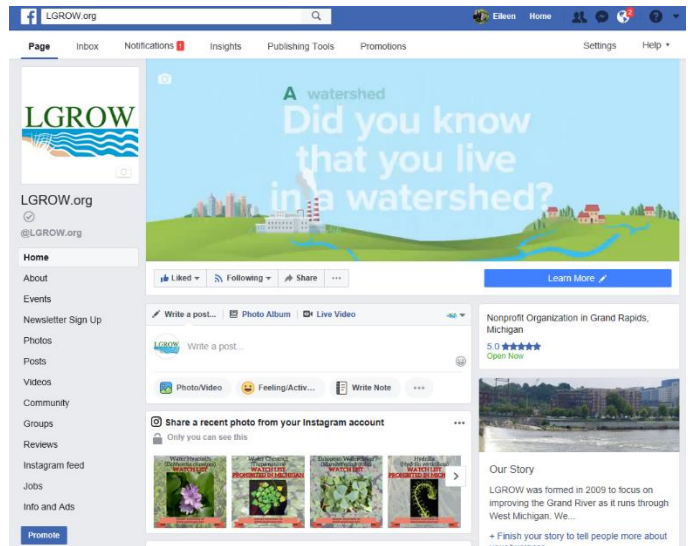
*Delivery Method:*

- Permittees' websites link to LGROW's website, [www.lgrow.org](http://www.lgrow.org). The watershed website provides information on non-point source (NPS) pollution, local watershed issues, water science education, and watershed management. A major website update was launched at the beginning of the 2017-2018 reporting period and was accessed by an average of 758 unique visitors each month. The website logged 9,090 unique visitors over the entire reporting period.
- LGROW also sends out a seasonal email newsletter with information about the watershed, upcoming educational events, and stormwater educational articles. Newsletter subscriptions and website traffic by month are displayed in Figure 3.

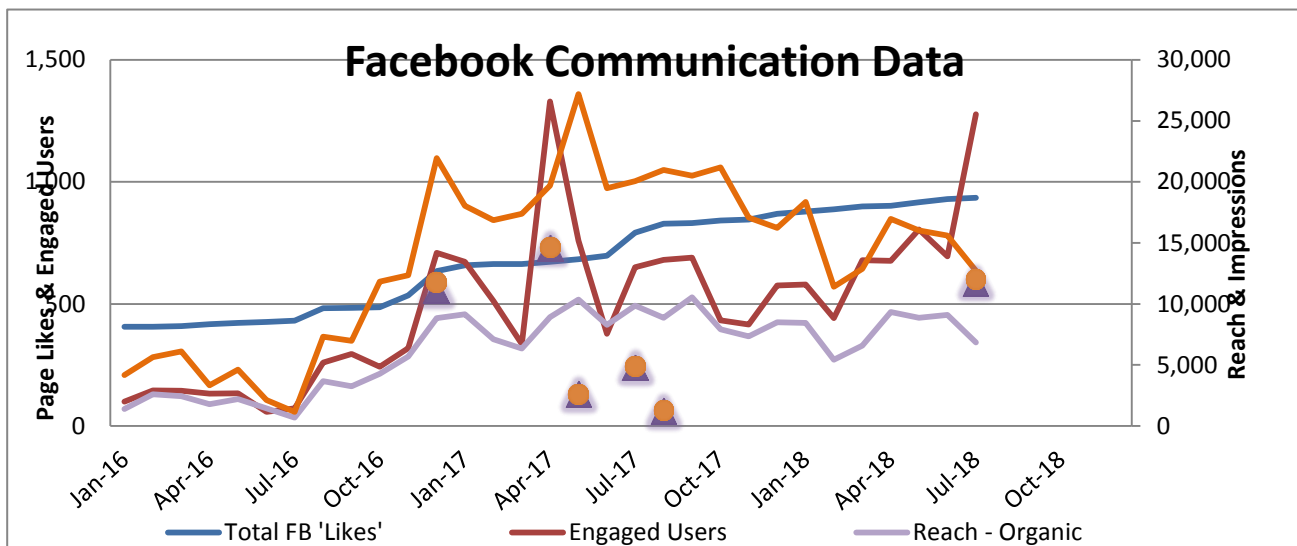
**Figure 3. Page Visits to LGROW.org by Month**



- LGROW worked to promote participation through its Facebook page with a regular posting schedule including watershed project highlights, upcoming events, and volunteer opportunities. Throughout the reporting period, LGROW Facebook posts have reached 107,622 people. As of the end of the reporting period, the Facebook page reached 935 Likes (this number has increased from the last reporting period). Facebook user engagement has shown consistent growth over the reporting period with the average number of Likes, Shares, and Comments. LGROW promoted its Facebook page three times during the reporting period using paid promotions, which increased its audience significantly. Facebook activity is displayed by month in Figure 4.



**Figure 4 Facebook Communication Data by Month**



- Permittees distributed LGROW, stormwater, and watershed education materials listed below to residents in the LGRW at multiple events, and venues. Materials were distributed according to

City of Hudsonville  
Lower Grand River Watershed  
2017-2018 MS4 Progress Report

the type of event and the target audiences in attendance. Listed below are the number and type of educational materials ordered by permittees to distribute throughout the reporting period:

- 2000 LGROW Lip Balms
- 1500 "Report Illicit Discharge" fridge magnets
- 1000 Rainbow Trout "Only rain in the drain" stress balls
- 1500 "Keep your Lakes Great and your River Grand" dry bags
- 700 "Keep your Lakes Great and your River Grand" magic scarves
- 1200 "Report Illicit Discharge" coasters
- 500 Car Wash pledges and shammies
- 500 Pet Waste pledges and dispensers
- 1000 Paint by number Watershed Maps

Other public education materials ordered during previous permit cycles were also distributed by permittees, including:

- Keep Your Lakes Great and Your Rivers Grand Magnets
- Keep Your Lakes Great and Your Rivers Grand vinyl stickers
- Watershed Temporary Tattoos
- Troutie Coloring Books
- Reusable Water Bottles
- Reusable Tote Bags
- LGROW Brochures
- Landscaping for Water Quality booklets
- LGROW Gardening Gloves
- LGROW Pens
- LGROW Custom Baseballs



City of Hudsonville  
Lower Grand River Watershed  
2017-2018 MS4 Progress Report

- Many Permittees displayed lamppost banners when first purchased in 2012 to advertise the presence of the Grand River, Rogue River, and Plaster Creek Watersheds. The banners featured the LGROW logo and the message "Yours to Protect." In early 2018, 4 communities ordered additional banners for display, including new banners for Buck Creek and the Thornapple River.



Banners on display in Spring Lake

- Through cooperation of staff in permitted MS4 communities, Public Engagement Committee participants, GVMC staff, and other members of LGROW, about 50 events around the watershed had representation from the Lower Grand River. Event participation by community is detailed in Table 4. Community-specific event activities are detailed in each Permittees' PEP questionnaire. Events attended by more than one MS4, or that were coordinated through LGROW, are discussed in the section following Table 4, and in the Delivery Method section of corresponding objectives.

City of Hudsonville  
 Lower Grand River Watershed  
 2017-2018 MS4 Progress Report

<b>Table 4 LGROW and MS4 Participant Events</b>		
<b>MS4 Community</b>	<b>Event/ Activity</b>	<b>Date</b>
Cascade Charter Township	LGROW Spring Forum Host	5/11/2018
Ferrysburg, City of	LGROW Focus Group	12/18/2017
Forest Hills Public Schools	Classroom Programming through Groundswell	Ongoing
Georgetown Charter Township	Jenison Public Schools Collaboration	Ongoing
	Ottawa County Water Quality Forum	11/30/2017
Grand Haven, City of	Earth Day Festival	4/21/2018
	LGROW Focus Group	12/18/2017
	Robinson Elementary	3/21/2018
	Coast Guard Festival	7/28 - 8/5/2017
	Salmon Festival	9/16/2017
Grand Rapids, City of	Home Show	3/1-4/2018
	Mayors Grand River Cleanup	9/9/2017
	Ottawa County Water Quality Forum	11/30/2017
	Grand River Water Festival	6/23/2018
	Dia del Nino	4/28/2018
	Canoemobile	5/7-5/11/2018
	Presentation to Museum School	10/11/2017
	Water Resource Recovery Facility Tours	Ongoing
	Rainbarrel Workshop	7/29/2018
	WhiteCaps Game	7/26/2018
	Grand River Spring Forum	5/11/2018
Grand Rapids Charter Township	Partner with FHPS	Ongoing
Grandville, City of	Buck Creek Cleanup	8/5/2017
	Mayors Grand River Cleanup	9/9/2017
	Michigan Week Community Event	5/16/2018
Hudsonville, City of	Ottawa County Water Quality Forum	11/30/2017
Kent County Drain Commissioner	Grand River Spring Forum	5/11/2018
Kent County Road Commission	Facility Tours	Ongoing
Kentwood, City of	Touch A Truck/DPW Behind the Scenes (with Kent Co DPW)	5/16/2018
	Buck Creek Cleanup	8/5/2017
	LGROW Focus Group	12/18/2017
	Grand River Spring Forum	5/11/2018

<b>Table 4 LGROW and MS4 Participant Events</b>		
<b>MS4 Community</b>	<b>Event/ Activity</b>	<b>Date</b>
Ottawa County Administration and Water Resources Commissioner	Ottawa County Water Quality Forum	11/30/2017
	Grand River Spring Forum	5/11/2018
Ottawa County Road Commission	Partner with Georgetown Township & Jenison Public Schools	Ongoing
Plainfield Charter Township	Grand River Spring Forum	5/11/2018
Sparta, Village of	Nash Creek Cleanup-Planting	4/18//2018
	Village Hazardous Waste Collection	4/19/2018
	Partnership with Sparta Schools	Ongoing
Spring Lake, Village of	Mill Point Park River Cleanup	5/12/2018
	LGROW Focus Group	12/18/2017
Walker, City of	Grand River Spring Forum	5/11/2018
	Indian Mill Creek Cleanup	6/2/2018
	KDL Reading Carnival	6/12/2018
Wyoming, City of	Buck Creek Cleanup	8/5/2017
	Partnership with Godwin and Wyoming Schools	Ongoing
	City Cleanup	4/21/2018
	Facility Tours	Ongoing
	Grand River Spring Forum	5/11/2018

➤ The Quiet Water Symposium promotes non-motorized outdoor recreation and a shared concern for our Great Lakes environment. The 23rd Annual Symposium was held on March 3rd, 2018. LGROW hosted a booth with several watershed displays and distributed information and giveaways focused on watershed awareness and the development of a Water Trail throughout the Grand River. Although this event takes place outside the LGRW, many of the attendees travel through the Lower Grand during their excursions. The Symposium also presents a valuable opportunity to partner with our upstream watershed, the Middle Grand River





Organization of Watersheds (MGROW), who is actively involved in public outreach through their own MS4 program.

- LGROW hosted a table at the Blandford Nature Center Earth Day event on April 21, 2018. This was a public event designed to connect residents of the Grand Rapids metro area with their local community



conservation resources, information on new and upcoming projects, and highlight volunteer opportunities to get involved. LGROW hosted a table with information on the watershed, the LGROW Rainscaping program pilot in Indian Mill Creek Watershed, and stormwater educational materials focusing on pet waste and car wash pledges.

- The 15th Annual Grand River Forum on May 11, 2018, was put on by LGROW at the Wisner Center in Cascade Township. The event offered 111 attendees a regional perspective on emerging issues and accomplishments from around the Watershed. This year's keynote speaker, Al Steinman, from GVSU's Annis Water Resources Institute, spoke about Integrated Water Management. Next, Scott Conners (City of Walker Engineer and LGROW Board Chair) moderated a Panel Discussion that focused on the new post-construction control stormwater requirements. Panelists included Carrie Rivette, Wastewater/Stormwater

WELCOME TO THE  
LOWER GRAND RIVER ORGANIZATION OF WATERSHEDS'  
15th ANNUAL

# Grand River Spring Forum

CASCADE TOWNSHIP LIBRARY  
WISNER CENTER  
MAY 11, 2018  
8:30 am - 11:30 am

## Agenda

8:00-8:30	Registration
8:30-8:45	Welcome and Introduction
8:45-9:05	Keynote Address
9:05-9:35	Panel Discussion
9:35-9:55	Passing of the Paddle
9:55-10:10	Break
10:15-11:15	*Shed Talks
11:15-11:25	Questions and Evaluations
11:25-11:30	Closing and Next Steps
12:00 PM	Boxed Lunch and Kayak Trip *Must be preregistered to attend Ending at Thornapple Brewing Co.



Superintendent of  
the City of Grand

Rapids, Teresa Siedel, Director of the Water Resources Division of MDEQ, and Jeff Gritter, Project Manager at Vriesman and Korhorn Civil Engineers. The LGROW Chair, who was previously Scott Conners from the City of Walker, changed hands to Carrie Rivette from the City of Grand Rapids. This change was commemorated with a 'Passing of the Paddle' ceremony.

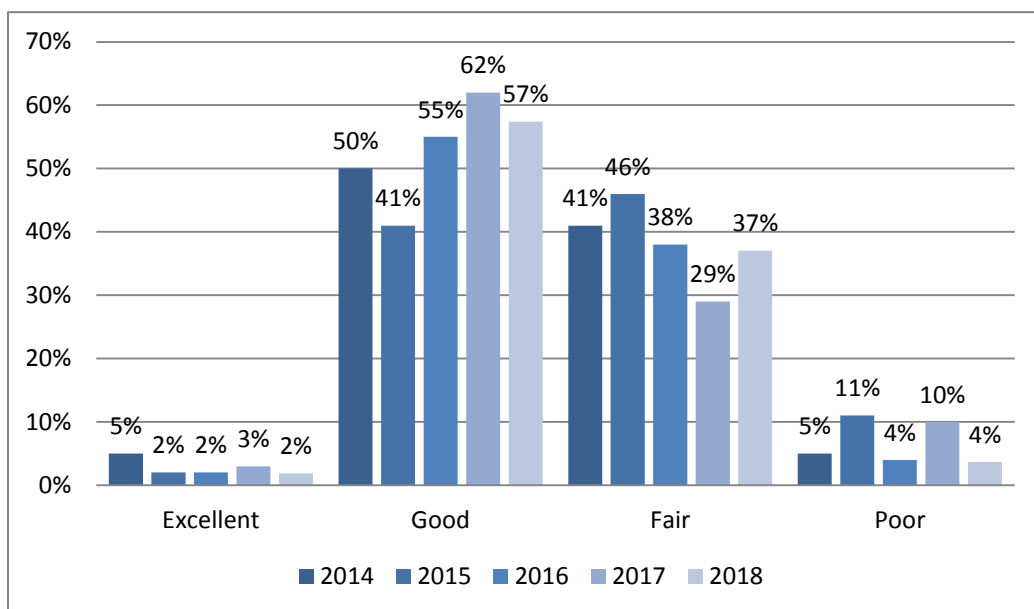
The remainder of the forum focused on emerging watershed issues. Presentations were given by Jessie Schulte (Kent County Conservation District) and Rob Petit (ECT) on the Regional Conservation Partnership Program; Brenda Perry (Facilitator, Kent Innovation High School), Joe Phillips (Design Lab Instructor, Kent Career Tech Center) and their students on place-based environmental education curriculum they used in their classrooms; Wes Landon (Native Edge, LLC.) and Julie Parks (Executive Director of Workforce Training, Grand Rapids Community College) on the Rainscaping Program; Natalie Henley (West Michigan Environmental Action Council) on the Grand River Water Trail; LGROW Committee Chairs gave updates for each committee; and LGROW Staff discussed the pre-forum survey results.

Each forum participant completed surveys after both registering and attending the event. A



selection of the questions from each survey is asked annually to determine if there is a measurable change in people's attitudes toward and perception of the river. Figure 5 shows an increase in respondents identifying water quality in the Grand River as "Fair" rather than "Poor" from 2017 to 2018.

**Figure 4. 2017 Survey Results: How would you rate the water quality in the Grand River?**





City of Hudsonville  
Lower Grand River Watershed  
2017-2018 MS4 Progress Report

- LGROW sponsored the Grand River Water Festival on June 23, 2018, at Riverside Park, which was attended by approximately 3,000 people. The festival is a free-of-charge, day-long, music driven, environmental festival featuring traditional folk, country, bluegrass, Cajun, blues, and world beat music performed by Michigan musicians. Visitors to the LGROW booth identified their



location in the watershed by referencing maps, and Major Runoff, the Stormwater Mascot, engaged with children and adults. Volunteers at the LGROW booth helped children of all ages create paintings of nature scenes using native soils to the watershed, similar to artists who create field drawings using natural materials they find in the environment. The LGROW booth's educational materials focused on how

homeowners can reduce stormwater runoff from their properties by installing green infrastructure practices through the LGROW Rainscaping program.

- LGROW hosted a concourse table at a WhiteCaps game on Thursday, June 26, 2018. GVMC staff and volunteers from the City of Grand Rapids (a MS4 permitted community) helped run a booth. Volunteers handed out LGROW baseballs, LGROW brochures, Pet Waste Pledges with pet waste bag dispensers, and Car Wash Pledges with shammies. Volunteers discussed the importance of watershed protection with attendees of the game.



- LGROW worked with students from schools throughout the watershed to educate about the connections between land use and water quality. LGROW led activities for 465 students from the City of Grand Rapids and Plainfield Township focused on macroinvertebrate sampling and runoff vs. infiltration at the annual Canoemobile event at Riverside Park in Grand Rapids. LGROW also worked directly with Jenison Public Schools and Forest Hills Public Schools to teach 99 students at Bauerwood

Elementary and 90 at Northern Trails 5/6 about the Grand River Watershed and the ultimate discharge location of stormwater systems, as well as personal actions that can protect water quality. These activities resulted in students marking 50 catch basins on Northern Trails' campus and 100 catch basins in the neighborhood surrounding Bauerwood. LGROW also assisted schools with their existing educational activities surrounding watersheds and nonpoint source pollution. LGROW led an activity connecting land use and habitat with macroinvertebrates and water quality at a Water Field Day for 525 students in Godfrey Lee schools in Wyoming, helped 25 students stencil 9 catch basins and complete rain garden/riparian maintenance near Buck Creek in Grandville, and assisted a teacher at Pinewood Elementary in Kentwood Public Schools with her annual Buck Creek education day for 120 students. Additionally, 40 students from Kenowa Hills High School participated



Students marking catch basins at Northern Trails 5/6 in Forest Hills

in the spring Indian Mill Creek Cleanup. LGROW also participates as a member of the Groundswell advisory council, which supports schools in the Lower Grand River Watershed as they implement place-based education and stewardship projects in the watershed. Groundswell reaches approximately 500 students annually through its programs focused on the Lower Grand River Watershed, including supporting projects at 3 schools in the nested jurisdiction of Kentwood Public Schools and at 5 schools in the permitted district of Forest Hills Public Schools.

- The 'Find My Watershed Tool' was improved during this reporting period and can be accessed via LGROW's homepage, or at: [https://www.google.com/maps/d/u/0/viewer?mid=1WuQZRA612p4X1t\\_9i4qNYIP\\_830\\_ZIi-&ll=42.99923233465322%2C-85.46882900000003&z=9](https://www.google.com/maps/d/u/0/viewer?mid=1WuQZRA612p4X1t_9i4qNYIP_830_ZIi-&ll=42.99923233465322%2C-85.46882900000003&z=9). An advertisement was created through National CineMedia, LLC regarding this tool. The 30-second advertisement is also available for viewing on LGROW's website. The advertisement ran for 8 weeks as a digital media campaign, targeted online to people who were in the Lower Grand River Watershed. About 79% of people that the advertisement was delivered to watched the entire commercial. Industry average is around 60%. The commercial was shown 120,419 times.

- Seasonal Watershed 'Tip' fliers were distributed to communities. These fliers focused on positive actions that Department of Public Works employees and citizens alike could take to improve the water quality in the watershed. Tips focused on different actions that were relevant to that respective season.



Fall Seasonal Tips Flier

Public Education Topic 2 - Ultimate Stormwater Discharge Location and Potential Impacts

*PEP Objective 2:* Education on the location of residential stormwater system catch basins, where the system discharges, and impacts from pollutants.

*Target Audience:* Landscapers/lawn care companies, auto repair shops, commercial power washers, carpet/floor cleaning companies, commercial operations, industries, residents, and local businesses

*Content of Message:* 1) Storm drains connect to your local lakes and streams, not a water treatment plant. 2) Prevent pollution from entering your storm drains and protect the health of your family, your community, and the Grand River. 3) Education on the impacts of stormwater pollutants. 4) Education on the stormwater system and receiving water bodies in a person's or company's neighborhood.



Storm drain markers

This topic was chosen as one of two key topics by the Public Education Committee to focus on during this reporting period.

*Delivery Method:*

- Permittees installed the plastic storm drain markers designed by the Public Engagement Committee. The drain markers carry the messages "Keep your Lakes Great and your Rivers Grand." Some Permittees also engaged with community partners to do storm drain stenciling events which are detailed in the PEP Questionnaire. This image was also used on several giveaways including vinyl stickers and magnets. In total, 150 drain markers were installed and 9 storm drains stenciled with the message "No Dumping: Drains to Waterway" in the watershed.
- Permittees utilized a variety of stormwater displays including the drop toss game, the watershed pushpin map, the LGROW banners on non-point source pollution, Car Wash and Pet Waste Pledge posters, and the "Grand River Yours To Protect" informational poster board at a variety of events and locations throughout the Watershed. The PEP Questionnaire included in this report details when and where these displays were used by individual Permittees.
- An advertisement explaining that storm drains lead directly to rivers, lakes and streams was printed on the back of all household hazardous waste collection flyers printed for Kent County MS4 communities.
- Troutie Stress Balls were provided for communities to distribute. The fish shaped stress balls had the message: 'Only rain in the drain, it leads directly to my home!' This give-away allowed people to easily make the connection between storm drains and water quality as it relates to aquatic habitat.



Household Hazardous Waste flyer advertisement

Public Education Topic 3 - Public Reporting of Illicit Discharges

*PEP Objective 3:* Encourage public reporting of the presence of illicit discharges or improper disposal into the stormwater system.



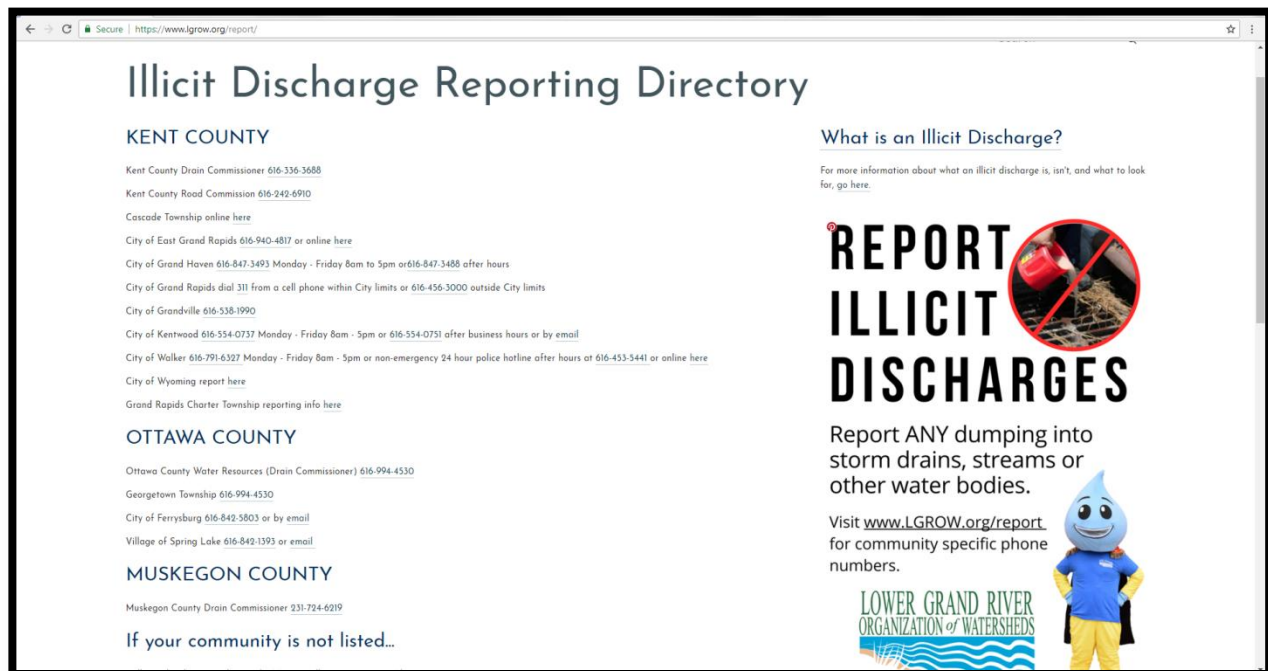
City of Hudsonville  
Lower Grand River Watershed  
2017-2018 MS4 Progress Report

*Target Audience:* Residents, public employees, businesses, construction activities, industries, and septic system owners/haulers.

*Content of Message:* 1) How to identify illicit discharges. 2) How to report illicit discharges. 3) Water quality impacts from illicit discharges. 4) Consequences/penalties associated with illicit discharges and improper waste disposal. 5) Proper septic system care and maintenance. 6) How to recognize system failure. 7) Impacts failing systems have on water quality. 8) Where to go for assistance.

The Public Reporting of Illicit Discharges was selected by the Public Education Committee as one of two key topics to focus on for this reporting period. It was important that communities focused on this topic because IDEP outfall screening occurred for many municipalities in the watershed during the summer of 2018.

*Delivery Method:*



The screenshot shows a web browser window displaying the "Illicit Discharge Reporting Directory" website. The page is organized into sections for Kent County, Ottawa County, and Muskegon County, each listing local reporting contacts. On the right side, there is a section titled "What is an Illicit Discharge?" with a link for more information. Below this is a large graphic that says "REPORT ILLICIT DISCHARGES" with a red circle and slash over an image of a red bucket dumping waste. Further down, it says "Report ANY dumping into storm drains, streams or other water bodies." and provides the website URL [www.lgrow.org/report/](https://www.lgrow.org/report/) for community-specific phone numbers. At the bottom right, there is a logo for the Lower Grand River Organization of Watersheds featuring a blue water drop character.

- A reporting website for MS4 communities across the Lower Grand River Watershed was created in order to offer a Reporting Directory for DPW employees or citizens seeking information about how to report illicit discharges. This website can be found at: <https://www.lgrow.org/report/>. Communities were encouraged to share this information on their municipal webpages, and on social media.

Information was also added to the LGROW website to inform the public about what an illicit discharge is.

- Illicit discharge magnets and coasters were created in conjunction with the reporting website to promote use of the website and to raise awareness for DPW employees and citizens, encouraging them to report illicit discharges.
- A newsletter article titled, 'Reduce and Report Pollution Entering the Grand River' was published for all MS4s to distribute to their employees or citizens. This article highlighted the reporting webpage, and gave advice on how to reduce stormwater pollution.



Coasters

- Permittees made information about how to report illicit discharges available to residents and staff through a variety of channels. Some communities promote the Citizens Reporting form developed previously by LGROW, while others use an online reporting form. The method each community used to distribute this information is detailed in PEP Questionnaires.
- Permittees distributed the article *"How you as an Employee Can Help Reduce Pollution Entering the Grand River"* to their employees. This article encourages employees to report stormwater discharges to their community's stormwater coordinator.
- Permittees distributed copies of USEPA's *"Do your Part- Be Septic Smart!"* brochure to their residents. This brochure describes what a septic system is, how it works, and how to maintain it. LGROW participated in SepticSmart week September 18-22, 2017 by publishing a blog post and daily social media posts about proper septic maintenance.



#### Public Education Topic 4 - Personal Actions that can Impact the Watershed

*PEP Objective 4:* Education on the need to minimize the amount of residential or non-commercial wastes washed into the storm sewer system.

*Target Audience:* Residents, schools, non-profit groups conducting carwash fundraisers, public employees, visitors, recreational users, riparian landowners

*Content of Message:* 1) BMPs for car, pavement, power washing. 2) Preferred cleaning materials and practices, "phosphate free as important as biodegradable". 3) BMPs for pesticide use, fertilizer use and their disposal. 4) BMPs for proper management of grass clippings, leaf litter, and animal wastes. 5) BMPs for residential deicer use. 6) BMPs for native vegetation on residential properties as an alternative to turf grass. 7) Effects of residential wastes on our waterbodies. 8) Education on low impact development techniques.



*Delivery Method:*

- Permittees distributed the brochure "*Make your Household the Solution to Water Pollution*". The Public Engagement Committee contracted with the Hispanic Center of West Michigan to produce a Spanish translation of this brochure for communities as well.
- Several communities hosted rain barrel events or rain garden work days as detailed in their PEP Questionnaires.
- Permittees collected pet waste pledges from dog owners in exchange for a free pet waste bag dispenser to hook to the pet's leash. The pledges also provide information on dog parks in the Watershed and discuss the connection between picking up pet waste and protecting stormwater. This brochure was adapted, with permission, from a similar program in Portland, Oregon. In this reporting period, 127 new pet waste pledges were collected from around the watershed.
- Permittees collected car wash pledges from residents in exchange for a free shammy to use for home car washes. The pledge provides the following information about car washes: *There's no problem with washing your car, it just matters how and where you choose to wash it. The average homeowner uses 116 gallons of water to wash a car. If you wash your car in your driveway, all that water, along with the soap, grease, brake dust, oil, and dirt that you wash off your car flows directly into the nearest storm drain. From there, it's just a short trip to the Grand River and eventually Lake Michigan.* In addition, residents keep a portion of the pledge that provides other environmental friendly car care tips. In this reporting period, 52 new car wash pledges were collected from around the watershed.



- LGROW developed a flyer describing proper procedure for draining residential swimming pools in the fall. This was distributed publicly online via [www.lgrow.org](http://www.lgrow.org) and made available for customization by MS4 communities. The flyer can be downloaded at <https://www.lgrow.org/ms4information>.

#### Public Education Topic 5 - Waste Management Assistance

*PEP Objective 5:* Education on proper disposal of household hazard waste (HHW), travel trailer/boating sanitary wastes, chemicals, motor vehicle fluids, and unused medications.

*Target Audience:* Residents, visitors, and public employees

*Content of Message:* 1) Protect your family's health: dispose of unwanted paints, solvents, and cleaners at your county collection center. 2) Recycle used oil and automotive fluids. Just one gallon of used motor oil dumped down a catch basin can contaminate one million gallons of your drinking water. 3) Education on types of HHW and available alternatives. 4) Education on disposal locations of HHW, travel trailer/boating sanitary wastes, chemicals, motor vehicle fluids and unused medications.

#### *Delivery Method:*

- Permittees and LGROW.org shared the newsletter articles "How You Can Help Reduce Pollution Entering the Grand River" and "What Can You Do to Help Protect Your Watershed?" These articles explain the watershed concept and encourage residents to dispose of pet waste, paints, motor oil, etc., in the appropriate locations, not in the storm drains.
- Permittees distributed the flyer "Make Your Household the Solution to Stormwater Pollution" in both English and Spanish, which also details the importance of proper disposal of household hazardous waste.
- Both Kent and Ottawa County communities distributed household hazardous waste flyers at events and provided information on recycling household hazardous waste via the phone and websites. Many permittees also opted to distribute these materials at their respective community events. Kent County's expanded household hazardous waste collection hours to allowed more Kent County residents to take advantage of this service.
- Many communities hosted clean up days to encourage proper disposal of unwanted materials. Details of these events, as applicable, are provided in individual PEP Questionnaires and Part 7.



Public Education Topics 6 - Management of Riparian Lands

*PEP Objective 6:* Education concerning management of riparian lands to protect water quality.

*Target Audience:* Riparian landowners, construction activities, landscapers

*Content of Message:* 1) Importance of riparian corridors/stream buffers. 2) How to landscape for better water quality. 3) Education on shoreline stabilization techniques, stream buggers, filter strips, conservation easements, and bioengineering techniques.

*Delivery Method:*

- Permittees distributed the brochure "*What Every Landscaper Should Know*, to their subcontractors and facilities staff. These brochures detail BMPs for fertilizer and pesticide application, lawn care, and native plantings.
- LGROW launched and promoted its Grand River Rainscaping: Treating Stormwater Naturally program. This program aims to promote installation of green infrastructure and native landscaping practices to reduce stormwater runoff from residential properties and improve water quality. Residential site assessments were performed on 28 properties, 19 of which were in MS4 communities, and a 600 square foot demonstration rain garden was installed at West Catholic High School. Residents who have a site assessment completed receive a customized report of what green infrastructure practices are best suited to their site as well as resources for implementing those practices. The Rainscaping program is aimed at both shoreline and non-shoreline properties.





### 2017 Public Education Focus Group

A focus group was held on December 18, 2017 at the offices of GVMC with the purpose to determine changes in the awareness, education, and behavior of the public as a result of stormwater education efforts. The last focus group held to evaluate the PEP was in 2009 at Fishbeck, Thompson, Carr & Huber (FTC&H) in Grand Rapids to determine changes in the awareness, education, and behavior of the public as a result of stormwater education efforts in 2008 and 2009.

The 2017 focus group was held with the purpose to determine changes in the awareness, education, and behavior of the public as a result of stormwater education efforts since 2009. Using the information provided from the focus group, the PEP for the LGRW communities can be edited in the future to

better serve the public. The challenges, successes, and recommendations communicated in this report will be evaluated to modify the PEP as needed. The updated PEP will result in a more effective public outreach campaign to reduce stormwater pollution and raise MS4 awareness during the next permit cycle.

Focus group participants were nominated by local units of government that maintain MS4 permits. Each participating local unit of government was asked to submit two potential participants that meet the following criteria:

1. The nominees must live in Kent or Ottawa Counties, specifically in the Lower Grand River Watershed, preferably in the community they are representing
2. The individuals do not manage or have direct involvement with your community's MS4 Permit
3. The nominees have had the potential to encounter LGROW deliverables (examples: events, educational outreach, brochures or fliers, LGROW website or Facebook page)

GVMC staff administered the 1.5 hour long focus group session on December 18, 2017. Twelve invited individuals were present, representing Kent and Ottawa Counties. Eleven of the 23 municipalities that



GVMC works with regarding MS4 permits were represented. There was a diverse demographic represented among the group.

Discussion began with introductions of everyone present and an ice breaker question. The conversation followed six dialogue questions led by GVMC. The dialogue questions were as follows:

2017 LGROW Focus Group Dialogue Questions
1. What do you know about LGROW?
2. What LGROW information have you seen, heard, or read?
3. Did the message (that you have seen, heard, or read) influence you? If so, how?
4. Have you seen any stormwater or pollution prevention messaging at your workplace? Who was the message from? (LGROW, employer, other org.)
5. How could LGROW project deliverables be improved?
6. Where and how do you get information on community activities?

This focus group ended up being a very educational experience for its participants while providing valuable feedback on LGROW outreach activities. The mixed demographic of participants and the number of MS4 communities participating provided a fairly diverse view of LGROW's reach into the watershed, and participants shared many ideas to improve LGROW messaging.

Key take-aways for LGROW from the focus group are summarized in the following table:

How LGROW messages can be improved	
New Target Audiences	<ul style="list-style-type: none"> <li>• <i>Municipal employees</i></li> <li>• <i>Adults through schoolchildren</i></li> <li>• <i>People living in apartment complexes</i></li> <li>• <i>LEED certified building owners</i></li> <li>• <i>Farmers</i></li> </ul>
Reworking Messages	<ul style="list-style-type: none"> <li>• <i>Translating materials in to the language of the neighborhood</i></li> <li>• <i>Address 'why' citizens need to know the message presented</i></li> <li>• <i>Simplify messages</i></li> </ul>
Delivery Mechanisms	<ul style="list-style-type: none"> <li>• <i>Placement of watershed information (placement of 'Entering the Watershed' signs, more signs for GI)</i></li> <li>• <i>Tours of municipalities and events at breweries</i></li> <li>• <i>Word of mouth</i></li> </ul>

City of Hudsonville  
Lower Grand River Watershed  
2017-2018 MS4 Progress Report

	<ul style="list-style-type: none"><li>• <i>Presence at festivals</i></li><li>• <i>Advertising in churches in the watershed</i></li></ul>
--	--

The full 2017 Focus Group Report is attached to this Progress Report. Please reference it for further details.

## 2018 Stormwater Public Education Plan (PEP) Questionnaire

Reporting period of August 1, 2017 to July 31, 2018

Please complete this questionnaire to provide an evaluation of the stormwater education activities you have implemented between **August 1, 2017 and July 31, 2018**. GVMC will include this information, along with watershed-wide measures of effectiveness, in your 2017 Progress Report to MDEQ. **Please return this form to GVMC by September 7, 2018.**

**Community Name: City of Hudsonville**

### **Brochures, Flyers, and Giveaways:**

1. Which of the following general stormwater awareness/LGROW materials (brochure, flyers, giveaways) did you order/distribute from GVMC this year:

- |  |  |
|--|--|
| <input type="checkbox"/> LGROW Brochures   | <input checked="" type="checkbox"/> LGROW "magic scarf"  |
| <input type="checkbox"/> Grand River Infographic   | <input type="checkbox"/> LGROW Totebags  |
| <input checked="" type="checkbox"/> "Make your home the Solution to Stormwater Pollution" brochure | <input type="checkbox"/> "Keep your lakes Great and your River Grand" sticker                                      |
| <input checked="" type="checkbox"/> "Do your part – be SepticSmart! brochure                       | <input checked="" type="checkbox"/> Troutie coloring book  |
| <input type="checkbox"/> Household hazardous waste disposal guidelines from Kent County DPW        | <input checked="" type="checkbox"/> Paint by number watershed map  |
| <input checked="" type="checkbox"/> Seasonal Tip Sheets (Fall, Winter, Spring, Summer)             | <input type="checkbox"/> Watershed hand stamp  |
| <input type="checkbox"/> LGROW Water Bottles   | <input checked="" type="checkbox"/> "Report Illicit Discharges" magnet   |
| <input checked="" type="checkbox"/> LGROW Chapstick  | <input checked="" type="checkbox"/> Trout stress ball with "Only rain in the drain – it leads directly to my home" |
| <input checked="" type="checkbox"/> "Keep your Lakes Great and your River Grand" dry bags          | <input checked="" type="checkbox"/> Report Illicit Discharges beverage coaster                                     |
|  | <input type="checkbox"/> Other:  |

2. Have you given away all the materials (brochures, flyers, giveaways) you ordered from GVMC this year?

- Yes  No

Brochures and Flyers are always available at City Hall and Gary Byker Memorial Library

3. Where did you distribute your materials?

- Government office  Library  Community event  Other

4. Approximately how many people did you interact with during distribution of materials?  
Approximately 600

5. What was the most popular giveaway from the materials distributed in your community?  
Trout stress balls and temp tatoos

6. What topics are of greatest interest to members of your community?

- |   |   |
|---|---|
| <input type="checkbox"/> How to report stormwater pollution                         | <input checked="" type="checkbox"/> Proper use of pesticides/fertilizers/herbicides |
| <input type="checkbox"/> Stormwater discharge locations/impacts                     | <input type="checkbox"/> Proper yard waste disposal                                 |
| <input checked="" type="checkbox"/> Native vegetation/rain gardens/riparian buffers | <input type="checkbox"/> Proper septic system maintenance                           |
| <input type="checkbox"/> Proper vehicle care/motor oil disposal                     | <input checked="" type="checkbox"/> Household hazardous waste management            |

### **Illicit Discharge Reporting**

7. Did you distribute illicit discharge reporting materials to your residents?



- Hard copies of "Citizens Reporting Brochures" from the IDEP – Number distributed:
- Link to LGROW's reporting page posted to your website <https://www.lgrow.org/report/>
- Report Illicit Discharge magnets – Number distributed:

Please describe any interest, comments, or discussion generated from the brochure, magnet or website <https://www.lgrow.org/report/>:

No comments generated

How many complaints were received from the general public regarding illicit discharges? None

### **Newsletters, Banners, and Displays**

8. Did you order and display new lamppost banners during this permit cycle?
- Ordered and displayed new lamppost banners at (streets):
  - Displayed lamppost banners provided in 2009-2013 at (streets):
  - Did not order or display lamppost banners
- Lamp post banners were on display at the DPW Open House during National DPW Week
9. Did you distribute stormwater focused newsletter articles to your residents?  Yes  No
- a. Please describe any interest, comments, or discussion generated from the articles Not aware of any
  - b. If applicable, list the newsletter name or webpage address used to distribute stormwater information to the public: Hudsonville Hometown News (quarterly newsletter to all residents) [www.facebook.com/cityofhudsonville/](http://www.facebook.com/cityofhudsonville/)
  - c. If applicable, how many residents received your community newsletter? Approximately 2200
  - d. If applicable, how many total website hits did you receive for your online newsletter articles or stormwater information website? Does not track
10. Did you use any of the following materials or activities at events during the reporting period?
- |  |                                     |  |
|--|-------------------------------------|--|
| Stormwater poster board display            | <input type="checkbox"/> Yes, Date: | <input checked="" type="checkbox"/> No |
| EnviroScape interactive stormwater model   | <input type="checkbox"/> Yes, Date: | <input checked="" type="checkbox"/> No |
| Watershed map with pushpins                | <input type="checkbox"/> Yes, Date: | <input checked="" type="checkbox"/> No |
| Stormwater mural banner and scavenger hunt | <input type="checkbox"/> Yes, Date: | <input checked="" type="checkbox"/> No |
| Major Runoff stormwater mascot             | <input type="checkbox"/> Yes, Date: | <input checked="" type="checkbox"/> No |
| Interactive Corn Hole Board                | <input type="checkbox"/> Yes, Date: | <input checked="" type="checkbox"/> No |
| Interactive catch basin demos              | <input type="checkbox"/> Yes, Date: | <input checked="" type="checkbox"/> No |

### **Events and Pledges**

11. Did you host a seed bomb or native plant workshop?  Yes, on:  No
12. Did you distribute any additional educational materials on native plants?  
 Yes (Describe):  No
- At DPW Open house there were two table set up with Stormwater information and brochures
13. Please describe any interest, comments, or discussion generated from native plant workshops or giveaways:
14. Did your community collect pet waste pledges distributed with the public education materials?  
 Yes, Number: 2  No @ pet pledges were collected at Terra Square Farmers Market Pet Day
15. Did your community collect car wash pledges distributed with the public education materials?  
 Yes, Number:  No

Please describe any interest, comments, or discussion generated from either of the pledges and associated giveaways.

16. Did you implement a storm drain awareness activity between August 1, 2017 and July 31, 2018?

- Yes: (streets) on (dates)
- Yes, we held a storm drain stenciling event on (dates) and stenciled (streets)
- Yes, we have approximately (#) pre-marked catch basin backs/grates with the message "No dumping, drains to waterway"
- Yes, we hung door knob flyers on (streets) on (dates)

Please describe any interest, comments, or discussion generated from the activities above:

Have you noticed a reduction in storm drain dumping? Yes No Describe:

17. Please describe any interest, comments, or discussion generated from these materials/activities:

18. Did you participate in any community stormwater events? (check all that apply)

- Rain barrel workshop Date: Number of Attendees:
- Rain garden/Green Infrastructure Workday Date: Number of attendees:
- River clean up (location): Date: Number of Attendees:
- Ottawa County Water Quality Forum – November 30, 2017
- MWEA Watershed & Stormwater Seminar – December 5, 2017
- MWEA Watershed Summit – March 28, 2018
- Earth Day at Blandford Nature Center – April 21, 2018
- 15<sup>th</sup> Annual Grand River Spring Forum – May 11, 2018
- Grand River Water Festival – June 24, 2018
- MWEA Annual Conference – June 25-27, 2018
- West Michigan WhiteCaps Concourse Table – July 26, 2018
- Other: **Illicit Discharge Training** Date: 5-22-18 Number of Attendees:

19. Describe any materials distributed, number of attendees, messages used at these events:

20. If applicable, please describe any other stormwater public education activities your community implemented beyond the events described above (This includes education with school groups, other community events, etc.) and submit any relevant documentation.



## **PART 4 - IDEP**

### **Regional IDEP Activities**

The IDEP for the Lower Grand River Watershed was approved in July of 2013 as meeting requirements of the General Permit Application for Storm Water Discharges from MS4s. The IDEP is intended to prohibit and effectively eliminate illicit discharges to the MS4.

The IDEP is being implemented under a cooperative program administered by the Grand Valley Metropolitan Council (GVMC) and involving the county agencies and municipal units participating in the Watershed Approach. The approved IDEP utilizes an alternative approach which includes the sampling of all storm sewer outfalls to Waters of the State within the urbanized area for the following parameters: surfactants, temperature, ammonia, and pH. Cooperative agreements were signed by participating communities to ensure that any illicit discharges detected would be traced upstream to their point of origin within the approved timeline whether or not they crossed jurisdictional boundaries. Illicit discharges that were identified either by public reporting or staff identification during this reporting period are detailed in each community's IDEP. Descriptions of the other IDEP activities undertaken on an individual basis are included below. IDEP activities include dry-weather screening of discharge points, locating possible sources of contamination, responding to reported incidents, correcting the problems, and preventing new illicit connections.

Dry-weather screening was completed by the Kent County Drain Commissioner during this reporting period for the Drain Commissioner's MS4. Other communities in the watershed began outfall sampling in the summer of 2018, and that work had not been completed at the time this report was written. A full report on IDEP outfall screening will be included in next year's report.

**Community IDEP Activities**

<p>Please describe any dry-weather screening conducted during the reporting period and the findings of that screening.</p>
<p>Dry-weather screening is ongoing at the time this report was written. A full summary of screening for the summer of 2018 will be included in next year's annual report.</p>
<p>Please list any other known and/or resolved illicit discharges identified during the reporting period and status of elimination. For significant discharges, also list the pollutants involved with an estimate of the volume and loading.</p> <p>Examples of illicit discharges include: malfunctioning septic systems; sanitary sewer leaks, overflows, or cross-connections; laundry water discharges; leaking fluids from vehicles, barrels, dumpsters, or tanks; concrete truck wash water; polluted runoff from temporary or permanent storage areas; improper fire hydrant flushing; spills from auto accidents; power washing wastewater; industrial/commercial wastewater, dumping; and any other violation of the IDEP ordinance.</p>
<p>On September 27, 2018 a possible illicit discharge was reported directly to the DEQ. The City of Hudsonville Fire Department was called out to the site. It was reported as oil draining everywhere and draining into the storm sewer. Upon inspection by the DPW Superintendent (and Fire Chief) it was noted a few small standing puddles, with nothing running or moving towards the drains. Dry oil spill was applied to the puddles and disposed of properly. The construction crew – Red Line Excavating was contacted and made aware of the situation. Amanda StAmour (DEQ) was notified following the IDEP implementation procedure and it was determined that the spill did not result in a discharge.</p>
<p>Please list the status and schedule for elimination for any illicit discharges identified but not eliminated during this reporting period. Also, report the status of any illicit discharges identified but not eliminated during previous reporting periods.</p>
<p>N/A</p>

Please describe actions taken when indications of illicit discharges have been identified, if any.

FUEL SPILL PROCEDURES

- CALL COMES FROM CENTRAL DISPATCH TO DPW. FIRE, EMS
- DPW REponds WITH SAND OR BAGS TO HELP CONTAIN THE SPILL
- "YOUNGS" ENVIRONMENTAL IS ALSO DISPATCHED

AMOUNT OF CONTAMINATION MUST BE ASSESSED.

- AMANDA ST. AMORE AT LOCAL **DEQ – notify Amanda and report incident**  
At 616 356-0215 (emergency DEQ phone # to report 1-800-292-4706)  
They will record all information pertaining to incident
  1. May need to enforce illicit discharge according to MS4 permit violations
    - a. Impacts of illicit discharge  
Need to file a report to Amanda within a few days  
Review City Ordinance for possible enforcement and or violations

Please provide:

- An estimated quantification of the number of discharges eliminated, and
- An estimated quantification of the volume of illicit flow eliminated (*For large spills or, where the amount discharged is possible to estimate*).

N/A

Identify any specific coordination with the health department in response to illicit discharge elimination for failed or failing septic fields.
N/A
Describe the effectiveness of the program to prevent illicit discharges and the method used to assess effectiveness.
The City of Hudsonville residents seem to be responding well to the educational efforts.

## **PART 5 - New Point Source Discharges of Stormwater**

Do you own or operate any NEW or previously unidentified stormwater discharges?

Yes  No If "yes," please indicate which discharge points are new on your outfall map or list.

Is your stormwater discharge point map attached or provided electronically?

Map is attached  Map is provided electronically  Other. Please explain in comments section.

Is your stormwater discharge point list attached or provided electronically?

List is attached  List is provided electronically  Other. Please explain in comments section.

Comments:

Map and list were originally submitted to MDEQ as Appendix 2 in Illicit Discharge Elimination Plan revision, July 30, 2013. Updated lists were submitted to the MDEQ as part of the 2016 MS4 Permit Application which is currently under review. During outfall screening in the Summer of 2018 (which is ongoing at the time of this report), additional outfalls that were not on the maps provided to DEQ were inspected and recorded. GVMC will update the City's maps and they will be included in the next annual report, or to DEQ as a part of the MS4 permit application.

## PART 6 - Nested Drainage System Agreements

Please list all nested jurisdictions with whom you have a cooperative agreement:		
Name of Nested Jurisdiction	Agreement previously provided to MDEQ	Agreement attached
N/A	<input type="checkbox"/> Yes <input type="checkbox"/> No	<input type="checkbox"/> Yes <input type="checkbox"/> No
	<input type="checkbox"/> Yes <input type="checkbox"/> No	<input type="checkbox"/> Yes <input type="checkbox"/> No
	<input type="checkbox"/> Yes <input type="checkbox"/> No	<input type="checkbox"/> Yes <input type="checkbox"/> No
Comments:		

## **PART 7 - Other Actions**

Please list any extra efforts your community has conducted above and beyond your commitments recorded above (e.g., stream buffer ordinance adoption, new management techniques, invasive species control, habitat enhancement/protection, logjam removal, stream/beach clean-ups, etc.) that have helped implement the **Lower Grand River Watershed Management Plan**:

The Department of Public Works employees are around the City daily, making sure all systems are functioning properly.

Please list any other actions your community has conducted to reduce stormwater pollution

Every quarter the City of Hudsonville mails a community newsletter to add addresses in the City and an article regarding stormwater is always included.

## PART 8 - Revisions to the SWPPI

Based on your evaluation of the effectiveness of your stormwater BMPs, are there any commitments that should be added to or removed from the SWPPI?

No, the SWPPI does not need any revisions

The following revisions to the SWPPI could be considered:

Original SWPPI Section/Subsection	Revision



## Additional Documentation



Photo from: DPW Open House



# NON-HAZARDOUS MANIFEST

<b>NON-HAZARDOUS MANIFEST</b>		1. Generator's US EPA ID No.	Manifest Doc No.	2. Page 1 of
3. Generator's Mailing Address: City of Hudsonville 3275 Central Blvd Hudsonville, MI 49426		Generator's Site Address (if different than mailing): City of Hudsonville 5713 Balsam Dr. Hudsonville, MI 49426 Ottawa County		A. Manifest Number <b>WMNA T 558365</b>
4. Generator's Phone 616-553-0300		B. State Generator's ID		

Driver's Signature



9979322

Autumn Hills Landfill  
700 36th Avenue  
Zeeland, MI, 49464  
Ph: (616)688-5777

Original  
Ticket# 990200

Customer Name HUDSONVILLE CITY OF HUDSONVILLE  
 Ticket Date 06/23/2017  
 Payment Type Credit Account  
 Manual Ticket#  
 Hauling Ticket#  
 Route  
 State Waste Code  
 Manifest T558365  
 Destination Grid  
 Profile 10130001 (RESIDENTIAL STREET SWEEPINGS)  
 Generator 129-CITYOFHUDSONVILLE5713BAL5 CITY OF HUDSONVILLE

Carrier NYKAMP EXCAVATING NYKAMP  
 Vehicle# NYKAMP9902  
 Volume 20.0  
 Container  
 Driver  
 Check#  
 Billing # 0000179  
 Gen EPA ID  
 Grid

	Time	Scale	Operator	Inbound	Gross	Net	Weight
In	06/23/2017 14:00:36	SCALE1	BARR		103420 lb		
Out	06/23/2017 14:06:45	SCALE1	BARR		3900 lb		
			* Manual Weight				66400 lb
							33.23 Tons

Comments

Product	LD%	Qty	UOM	Rate	Tax	Amount	Origin
1 Spwaste Solid Other	100	33.23	Tons				MI-OTTAWA
2 FUEL-Fuel Surchar	100		%				MI-OTTAWA
3 EVF-L-Standard Env	100	1	Lead				MI-OTTAWA
4 RCR-P-Regulatory C	100		%				MI-OTTAWA
5 SEIT-58 561 STATE	100	33.23	Tons				MI-OTTAWA

Total Tax  
Total Ticket



103420



Arthur Hills Landfill  
 700 South Avenue  
 Zealand, WI, 53090  
 (608) 438-0777

*Hudsonville*  
 City

City of Hudsonville  
 1000 1st Street  
 Hudsonville, MI 49421

Generator: *City of Hudsonville* (City of Hudsonville)  
 Material: *Household Appliances* (Household Appliances)  
 Quantity: *1000* (1000)  
 Date: *05/14/10* (05/14/10)  
 Facility: *Arthur Hills Landfill* (Arthur Hills Landfill)  
 Location: *Zealand, WI* (Zealand, WI)  
 Operator: *City of Hudsonville* (City of Hudsonville)  
 Contact: *Tom Holbert* (Tom Holbert)  
 Phone: *608-438-0777* (608-438-0777)  
 Email: *tom.holbert@hudsonville.org* (tom.holbert@hudsonville.org)

Item	Quantity	Weight	Operator	Location	Date	Signature
1. <i>Household Appliances</i>	<i>1000</i>	<i>SCALE</i>	<i>City of Hudsonville</i>	<i>Zealand, WI</i>	<i>05/14/10</i>	<i>Tom Holbert</i>
2. <i>Household Appliances</i>	<i>1000</i>	<i>SCALE</i>	<i>City of Hudsonville</i>	<i>Zealand, WI</i>	<i>05/14/10</i>	<i>Tom Holbert</i>
3. <i>Household Appliances</i>	<i>1000</i>	<i>SCALE</i>	<i>City of Hudsonville</i>	<i>Zealand, WI</i>	<i>05/14/10</i>	<i>Tom Holbert</i>

Product	QTY	WT	UNIT	Rate	Tax	Amount	Signature
1. <i>Household Appliances</i>	<i>1000</i>	<i>1000</i>	<i>Tons</i>	<i>5.00</i>	<i>0.00</i>	<i>5000.00</i>	<i>Tom Holbert</i>
2. <i>Household Appliances</i>	<i>1000</i>	<i>1000</i>	<i>Tons</i>	<i>5.00</i>	<i>0.00</i>	<i>5000.00</i>	<i>Tom Holbert</i>
3. <i>Household Appliances</i>	<i>1000</i>	<i>1000</i>	<i>Tons</i>	<i>5.00</i>	<i>0.00</i>	<i>5000.00</i>	<i>Tom Holbert</i>
4. <i>Household Appliances</i>	<i>1000</i>	<i>1000</i>	<i>Tons</i>	<i>5.00</i>	<i>0.00</i>	<i>5000.00</i>	<i>Tom Holbert</i>
5. <i>Household Appliances</i>	<i>1000</i>	<i>1000</i>	<i>Tons</i>	<i>5.00</i>	<i>0.00</i>	<i>5000.00</i>	<i>Tom Holbert</i>

*Tom Holbert*  
 Total Weight

403WM-N



Printed Name: <i>Tom Holbert</i>		Signature of Generator: <i>Tom Holbert</i>		Month: <i>05</i>	Day: <i>14</i>	Year: <i>10</i>
TRANSPORTER	17. Transporter 1 Acknowledgement of Receipt of Materials					
	Printed Name: <i>Nikona Ex.</i>	Signature: <i>Tom Holbert</i>	Month: <i>05</i>	Day: <i>14</i>	Year: <i>10</i>	
RECEIVER	18. Transporter 2 Acknowledgement of Receipt of Materials					
	Printed Name:	Signature:	Month:	Day:	Year:	
FACILITY	19. Certificate of Final Treatment/Disposal					
	I certify, on behalf of the above listed treatment facility, that to the best of my knowledge, the above-described waste was managed in compliance with all applicable laws, regulations, permits and licenses on the dates listed above.					
CITY	20. Facility Owner or Operator: Certification of receipt of non-hazardous materials covered by this manifest.					
	Printed Name: <i>Tom Holbert</i>	Signature: <i>Tom Holbert</i>	Month: <i>05</i>	Day: <i>14</i>	Year: <i>10</i>	

White- TREATMENT, STORAGE, DISPOSAL FACILITY COPY      Blue- GENERATOR #2 COPY      Yellow- GENERATOR #1 COPY  
 Pink- FACILITY USE ONLY      Gold- TRANSPORTER #1 COPY



14310743

Autumn Hills Landfill

Reprint

700 56th Avenue  
Zeeland, MI, 49464  
Ph: (616)688-5777

Ticket# 606282

Customer Name HUDSONVILLE CITY OF HUDSONVILLE Carrier NYKAMP EXCAVATING NYKAMP  
 Ticket Date 10/16/2017 Vehicle# NYKAMP9903 Volume 20.0  
 Payment Type Credit Account Container  
 Manual Ticket# Driver  
 Hauling Ticket# Check#  
 Route Billing # 0000179  
 State Waste Code Gen EPA ID  
 Manifest 558366  
 Destination Grid  
 PD  
 Profile 101300M1 (RESIDENTIAL STREET SWEEPINGS)  
 Generator 129-CITYOFHUDSONVILLE5713BAL3 CITY OF HUDSONVILLE

Time	Scale	Operator	Inbound	Gross	89000 1b*
In 10/16/2017 12:04:56	SCALE1	SLenhart		Tare	35180 1b
Out 10/16/2017 12:05:23	SCALE1	SLenhart		Net	53820 1b
		* Manual Weight		Tons	26.91

Comments weighing out

Product	LDX	Qty	UCM	Rate	Tax	Amount	Origin
1 Spwaste Solid Oth- 100		26.91	Tons				MI-OTTAWA
2 FUEL-Fuel Surcharg 100			%				MI-OTTAWA
3 EVF-L-Standard Env 100		1	Load				MI-OTTAWA
4 RCR-P-Regulatory 100			%				MI-OTTAWA
5 561T-SB 561 STATE 100		26.91	Tons				MI-OTTAWA

403WM-N



Total Tax  
Total Ticket

R A N S P O R T E R	17. Transporter 1 Acknowledgement of Receipt of Materials		Printed Name <i>Tom Halbert</i>			Signature <i>Tom Halbert</i>			Month	Day	Year
	18. Transporter 2 Acknowledgement of Receipt of Materials		Printed Name			Signature			Month	Day	Year
F A C I L I T Y	19. Certificate of Final Treatment/Disposal I certify, on behalf of the above listed treatment facility, that to the best of my knowledge, the above-described waste was managed in compliance with all applicable laws, regulations, permits and licenses on the dates listed above.										
	20. Facility Owner or Operator: Certification of receipt of non-hazardous materials covered by this manifest.										
	Printed Name <i>Sheila Lambert</i>			Signature <i>Sheila Lambert</i>			Month 10	Day 16	Year 17		

White- TREATMENT, STORAGE, DISPOSAL FACILITY COPY

Blue- GENERATOR #2 COPY

Yellow- GENERATOR #1 COPY

Pink- FACILITY USE ONLY

Gold- TRANSPORTER #1 COPY



14312361

Ontario Hills Landfill

Original

700 35th Avenue  
 Ferndale, MI, 48464  
 PH: 5816.1AAA 5:77

Ticket# 501771

Customer Name HUDSONVILLE CITY OF HUDSONVILLE Carrier NYKAMP TRUCKING  
 Ticket Date 11/22/2017 Vehicle# NYKAMP2 Volume 20.0  
 Payment Type Credit Account Container  
 Manual Ticket# Driver  
 Hauling Ticket# Check#  
 Route Billing # 0000179  
 State Waste Code Gen EPA ID  
 Manifest 555367  
 Destination  
 CG  
 Profile 10130011 (RESIDENTIAL STREET SWEEPINGS)  
 Generator 100 CITY OF HUDSONVILLE 7130015 CITY OF HUDSONVILLE

Time	Scale	Operator	Inbound	Gross	1b
In 11/22/2017 15:27:50	SCALE1	jeandee		Tare	33500 1b
Out 11/20/2017 15:00:50		jeandee		Net	28120 1b
				Tons	14.06

Product	UOM	Qty	Rate	Tax	Amount	Origin
Concrete Solid Gth	100	14.06	Tons			MI-OTTAWA
RED Fuel Oil	100					MI-OTTAWA
CVF 1-Standard Fuel	100					MI-OTTAWA
RED Fuel Oil	100					MI-OTTAWA
RED FUEL OIL STATE	100	14.06	Tons			MI-OTTAWA

403WM-N

Total Tax  
 Total Ticket

R A N S P O R T E R	17. Transporter 1 Acknowledgement of Receipt of Materials		Month	Day	Year
	Printed Name <i>Stacy Thiel</i>	Signature <i>[Signature]</i>			
F A C I L I T Y	18. Transporter 2 Acknowledgement of Receipt of Materials		Month	Day	Year
	Printed Name	Signature			
19. Certificate of Final Treatment/Disposal I certify, on behalf of the above listed treatment facility, that to the best of my knowledge, the above-described waste was managed in compliance with all applicable laws, regulations, permits and licenses on the dates listed above.					
20. Facility Owner or Operator: Certification of receipt of non-hazardous materials covered by this manifest.					
	Printed Name <i>[Signature]</i>	Signature <i>[Signature]</i>	Month <i>11</i>	Day <i>27</i>	Year <i>17</i>

White- TREATMENT, STORAGE, DISPOSAL FACILITY COPY      Blue- GENERATOR #2 COPY      Yellow- GENERATOR #1 COPY  
 Pink- FACILITY USE ONLY      Gold- TRANSPORTER #1 COPY



Autumn Hills Landfill 14312944

Original

799 56th Avenue  
Island, NJ, 09464  
PH: (616) 588-9777

Ticket# 611758

Customer Name HUDSONVILLE CITY OF HUDSON Carrier NYKAMP TRUCKING  
 Ticket Date 11/22/2017 Vehicle# NYKAMP3 Volume 20.0  
 Payment Type Credit Account Container  
 Manual Ticket# Driver  
 Hauling Ticket# Check#  
 Route Billing # 0000170  
 State Waste Code Gen EPA ID  
 Manifest 859358  
 Destination Grid  
 EQ  
 Profile (013000) (RESIDENTIAL STREET SWEEPINGS)  
 Generator (89-CITYOFHUDSONVILLE571380)S CITY OF HUDSONVILLE

Time	Scale	Operator	Inbound	Gross
In 11/22/2017 14:31:31	SCALE1	juandam		67400 lb
Out 11/22/2017 14:38:53	SCALE1	juandam		33500 lb
				Net 33900 lb
				Tons 15.99

Comments

Product	Qty	Unit	Rate	Tax	Amount	Origin
1 Spwaste Solid Mth	16.99	Tons				RI-OTTAWA
2 FUEL Diesel Surcharg		%				RI-OTTAWA
3 EVF-L-Standard Env		Load				RI-OTTAWA
4 PCR-P-Regulatory C		%				RI-OTTAWA
5 56LT SB 361 STATE	16.99	Tons				RI-OTTAWA

Total Tax  
Total Ticket

403WM-N

Driver's Signature



E R	Signature	Month	Day	Year		
	11/22/17	11	22	17		
F A C I L I T Y	19. Certificate of Final Treatment/Disposal					
	I certify, on behalf of the above listed treatment facility, that to the best of my knowledge, the above-described waste was managed in compliance with all applicable laws, regulations, permits, and licenses on the dates listed above.					
20. Facility Owner or Operator: Certification of receipt of non-hazardous materials covered by this manifest.						
Printed Name		Signature		Month	Day	Year
William		ju		11	22	17

White- TREATMENT, STORAGE, DISPOSAL FACILITY COPY

Blue- GENERATOR #2 COPY

Yellow- GENERATOR #1 COPY

Pink- FACILITY USE ONLY

Gold- TRANSPORTER #1 COPY

# 2017 Focus Group Report for the NPDES MS4 Public Education Plan in the Lower Grand River Watershed

---

December 2017

Grand Valley Metropolitan Council



## Introduction

A focus group was held on December 18, 2017 as part of the compliance activities associated with the National Pollution Discharge Elimination System (NPDES) Stormwater Regulations watershed-based permit for communities in the Lower Grand River Watershed (LGRW). The focus group served as an evaluation tool for the LGRW Public Education Plan (PEP), an integral part of the NPDES Municipal Separate Storm Sewer System (MS4) permit. In 2003, twenty three entities made up of county, city, village, township, university, and local school districts collaborated under the guidance of Grand Valley Metropolitan Council (GVMC) to apply for a watershed-based stormwater permits. The Lower Grand River Organization of Watersheds (LGROW) was officially formed as an agency of GVMC in 2009 to coordinate the implementation of the permits and provide basin-wide oversight, conduct watershed-wide initiatives, and prioritize water quality concerns.

The PEP was created for the participating communities in Kent, Ottawa, and Muskegon Counties and is intended to educate the public on stormwater pollution reduction. Successful implementation of the PEP will form partnerships with agencies and organizations that have existing programs and use educational materials and strategies familiar and relevant to the area residents. LGROW is the mechanism used to promote PEP programs and materials.

The unique purpose of the public education portion of the NPDES MS4 Stormwater Regulations is to increase the awareness of watershed residents that their everyday activities can contribute pollutants to their community's water resources. Most citizens recognize the recreational and aesthetic benefits they receive from water, and also recognize that water quality degradation is a serious concern in the Great Lakes Region. Most people, however, have not made the connection that significant pollution is generated from their normal everyday actions, and not simply from large commercial and industrial sources.

The advantage of this regional watershed-based initiative is the cooperation and resource sharing that is developed between the participating communities. Implementing a successful PEP takes funding and preparation time that one community may find impossible to do alone. However, when coordination develops between many communities in the watershed, these resources can be shared, and a larger audience can be reached at a lesser cost per contributing community. Since the overall aim is to encourage pollution prevention by coordinating a regional effort, it makes sense to pool all available resources and delegate tasks to the communities that will be the most efficient at accomplishing their responsibilities.

The last focus group held to evaluate the PEP was in 2009 at Fishbeck, Thompson, Carr & Huber (FTC&H) in Grand Rapids. The purpose of the focus group was to determine changes in the awareness, education, and behavior of the public as a result of stormwater education efforts in 2008 and 2009. Results of that session were used by GVMC and the LGROW Public Engagement Committee to further enhance the goals, objectives, and deliverables of the MS4 program.

The 2017 focus group was held at the offices of GVMC with the purpose to determine changes in the awareness, education, and behavior of the public as a result of stormwater education efforts since 2009.



In this report the results of the focus group will be evaluated, and recommendations given by participants will be used to edit and update the current LGRW MS4 PEP.

## Methods

Focus group participants were nominated by local units of government that maintain MS4 permits. Each participating local unit of government was asked to submit two potential participants that meet the following criteria:

1. The nominees must live in Kent or Ottawa Counties, specifically in the Lower Grand River Watershed, preferably in the community they are representing
2. The individuals do not manage or have direct involvement with your community's MS4 Permit
3. The nominees have had the potential to encounter LGROW deliverables (examples: events, educational outreach, brochures or fliers, LGROW website or Facebook page)

GVMC staff administered the 1.5 hour long focus group session on December 18, 2017. Twelve invited individuals were present, representing Kent and Ottawa Counties. Eleven of the 23 municipalities that GVMC works with regarding MS4 permits were represented. There was a diverse demographic represented among the group.

## Focus Group Dialogue

All participants were asked to fill out the following questionnaire before discussion began:

Table 1 – Questionnaire
1. Name?
2. Affiliation or workplace?
3. What community (city, township, or village) do you live in?
4. What local parks do you most often go to?
5. What community do you work in?
6. What is the zip code where you live?

The results of this questionnaire indicated that all twelve participants live in the Lower Grand River Watershed and subwatersheds of the Lower Grand (Plaster Creek, Lower Rogue, Indian Mill Creek, and Spring Lake). Half of the participants worked for the municipality that they were representing for the focus group, although only one of those six work directly to manage their municipality's MS4 permit.

Discussion began with introductions of everyone present and an ice breaker question. The conversation followed six dialogue questions led by GVMC. The dialogue questions were as follows:

Table 2 – 2017 Dialogue Questions
1. What do you know about LGROW?
2. What LGROW information have you seen, heard, or read?
3. Did the message (that you have seen, heard, or read) influence you? If so, how?
4. Have you seen any stormwater or pollution prevention messaging at your workplace? Who was the message from? (LGROW, employer, other org.)
5. How could LGROW project deliverables be improved?
6. Where and how do you get information on community activities?

**Question #1: What do you know about LGROW?**

In all correspondence with participants prior to the focus group, the words ‘Lower Grand River Organization of Watersheds’ were not used. This was in order to determine the reach of the organization. When asked what they knew about LGROW, participants could not specifically spell out what LGROW stands for, but did display knowledge of watershed concepts and understand that the organization had something to do with watershed protection. One participant identified LGROW as the Lower Grand River Association of Watersheds and correctly described it as “a watershed partner for the larger area.” Once told what LGROW stood for, participants were able to identify events and projects that LGROW partners and participates in, such as the Mayor’s Grand River Cleanup (led by the West Michigan Environmental Action Council, WMEAC), Basin Buddy program and Stormwater Oversight Commission (City of Grand Rapids), MS4 permit management (GVMC/LGROW) and pet waste pledges (LGROW).

After topics for Question #1 were exhausted, GVMC staff explained the purpose of this focus group as it relates to the MS4 permitting process and explained the history of LGROW.

**Question #2: What LGROW information have you seen, heard, or read?**

The purpose of this question was to learn which materials LGROW had successfully administered to the communities. Some participants mentioned school activities, rain barrel workshops, and tours/events at breweries. Others described activities that their individual communities completed as part of MS4 compliance, including displays at city hall, e-newsletters, no dumping signs on catch basins, and touch-a-truck events where the DPW conducts outreach. Representatives from Grand Haven discussed their community’s work with schools focusing on source water protection and recognized materials with LGROW’s older “Keep it Pure: Yours to Protect” messaging. One participant was familiar with the LGROW Spring Forum and encouraged others to attend.

Participants wondered if LGROW ran a Master Rain Gardener program and asked about LGROW’s connection to WMEAC and to Plaster Creek Stewards. The only LGROW-specific information that participants were able to relay was storm drain markers and pet waste signs.

Discussion for this question also raised participant concerns regarding combined sewer overflow (CSO) that reaches the Lower Grand River from upstream communities and its local effects. Participants also questioned if there would be opportunity for LGROW to do outreach concerning PFAS drinking water contamination.

All participants received re-usable LGROW tote bags that contained LGROW promotional and public outreach materials. GVMC staff also presented a power point presentation that contained pictures of other LGROW materials that were used in the past, materials that could not fit into the tote bags (ex: storm drain stencils), and pictures from events or festivals that LGROW has been present at.

### **Question #3: Did the message (that you have seen, heard, or read) influence you? If so, how?**

The discussion regarding Question #3 didn't focus on how the stormwater messages changed behavior in participants, but instead focused on the content of messages. Participants did indicate that they had seen 'Entering the [Lower Grand River] Watershed' signs, but discussion did not cover how that information affected their behavior. Most participants agreed that placing these signs at watershed boundaries is better than only along the stream, but one participant thought the signs were not useful because people ignore them on busy streets.

Storm drain markings were discussed at length, and the general group consensus was that storm drain markers are good to have. However, the way that the storm drains are marked can affect the purpose of the marking. For example, the group seemed to be in agreement that the circular LGROW drain markers are hard to read, and therefore the message they are trying to convey (no dumping, drains to local waterway), gets lost. Also, if all drain markers are in English, and they are used in a neighborhood that isn't predominately native English speakers, the message gets lost. Excellent points were made by focus group participants asking about LGROW's outreach in different languages, and approaching citizen perspectives from different cultural point of views. If someone is from a culture where it is common practice to dump things down the storm drain, they may need different educational messages than those who understand how local stormwater infrastructure works.

### **Question #4: Have you seen any stormwater or pollution prevention messaging at your workplace? Who was the message from (LGROW, employer, other org.)?**

One participant shared that unless you are working for a DPW directly with the stormwater permit, one would not receive official stormwater training. However, in that community, there is stormwater education provided to employees, especially if their daily job encounters stormwater management best management practices (BMPs). The general consensus from the focus group was that participants hadn't seen much information about stormwater in their workplace, or couldn't specifically recall any stormwater messaging at work.

### **Question #5: How could LGROW project deliverables be improved?**

Participants offered helpful and realistic ways for deliverables to be achieved, how to improve messaging and improved methods of outreach. One suggestion was to connect watershed education with drinking water quality. Citizens are often more concerned with the quality of drinking water than surface water and stormwater runoff. If a connection between stormwater and drinking water can be made, citizens may become more invested in stormwater messaging.

There were many ideas about the methods used to reach people. The general consensus was that LGROW needs a broader reach and more people need to be aware of stormwater messaging. Participants mentioned that they would like to see messages on billboards, on physical print materials such as newspapers or magazines, and/or in promotional videos that offer watershed education messaging.

New audiences and topics for outreach were also suggested, including educating residents of apartment complexes on their current impacts as well as how they can manage future properties, and educating owners of LEED buildings on maintenance of their green infrastructure.

One participant mentioned that communication with local governments is crucial. For example, LGROW has been encouraging people to wash their car on their grass (or at a commercial car wash) in order to avoid runoff polluted with soap and automobile fluids entering the storm sewer system through storm drains. However, it was mentioned that it is against some city codes to park your vehicle on the lawn and residents can get ticketed.

#### **Question #6: Where and how do you get information on community activities?**

Many participants received community information from the internet. Internet and social media sites mentioned included: Facebook, Instagram, Nextdoor, municipal websites, Experience Grand Rapids website, and Eventbrite.

Other sources include community newsletter and mailers, water bill mailers, and word of mouth. It was mentioned that word of mouth is extremely important in communities where people do not have access to the internet or smart phones. Also, participants expressed that it isn't enough to tell people about the watershed or stormwater pollution prevention, you also need to tell them why they should care about information you are presenting.

#### **Other Discussion**

GVMC staff asked for other suggestions for new LGROW promotional materials and giveaways that would help promote stormwater messaging. New ideas from the focus group participants included: phone accessories such as PopSockets, water bottle stickers to get free water refills (similar to a program Art Prize has used in Grand Rapids), conducting storm drain marking events with private neighborhood associations who would not otherwise have their drains marked by a municipality, pencils for kids at schools, politicians spreading the word when they go door-to-door during campaign season, and attending farmers markets to partner with farmers who could hand out information on LGROW's behalf.

#### **Results**

This focus group ended up being a very educational experience for its participants while providing valuable feedback on LGROW outreach activities. The mixed demographic of participants and the number of MS4 communities participating provided a fairly diverse view of LGROW's reach into the watershed, and participants shared many ideas to improve LGROW messaging.

### *New Target Audiences*

- *Municipal employees*
- *Adults through schoolchildren*
- *People living in apartment complexes*
- *LEED certified building owners*
- *Farmers*

Much of the focus group time was spent explaining to participants what LGROW does and why, instead of gaining insight on how to improve specific LGROW messages and materials. The fact that many of the participants were employees of municipalities participating in the MS4 program suggests that LGROW may need to emphasize improvement of outreach to these communities in order to extend our reach into the wider watershed community. Since these communities are meant to be assisting in spreading LGROW's stormwater messaging and materials, it is important that their employees understand LGROW's work. More stormwater messaging needs to be available to municipality employees regarding that municipality's stormwater permit and program. Focus group participants were not opposed to learning more about their municipality's program, instead they seemed genuinely interested to know more about it and seemed willing to share that information with others. LGROW needs to find a more effective way for municipalities to share stormwater program information with municipality employees.

Frequently, LGROW focuses its attention on educating school children. It was suggested that information could be given to children at school for them to take home to their parents. Adults may become more invested in the messaging if it comes to them from their children. One participant suggested that LGROW spends a lot of time educating children, and should focus on targeting its messages to adults. An effective way to reach many adults at one time would be to expand messaging to apartment complexes. After this comment was made, other participants agreed, and suggested that private home associations, or subdivisions be brought into the loop in order to reach many adults who have a vested interest in the watershed, but aren't receiving messaging from another source. Other target audiences suggested were the owners of local LEED certified buildings. It is a good idea to reach out to these owners because they may need education on how to maintain their green infrastructure (GI).

### *Reworking Messages*

- *Translating materials in to the language of the neighborhood*
- *Address 'why' citizens need to know the message presented*
- *Simplify messages*

Participants stressed the importance of materials being available in the language of citizens that LGROW is wishing to serve. There is a large Hispanic population in West Michigan, and in order to reach those people, materials in Spanish should be available. It is also important to take into consideration cultural values because many people may not understand how their local stormwater infrastructure works. While educating people on how the storm sewer works, focus group participants also mentioned that it

is important to explain to people why LGROW messages are important and how stormwater affects their everyday life. Messages should also be simple, in order to ensure understanding and avoid confusion.

#### *Delivery Mechanisms*

- *Placement of watershed information (placement of 'Entering the Watershed' signs, more signs for GI)*
- *Tours of municipalities and events at breweries*
- *Word of mouth*
- *Presence at festivals*
- *Advertising in churches in the watershed*

There was excellent discussion by the group about ways that they would like to receive more information regarding stormwater messaging, and the places where they thought that messaging would be well received in the watershed.

'You are now entering the [Lower Grand River] Watershed' signs were deemed helpful by participants. Only one participant expressed that these signs are not helpful to citizens, because if you drive past them frequently in your neighborhood, you quickly become immune and ignore them. There was discussion about the placement of the watershed signs, and the group seemed to agree that it is helpful to have the signs placed at watershed boundaries, not directly at river or stream crossings. However, it was suggested that if signs were placed along bike or walking trails, there would be an opportunity for people to stop and read the sign and any other information provided with it. It is not practical for a driver of a car or passenger to read the whole sign while driving by. It was suggested that LGROW consider placing more signs in parks with watershed information, where interested parties will stop and read. Participants also noted that you might reach more people if you have a sign on a roadside versus a trail based on how busy that road or trail is.

Participants noticed that stormwater education is often given during facilities tours at municipalities, and that is a good place to get information to a captive audience. Also, many people have an interest in local breweries, so events or messaging promoted at breweries would also be successful.

Word of mouth is extremely helpful in communities for people who do not have internet access or smartphones. It was suggested that LGROW find a community leader and use them to spread educational messages.

Attending festivals is another mechanism that was suggested during the focus group, and advertising events or stormwater messaging in churches was also mentioned. Festivals and churches usually contain many local leaders, and this would be a great way to get active community members involved.

Key take-aways for LGROW from the focus group are summarized in the following table:

How LGROW messages can be improved	
New Target Audiences	<ul style="list-style-type: none"> <li>• <i>Municipal employees</i></li> <li>• <i>Adults through schoolchildren</i></li> <li>• <i>People living in apartment complexes</i></li> <li>• <i>LEED certified building owners</i></li> <li>• <i>Farmers</i></li> </ul>
Reworking Messages	<ul style="list-style-type: none"> <li>• <i>Translating materials in to the language of the neighborhood</i></li> <li>• <i>Address 'why' citizens need to know the message presented</i></li> <li>• <i>Simplify messages</i></li> </ul>
Delivery Mechanisms	<ul style="list-style-type: none"> <li>• <i>Placement of watershed information (placement of 'Entering the Watershed' signs, more signs for GI)</i></li> <li>• <i>Tours of municipalities and events at breweries</i></li> <li>• <i>Word of mouth</i></li> <li>• <i>Presence at festivals</i></li> <li>• <i>Advertising in churches in the watershed</i></li> </ul>

### **Future Action Steps**

Using the information provided from the focus group, the PEP for the LGRW communities can be edited to better serve the public. The challenges, successes, and recommendations communicated in this report will be evaluated to modify the PEP as needed. The updated PEP will result in a more effective public outreach campaign to reduce stormwater pollution and raise MS4 awareness during the next permit cycle.

# Photos

