

MS4: City of Grand Haven	
Stormwater Structural Control Inventory:	
Facilities Inventory	
Quantity:	Type:
65	Catch basins
0	Constructed wetlands
1	Detention basins
18	Infiltration basins and trenches
0	Oil/water separators
0	Porous pavement
0	Pump Stations
0	Rain gardens
0	Secondary containment
0	Underground storage vaults or tanks
4	Vegetated swales
1	Other structural storm water controls (See Notes)
MS4	
Quantity:	Type:
1547	Catch basins
0	Constructed wetlands
1	Detention basins
200	Infiltration basins and trenches
2	Oil/water separators
0	Porous pavement
0	Pump Stations
0	Rain gardens
0	Secondary containment
2	Underground storage vaults or tanks
4	Vegetated swales
1	Other structural storm water controls (See Notes)

Facilities Inventory		Municipal Operations and Maintenance							
Pollutant Discharge Potential	Facility Name	Road, Parking Lot Bridge & Sidewalk Maintenance	ROW & Vegetated Property Maintenance	Unpaved Road Maintenance	Cold Weather operations	Fleet Maintenance	Solid Waste Handling and Disposal	Materials Storage	Spill Response and Prevention
low	Lake Michigan Auto	x	x						
low	Bookman	x	x						
low	East End Park	x	x						
low	City Hall	x	x						
low	Public Safety Small	x							
low	Sluka	x							
low	Cemetery	x	x						
high	City Garage	x	x		x	x	x	x	x
low	Farmers Market Parking Lot	x	x						
low	Chinook Pier Parking Lot	x	x						
low	Harbor Front	x	x						
low	Tip-A-Few	x	x						
low	Zephyr	x	x						
low	VFW	x	x						
low	Community Center Upper	x	x						
low	Community Center Lower	x	x						
low	Public Safety	x	x						
low	Franking & 3rd	x	x						
low	Franking & 2nd	x	x						
low	Franking & 1st	x	x						
low	Frame & Mat	x	x						
low	Bekins	x	x						

Municipal Facility Stormwater Structural Control Inventory Tracking Sheet

Facility Information:	
Community Name:	City of Grand Haven
Facility Name:	Lake Michigan Auto
Facility Address:	N 7th
Receiving Water/ Outfall ID:	MDOT CGH2112
Facility Type:	Public Parking Lots
Secondary Facility Type (Optional) :	
Stormwater Structural Control Inventory:	
Quantity:	Type:
1	Catch basins
0	Constructed wetlands
0	Detention basins
0	Infiltration basins and trenches
0	Oil/water separators
0	Porous pavement
0	Pump Stations
0	Rain gardens
0	Secondary containment
0	Underground storage vaults or tanks
0	Vegetated swales
0	Other structural storm water controls (See Notes)
Completed on:	30-Jan-15
Facility Map Location:	Below

Notes: MDOT CGH2112



Instructions: Complete all gray areas on the form. If your facility can be identified as more than one type in the drop down menu, use the optional secondary field, if you need 3 or more types, add them to the notes. Provide the number of each type of stormwater structural control at the facility that discharges stormwater to waters of the state.

**Municipal Facility
Stormwater Structural Control Inventory
Tracking Sheet**

Facility Information:	
Community Name:	City of Grand Haven
Facility Name:	Bookman
Facility Address:	700 Block of Washington
Receiving Water/ Outfall ID:	MDOT CGH2112
Facility Type:	Public Parking Lots
Secondary Facility Type (Optional) :	
Stormwater Structural Control Inventory:	
Quantity:	Type:
1	Catch basins
0	Constructed wetlands
0	Detention basins
0	Infiltration basins and trenches
0	Oil/water separators
0	Porous pavement
0	Pump Stations
0	Rain gardens
0	Secondary containment
0	Underground storage vaults or tanks
0	Vegetated swales
0	Other structural storm water controls (See Notes)
Completed on:	30-Jan-15
Facility Map Location:	Below

Notes: MDOT CGH2112

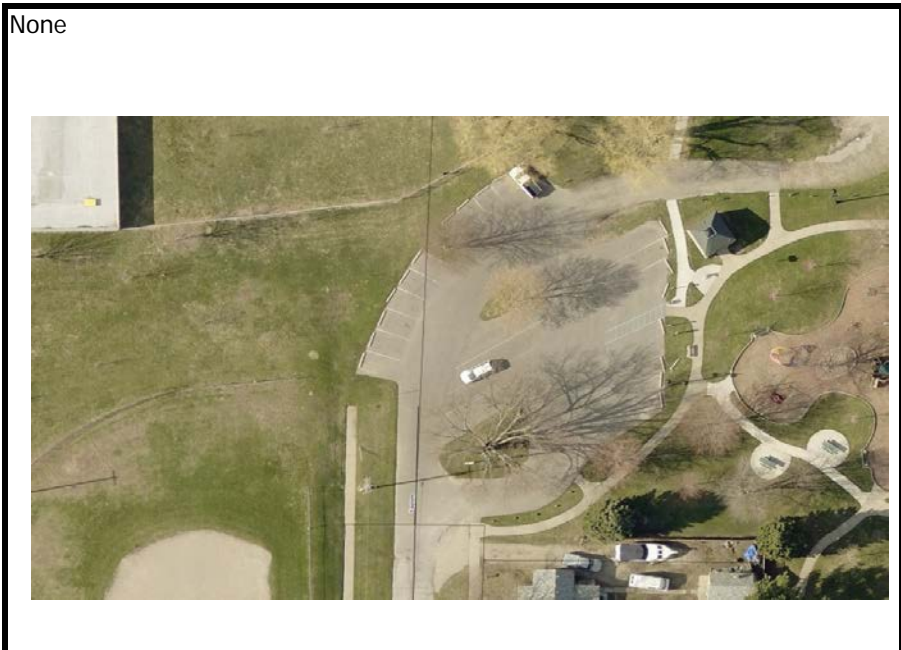


Instructions: Complete all gray areas on the form. If your facility can be identified as more than one type in the drop down menu, use the optional secondary field, if you need 3 or more types, add them to the notes. Provide the number of each type of stormwater structural control at the facility that discharges stormwater to waters of the state.

Municipal Facility Stormwater Structural Control Inventory Tracking Sheet

Facility Information:	
Community Name:	City of Grand Haven
Facility Name:	East End Park
Facility Address:	Franklin & Eastern
Receiving Water/ Outfall ID:	None
Facility Type:	Public Parking Lots
Secondary Facility Type (Optional) :	
Stormwater Structural Control Inventory:	
Quantity:	Type:
0	Catch basins
0	Constructed wetlands
0	Detention basins
0	Infiltration basins and trenches
0	Oil/water separators
0	Porous pavement
0	Pump Stations
0	Rain gardens
0	Secondary containment
0	Underground storage vaults or tanks
0	Vegetated swales
0	Other structural storm water controls (See Notes)
Completed on:	30-Jan-15
Facility Map Location:	Below

Notes: None



Instructions: Complete all gray areas on the form. If your facility can be identified as more than one type in the drop down menu, use the optional secondary field, if you need 3 or more types, add them to the notes. Provide the number of each type of stormwater structural control at the facility that discharges stormwater to waters of the state.

**Municipal Facility
Stormwater Structural Control Inventory
Tracking Sheet**

Facility Information:	
Community Name:	City of Grand Haven
Facility Name:	City Hall
Facility Address:	519 Washington
Receiving Water/ Outfall ID:	CGH2024
Facility Type:	Public Parking Lots
Secondary Facility Type (Optional) :	
Stormwater Structural Control Inventory:	
Quantity:	Type:
5	Catch basins
0	Constructed wetlands
0	Detention basins
0	Infiltration basins and trenches
0	Oil/water separators
0	Porous pavement
0	Pump Stations
0	Rain gardens
0	Secondary containment
0	Underground storage vaults or tanks
0	Vegetated swales
0	Other structural storm water controls (See Notes)
Completed on:	30-Jan-15
Facility Map Location:	Below

Notes: CHG2024



Instructions: Complete all gray areas on the form. If your facility can be identified as more than one type in the drop down menu, use the optional secondary field. If you need 2 or more types, add them to the notes. Provide the number of each type of stormwater structural control at

**Municipal Facility
Stormwater Structural Control Inventory
Tracking Sheet**

Facility Information:	
Community Name:	City of Grand Haven
Facility Name:	Public Safety Small
Facility Address:	
Receiving Water/ Outfall ID:	MDOT CGH2112
Facility Type:	Public Parking Lots
Secondary Facility Type (Optional) :	
Stormwater Structural Control Inventory:	
Quantity:	Type:
1	Catch basins
0	Constructed wetlands
0	Detention basins
0	Infiltration basins and trenches
0	Oil/water separators
0	Porous pavement
0	Pump Stations
0	Rain gardens
0	Secondary containment
0	Underground storage vaults or tanks
0	Vegetated swales
0	Other structural storm water controls (See Notes)
Completed on:	30-Jan-15
Facility Map Location:	Below

Notes: MDOT CGH2112

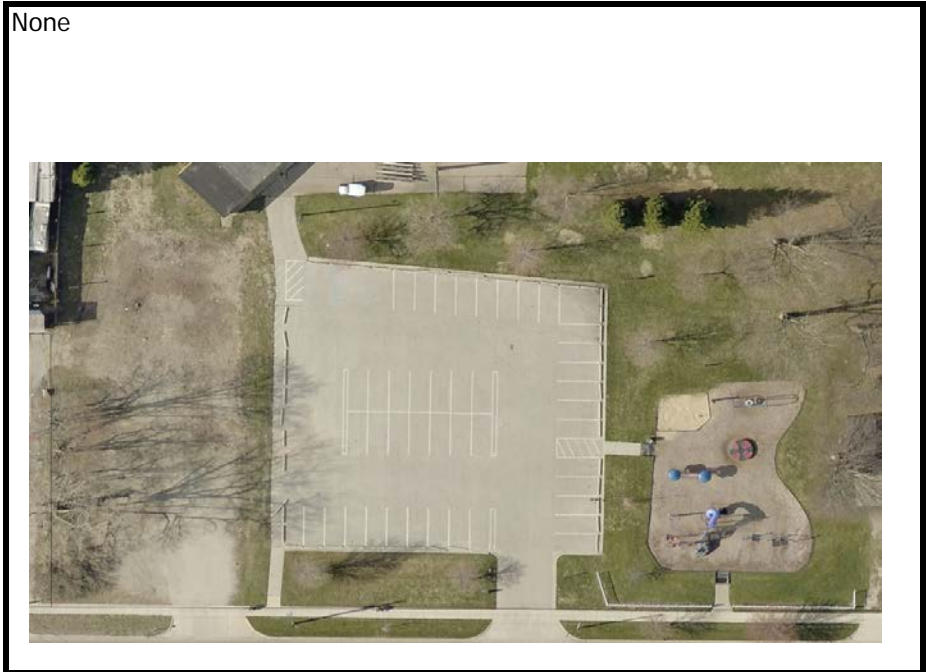


Instructions: Complete all gray areas on the form. If your facility can be identified as more than one type in the drop down menu, use the optional secondary field. If you need 2 or more types, add them to the notes. Provide the number of each type of stormwater structural control at

**Municipal Facility
Stormwater Structural Control Inventory
Tracking Sheet**

Facility Information:	
Community Name:	City of Grand Haven
Facility Name:	Sluka
Facility Address:	1500 blk of Waverly
Receiving Water/ Outfall ID:	None
Facility Type:	Public Parking Lots
Secondary Facility Type (Optional) :	
Stormwater Structural Control Inventory:	
Quantity:	Type:
1	Catch basins
0	Constructed wetlands
0	Detention basins
1	Infiltration basins and trenches
0	Oil/water separators
0	Porous pavement
0	Pump Stations
0	Rain gardens
0	Secondary containment
0	Underground storage vaults or tanks
0	Vegetated swales
Rain Water Sheets Off	Other structural storm water controls (See Notes)
Completed on:	30-Jan-15
Facility Map Location:	Below

Notes: None



Instructions: Complete all gray areas on the form. If your facility can be identified as more than one type in the drop down menu, use the optional secondary field. If you need 2 or more types, add them to the notes. Provide the number of each type of stormwater structural control at

**Municipal Facility
Stormwater Structural Control Inventory
Tracking Sheet**

Facility Information:	
Community Name:	City of Grand Haven
Facility Name:	Cemetery
Facility Address:	1300 Blk of Lake
Receiving Water/ Outfall ID:	None
Facility Type:	Public Parking Lots
Secondary Facility Type (Optional) :	
Stormwater Structural Control Inventory:	
Quantity:	Type:
0	Catch basins
0	Constructed wetlands
0	Detention basins
0	Infiltration basins and trenches
0	Oil/water separators
0	Porous pavement
0	Pump Stations
0	Rain gardens
0	Secondary containment
0	Underground storage vaults or tanks
0	Vegetated swales
Rain Sheets Off	Other structural storm water controls (See Notes)
Completed on:	30-Jan-15
Facility Map Location:	Below

Notes: None



Instructions: Complete all gray areas on the form. If your facility can be identified as more than one type in the drop down menu, use the optional secondary field, if you need 3 or more types, add them to the notes. Provide the number of each type of stormwater structural control at the facility that discharges stormwater to waters of the state.

Municipal Facility Stormwater Structural Control Inventory Tracking Sheet

Facility Information:	
Community Name:	City of Grand Haven
Facility Name:	City Garage
Facility Address:	1120 Jackson
Receiving Water/ Outfall ID:	CGH2108
Facility Type:	Public Parking Lots
Secondary Facility Type (Optional) :	
Stormwater Structural Control Inventory:	
Quantity:	Type:
4	Catch basins
0	Constructed wetlands
0	Detention basins
0	Infiltration basins and trenches
0	Oil/water separators
0	Porous pavement
0	Pump Stations
0	Rain gardens
0	Secondary containment
0	Underground storage vaults or tanks
4	Vegetated swales
Stormceptor	Other structural storm water controls (See Notes)
Completed on:	30-Jan-15
Facility Map Location:	Below

Notes: CGH2108



Instructions: Complete all gray areas on the form. If your facility can be identified as more than one type in the drop down menu, use the optional secondary field, if you need 3 or more types, add them to the notes. Provide the number of each type of stormwater structural control at the facility that discharges stormwater to waters of the state.

**Municipal Facility
Stormwater Structural Control Inventory
Tracking Sheet**

Facility Information:	
Community Name:	City of Grand Haven
Facility Name:	Farmers Market Parking lot
Facility Address:	301 N Harbor
Receiving Water/ Outfall ID:	GHC2025
Facility Type:	Public Parking Lots
Secondary Facility Type (Optional) :	
Stormwater Structural Control Inventory:	
Quantity:	Type:
	4 Catch basins
	0 Constructed wetlands
	0 Detention basins
	2 Infiltration basins and trenches
	0 Oil/water separators
	0 Porous pavement
	0 Pump Stations
	0 Rain gardens
	0 Secondary containment
	0 Underground storage vaults or tanks
	0 Vegetated swales
	0 Other structural storm water controls (See Notes)
Completed on:	28-Jan-15
Facility Map Location:	Below

Notes: GHC2025? CGH2025



Instructions: Complete all gray areas on the form. If your facility can be identified as more than one type in the drop down menu, use the optional secondary field, if you need 3 or more types, add them to the notes. Provide the number of each type of stormwater structural control at the facility that discharges stormwater to waters of the state.

**Municipal Facility
Stormwater Structural Control Inventory
Tracking Sheet**

Facility Information:	
Community Name:	City of Grand Haven
Facility Name:	Chinook Pier Parking Lot
Facility Address:	301 N Harbor
Receiving Water/ Outfall ID:	CGH2003
Facility Type:	Public Parking Lots
Secondary Facility Type (Optional) :	
Stormwater Structural Control Inventory:	
Quantity:	Type:
5	Catch basins
0	Constructed wetlands
0	Detention basins
0	Infiltration basins and trenches
0	Oil/water separators
0	Porous pavement
0	Pump Stations
0	Rain gardens
0	Secondary containment
0	Underground storage vaults or tanks
0	Vegetated swales
0	Other structural storm water controls (See Notes)
Completed on:	29-Jan-15
Facility Map Location:	Below

Notes: CGH2003



Instructions: Complete all gray areas on the form. If your facility can be identified as more than one type in the drop down menu, use the optional secondary field, if you need 3 or more types, add them to the notes. Provide the number of each type of stormwater structural control at the facility that discharges stormwater to waters of the state.

**Municipal Facility
Stormwater Structural Control Inventory
Tracking Sheet**

Facility Information:	
Community Name:	City of Grand Haven
Facility Name:	Harbor Front Parking Lot
Facility Address:	20 S Harbor
Receiving Water/ Outfall ID:	CGH2003
Facility Type:	Public Parking Lots
Secondary Facility Type (Optional) :	
Stormwater Structural Control Inventory:	
Quantity:	Type:
4	Catch basins
0	Constructed wetlands
0	Detention basins
0	Infiltration basins and trenches
0	Oil/water separators
0	Porous pavement
0	Pump Stations
0	Rain gardens
0	Secondary containment
0	Underground storage vaults or tanks
0	Vegetated swales
0	Other structural storm water controls (See Notes)
Completed on:	29-Jan-15
Facility Map Location:	Below

Notes: CGH2003



Instructions: Complete all gray areas on the form. If your facility can be identified as more than one type in the drop down menu, use the optional secondary field, if you need 3 or more types, add them to the notes. Provide the number of each type of stormwater structural control at the facility that discharges stormwater to waters of the state.

**Municipal Facility
Stormwater Structural Control Inventory
Tracking Sheet**

Facility Information:	
Community Name:	City of Grand Haven
Facility Name:	Tip-A-Few
Facility Address:	Franklin & First
Receiving Water/ Outfall ID:	CGH2024
Facility Type:	Public Parking Lots
Secondary Facility Type (Optional) :	
Stormwater Structural Control Inventory:	
Quantity:	Type:
2	Catch basins
0	Constructed wetlands
0	Detention basins
0	Infiltration basins and trenches
0	Oil/water separators
0	Porous pavement
0	Pump Stations
0	Rain gardens
0	Secondary containment
0	Underground storage vaults or tanks
0	Vegetated swales
0	Other structural storm water controls (See Notes)
Completed on:	29-Jan-15
Facility Map Location:	Below

Notes: CGH2024

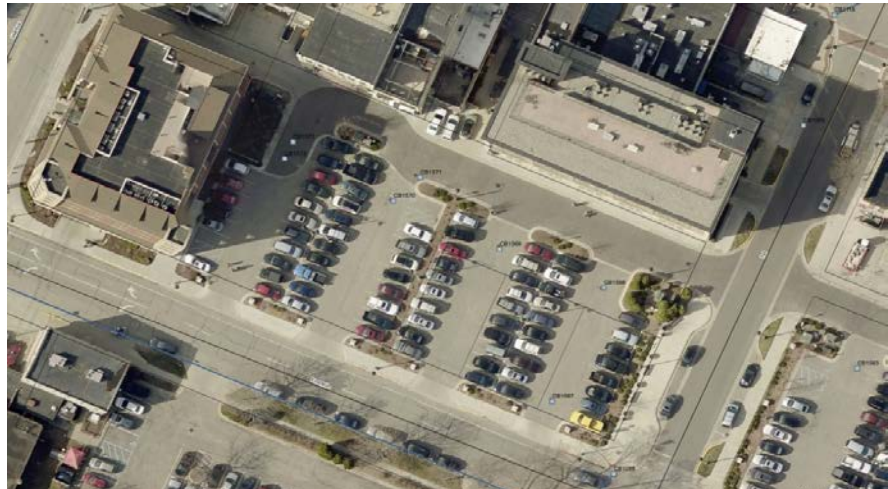


Instructions: Complete all gray areas on the form. If your facility can be identified as more than one type in the drop down menu, use the optional secondary field, if you need 3 or more types, add them to the notes. Provide the number of each type of stormwater structural control at the facility that discharges stormwater to waters of the state.

**Municipal Facility
Stormwater Structural Control Inventory
Tracking Sheet**

Facility Information:	
Community Name:	City of Grand Haven
Facility Name:	Zephyr
Facility Address:	NW corner of Franklin & First
Receiving Water/ Outfall ID:	CGH2024
Facility Type:	Public Parking Lots
Secondary Facility Type (Optional) :	
Stormwater Structural Control Inventory:	
Quantity:	Type:
7	Catch basins
0	Constructed wetlands
1	Detention basins
0	Infiltration basins and trenches
0	Oil/water separators
0	Porous pavement
0	Pump Stations
0	Rain gardens
0	Secondary containment
0	Underground storage vaults or tanks
0	Vegetated swales
0	Other structural storm water controls (See Notes)
Completed on:	29-Jan-15
Facility Map Location:	Below

Notes: CGH2024



Instructions: Complete all gray areas on the form. If you have an optional secondary field, if you need 3 or more types, add them to the notes. Provide the number of each type of stormwater structural control at the facility that discharges stormwater to waters of the state.

**Municipal Facility
Stormwater Structural Control Inventory
Tracking Sheet**

Facility Information:	
Community Name:	City of Grand Haven
Facility Name:	VFW
Facility Address:	First Street
Receiving Water/ Outfall ID:	CGH2004
Facility Type:	Public Parking Lots
Secondary Facility Type (Optional) :	
Stormwater Structural Control Inventory:	
Quantity:	Type:
3	Catch basins
0	Constructed wetlands
0	Detention basins
0	Infiltration basins and trenches
0	Oil/water separators
0	Porous pavement
0	Pump Stations
0	Rain gardens
0	Secondary containment
0	Underground storage vaults or tanks
0	Vegetated swales
0	Other structural storm water controls (See Notes)
Completed on:	29-Jan-15
Facility Map Location:	Below

Notes: CGH2004



Instructions: Complete all gray areas on the form. If your facility can be identified as more than one type in the drop down menu, use the optional secondary field, if you need 3 or more types, add them to the notes. Provide the number of each type of stormwater structural control at the facility that discharges stormwater to waters of the state.

**Municipal Facility
Stormwater Structural Control Inventory
Tracking Sheet**

Facility Information:	
Community Name:	City of Grand Haven
Facility Name:	Community Center Upper
Facility Address:	Columbus & 5th
Receiving Water/ Outfall ID:	CGH2106
Facility Type:	Public Parking Lots
Secondary Facility Type (Optional) :	
Stormwater Structural Control Inventory:	
Quantity:	Type:
2	Catch basins
0	Constructed wetlands
0	Detention basins
0	Infiltration basins and trenches
0	Oil/water separators
0	Porous pavement
0	Pump Stations
0	Rain gardens
0	Secondary containment
0	Underground storage vaults or tanks
0	Vegetated swales
0	Other structural storm water controls (See Notes)
Completed on:	29-Jan-15
Facility Map Location:	Below

Notes: CGH2106



Instructions: Complete all gray areas on the form. If your facility can be identified as more than one type in the drop down menu, use the optional secondary field, if you need 3 or more types, add them to the notes. Provide the number of each type of stormwater structural control at the facility that discharges stormwater to waters of the state.

**Municipal Facility
Stormwater Structural Control Inventory
Tracking Sheet**

Facility Information:	
Community Name:	City of Grand Haven
Facility Name:	Community Center Lower
Facility Address:	Columbus & 5th
Receiving Water/ Outfall ID:	CGH2106
Facility Type:	Public Parking Lots
Secondary Facility Type (Optional) :	
Stormwater Structural Control Inventory:	
Quantity:	Type:
3	Catch basins
0	Constructed wetlands
0	Detention basins
0	Infiltration basins and trenches
0	Oil/water separators
0	Porous pavement
0	Pump Stations
0	Rain gardens
0	Secondary containment
0	Underground storage vaults or tanks
0	Vegetated swales
0	Other structural storm water controls (See Notes)
Completed on:	29-Jan-15
Facility Map Location:	Below

Notes: CGH2106



Instructions: Complete all gray areas on the form. If your facility can be identified as more than one type in the drop-down menu, use the optional secondary field, if you need 3 or more types, add them to the notes. Provide the number of each type of stormwater structural control at the facility that discharges stormwater to waters of the state.

**Municipal Facility
Stormwater Structural Control Inventory
Tracking Sheet**

Facility Information:	
Community Name:	City of Grand Haven
Facility Name:	Public Safety
Facility Address:	Columbus & 6th
Receiving Water/ Outfall ID:	MDOT CGH2112
Facility Type:	Public Parking Lots
Secondary Facility Type (Optional) :	
Stormwater Structural Control Inventory:	
Quantity:	Type:
1	Catch basins
0	Constructed wetlands
0	Detention basins
0	Infiltration basins and trenches
0	Oil/water separators
0	Porous pavement
0	Pump Stations
0	Rain gardens
0	Secondary containment
0	Underground storage vaults or tanks
0	Vegetated swales
0	Other structural storm water controls (See Notes)
Completed on:	29-Jan-15
Facility Map Location:	Below

Notes: MDOT CGH2112



Instructions: Complete all gray areas on the form. If your facility can be identified as more than one type in the drop down menu, use the optional secondary field, if you need 3 or more types, add them to the notes. Provide the number of each type of stormwater structural control at the facility that discharges stormwater to waters of the state.

**Municipal Facility
Stormwater Structural Control Inventory
Tracking Sheet**

Facility Information:	
Community Name:	City of Grand Haven
Facility Name:	Franklin & 3rd
Facility Address:	Franklin & 3rd
Receiving Water/ Outfall ID:	CGH2024
Facility Type:	Public Parking Lots
Secondary Facility Type (Optional) :	
Stormwater Structural Control Inventory:	
Quantity:	Type:
2	Catch basins
0	Constructed wetlands
0	Detention basins
0	Infiltration basins and trenches
0	Oil/water separators
0	Porous pavement
0	Pump Stations
0	Rain gardens
0	Secondary containment
0	Underground storage vaults or tanks
0	Vegetated swales
0	Other structural storm water controls (See Notes)
Completed on:	29-Jan-15
Facility Map Location:	Below

Notes: CGH2024



Instructions: Complete all gray areas on the form. If your facility can be identified as more than one type in the drop down menu, use the optional secondary field, if you need 3 or more types, add them to the notes. Provide the number of each type of stormwater structural control at the facility that discharges stormwater to waters of the state.

**Municipal Facility
Stormwater Structural Control Inventory
Tracking Sheet**

Facility Information:	
Community Name:	City of Grand Haven
Facility Name:	Franklin & 2nd
Facility Address:	Franklin & 2nd
Receiving Water/ Outfall ID:	CGH2024
Facility Type:	Public Parking Lots
Secondary Facility Type (Optional) :	
Stormwater Structural Control Inventory:	
Quantity:	Type:
7	Catch basins
0	Constructed wetlands
0	Detention basins
7	Infiltration basins and trenches
0	Oil/water separators
0	Porous pavement
0	Pump Stations
0	Rain gardens
0	Secondary containment
0	Underground storage vaults or tanks
0	Vegetated swales
0	Other structural storm water controls (See Notes)
Completed on:	30-Jan-15
Facility Map Location:	Below

Notes: CGH2024



Instructions: Complete all gray areas on the form. If your facility can be identified as more than one type in the drop down menu, use the optional secondary field, if you need 3 or more types, add them to the notes. Provide the number of each type of stormwater structural control at the facility that discharges stormwater to waters of the state.

**Municipal Facility
Stormwater Structural Control Inventory
Tracking Sheet**

Facility Information:	
Community Name:	City of Grand Haven
Facility Name:	Franklin & 1st
Facility Address:	Franklin & 1st
Receiving Water/ Outfall ID:	CGH2024
Facility Type:	Public Parking Lots
Secondary Facility Type (Optional) :	
Stormwater Structural Control Inventory:	
Quantity:	Type:
9	Catch basins
0	Constructed wetlands
0	Detention basins
9	Infiltration basins and trenches
0	Oil/water separators
0	Porous pavement
0	Pump Stations
0	Rain gardens
0	Secondary containment
0	Underground storage vaults or tanks
0	Vegetated swales
0	Other structural storm water controls (See Notes)
Completed on:	30-Jan-15
Facility Map Location:	Below

Notes: CGH2024



Instructions: Complete all gray areas on the form. If your facility can be identified as more than one type in the drop down menu, use the optional secondary field, if you need 3 or more types, add them to the notes. Provide the number of each type of stormwater structural control at the facility that discharges stormwater to waters of the state.

**Municipal Facility
Stormwater Structural Control Inventory
Tracking Sheet**

Facility Information:	
Community Name:	City of Grand Haven
Facility Name:	Frame & Mat
Facility Address:	700 Block of Waashington
Receiving Water/ Outfall ID:	MDOT CGH2112
Facility Type:	Public Parking Lots
Secondary Facility Type (Optional) :	
Stormwater Structural Control Inventory:	
Quantity:	Type:
2	Catch basins
0	Constructed wetlands
0	Detention basins
0	Infiltration basins and trenches
0	Oil/water separators
0	Porous pavement
0	Pump Stations
0	Rain gardens
0	Secondary containment
0	Underground storage vaults or tanks
0	Vegetated swales
0	Other structural storm water controls (See Notes)
Completed on:	30-Jan-15
Facility Map Location:	Below

Notes: MDOT CGH2112

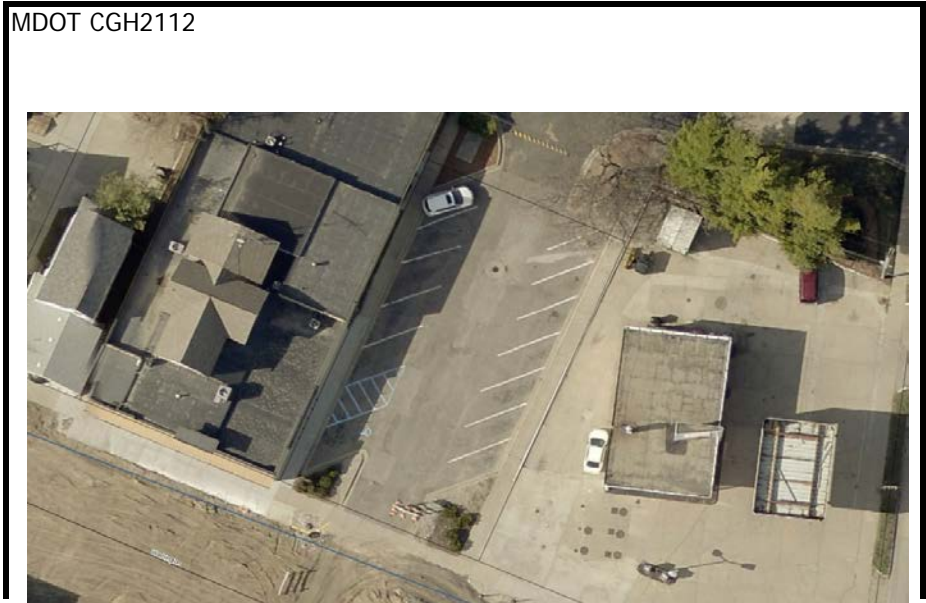


Instructions: Complete all gray areas on the form. If your facility can be identified as more than one type in the drop down menu, use the optional secondary field, if you need 3 or more types, add them to the notes. Provide the number of each type of stormwater structural control at the facility that discharges stormwater to waters of the state.

**Municipal Facility
Stormwater Structural Control Inventory
Tracking Sheet**

Facility Information:	
Community Name:	City of Grand Haven
Facility Name:	Bekins
Facility Address:	700 Block of Washington
Receiving Water/ Outfall ID:	MDOT CGH2112
Facility Type:	Public Parking Lots
Secondary Facility Type (Optional) :	
Stormwater Structural Control Inventory:	
Quantity:	Type:
1	Catch basins
0	Constructed wetlands
0	Detention basins
0	Infiltration basins and trenches
0	Oil/water separators
0	Porous pavement
0	Pump Stations
0	Rain gardens
0	Secondary containment
0	Underground storage vaults or tanks
0	Vegetated swales
0	Other structural storm water controls (See Notes)
Completed on:	30-Jan-15
Facility Map Location:	Below

Notes: MDOT CGH2112



Instructions: Complete all gray areas on the form. If you have an optional secondary field, if you need 3 or more types, add them to the notes. Provide the number of each type of stormwater structural control at the facility that discharges stormwater to waters of the state.