

APPENDIX C. CAPITAL PROJECTS

C1. LOCATIONS OVERVIEW

Figure C-1 Capital Projects NW

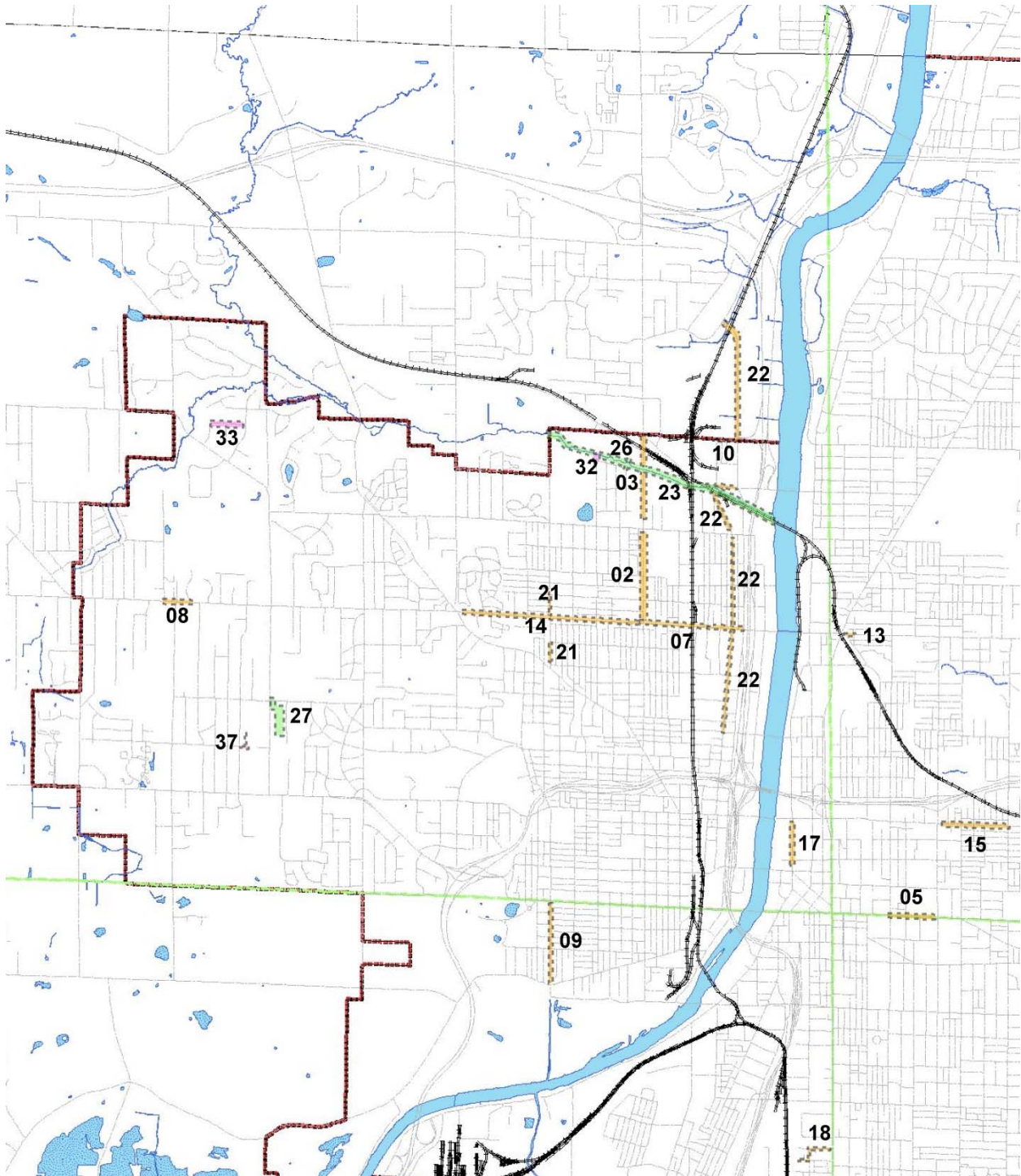


Figure C-2 Capital Projects NW

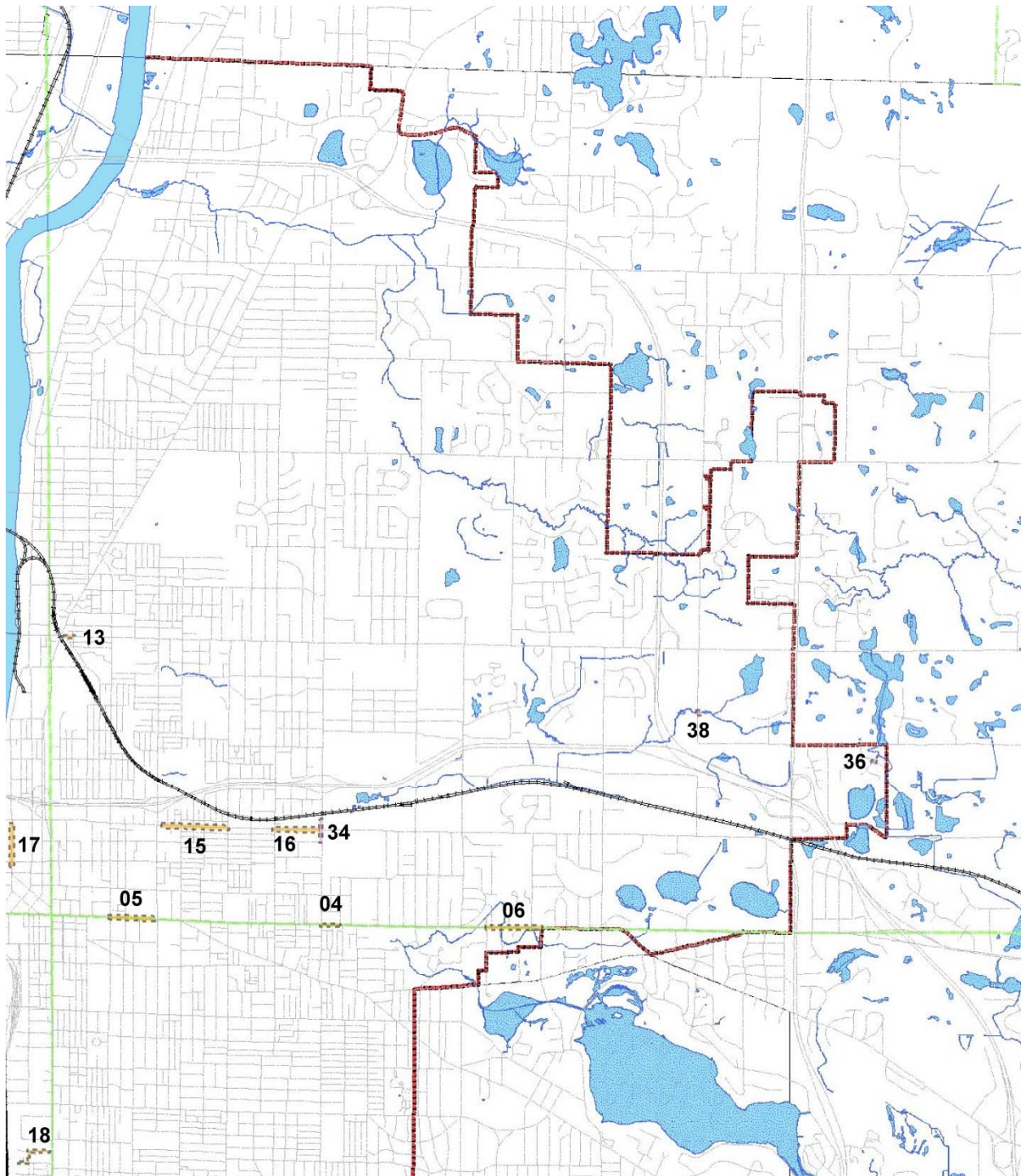


Figure C-3 Capital Projects SE

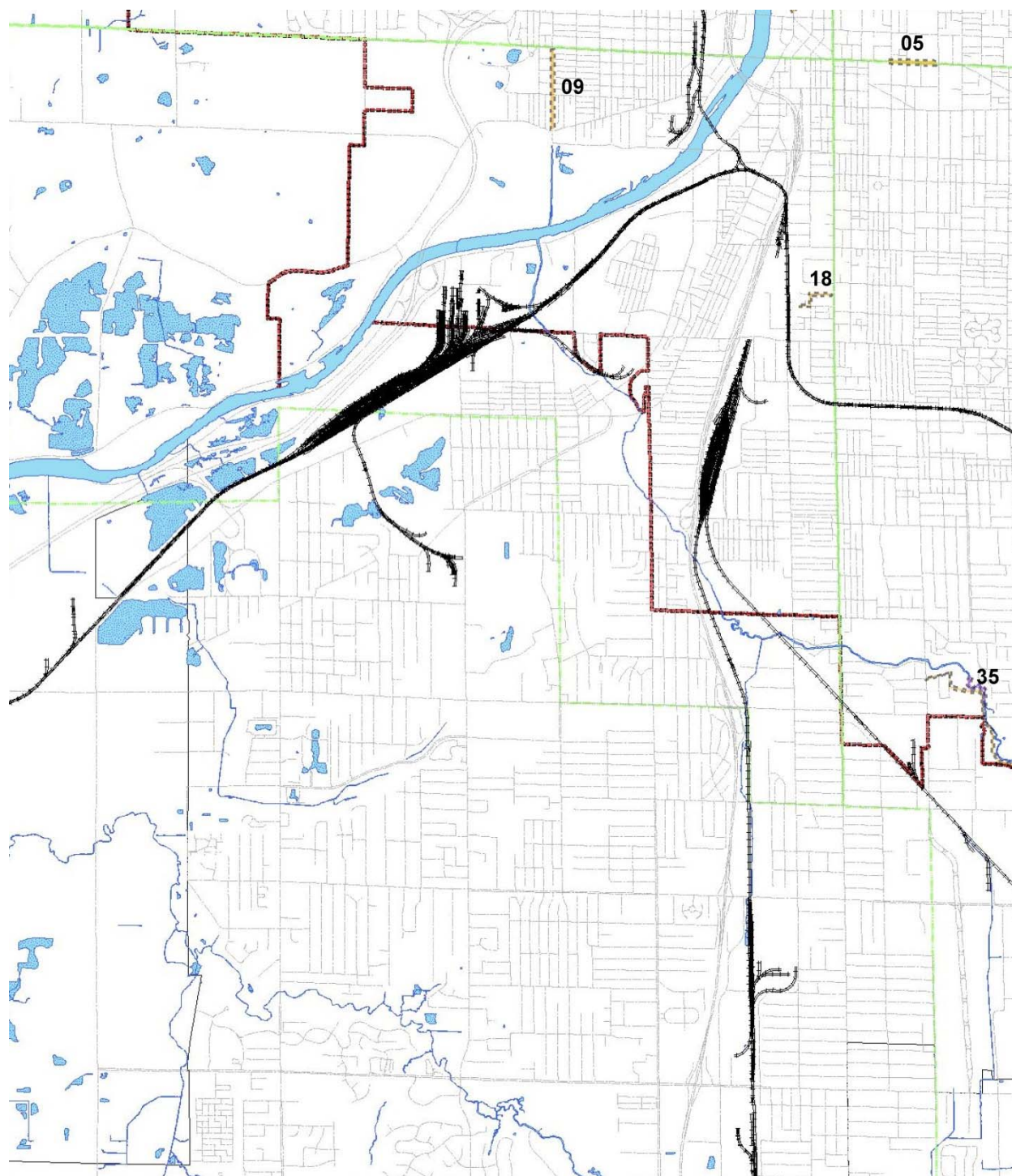
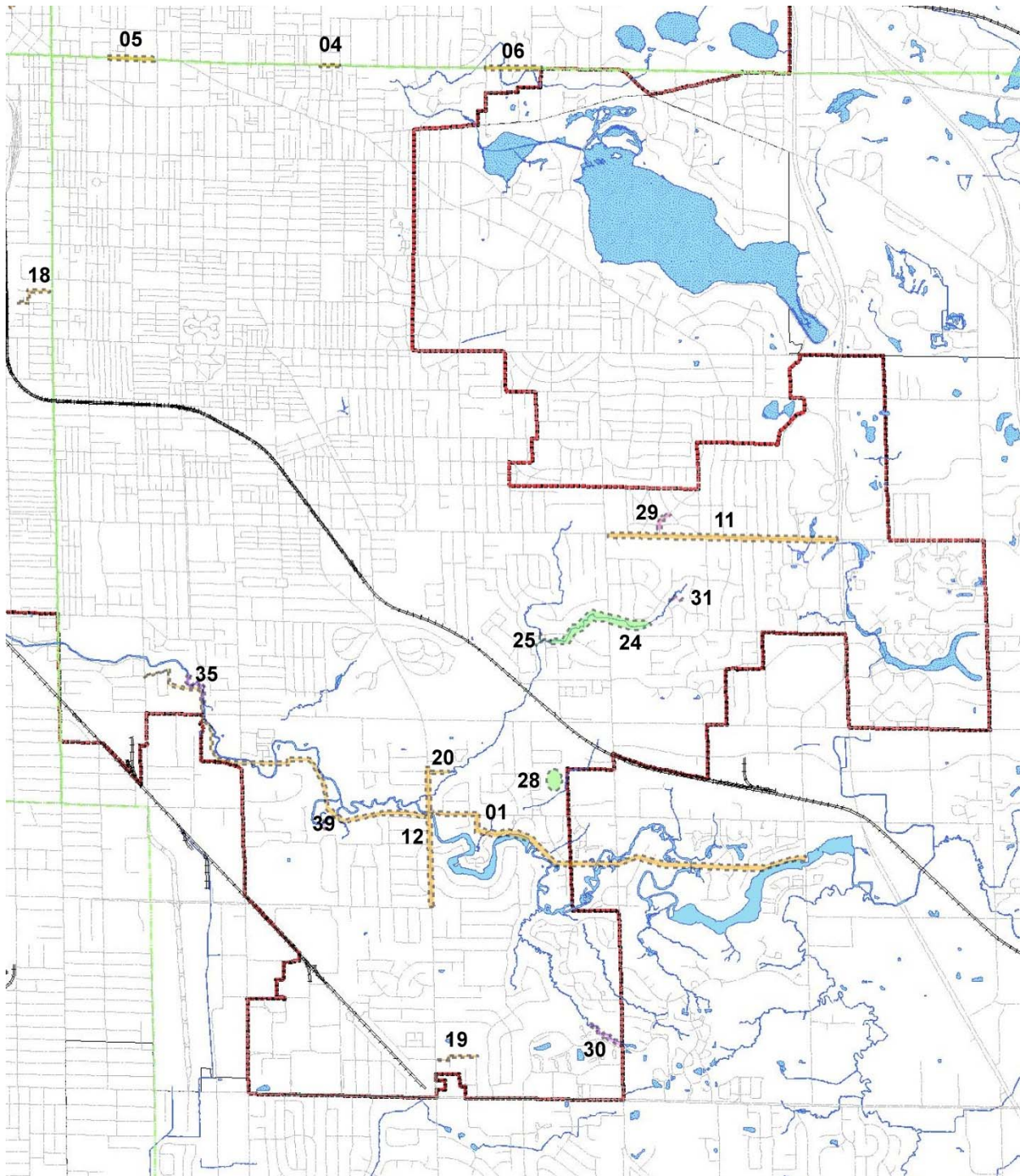
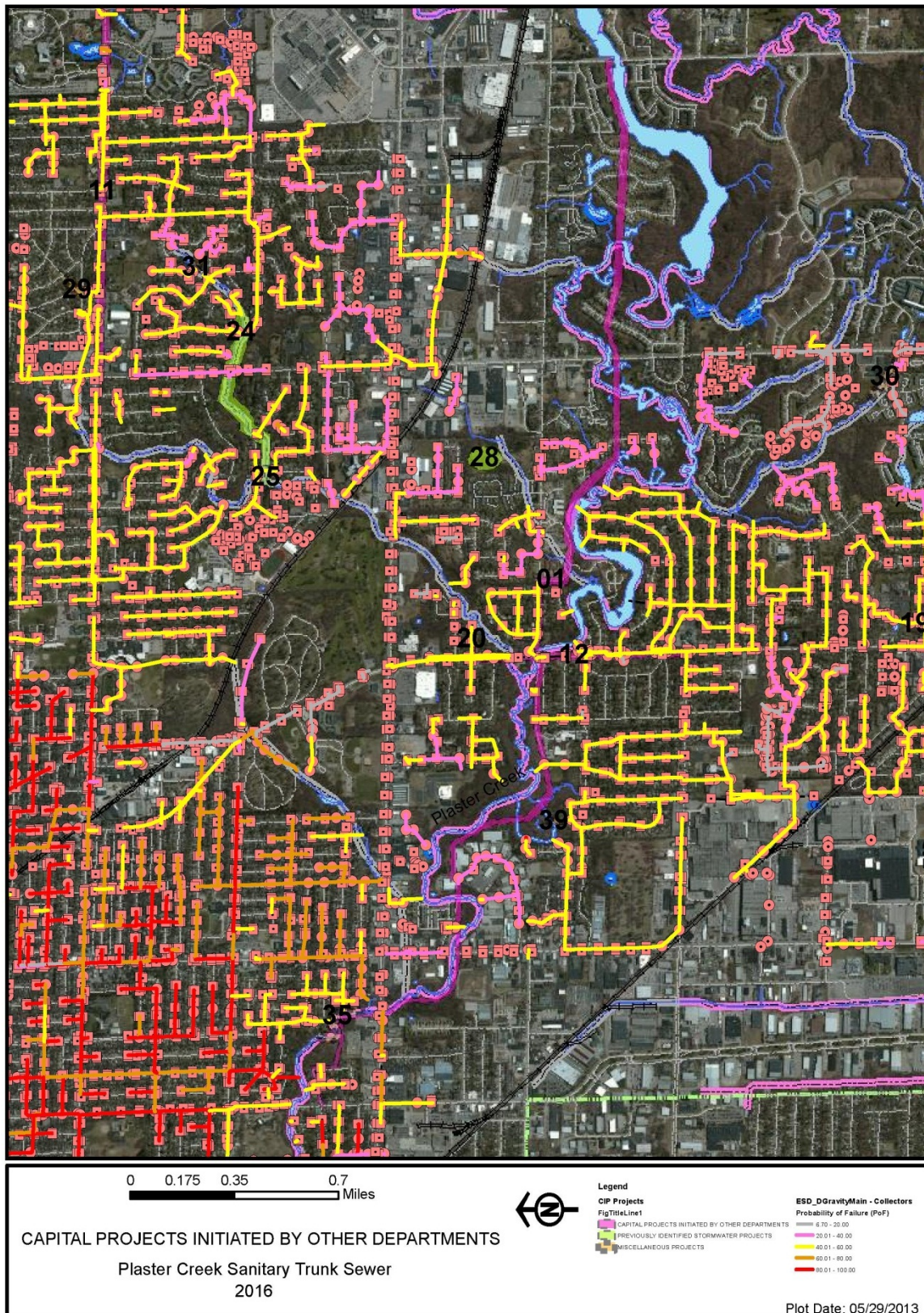
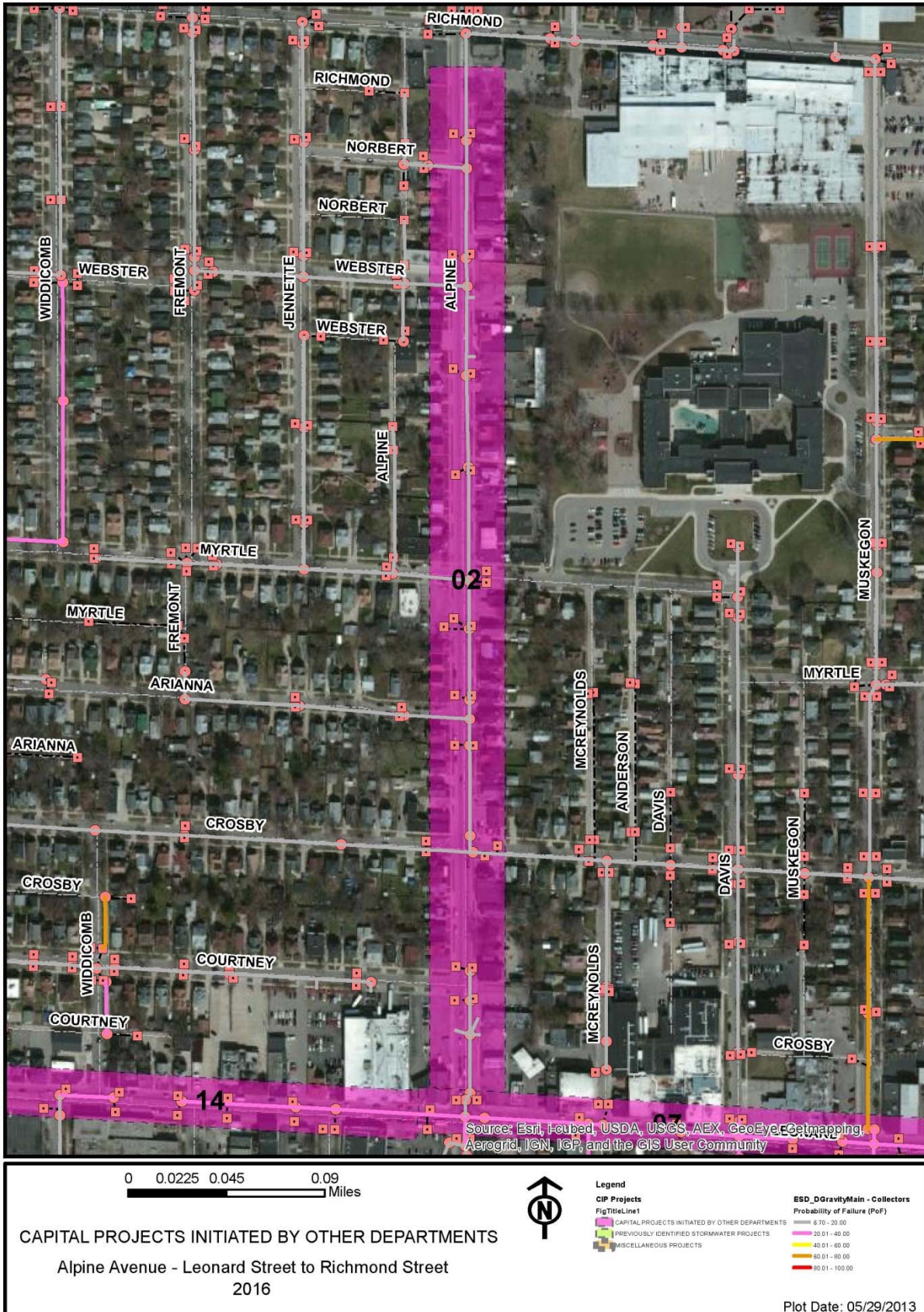


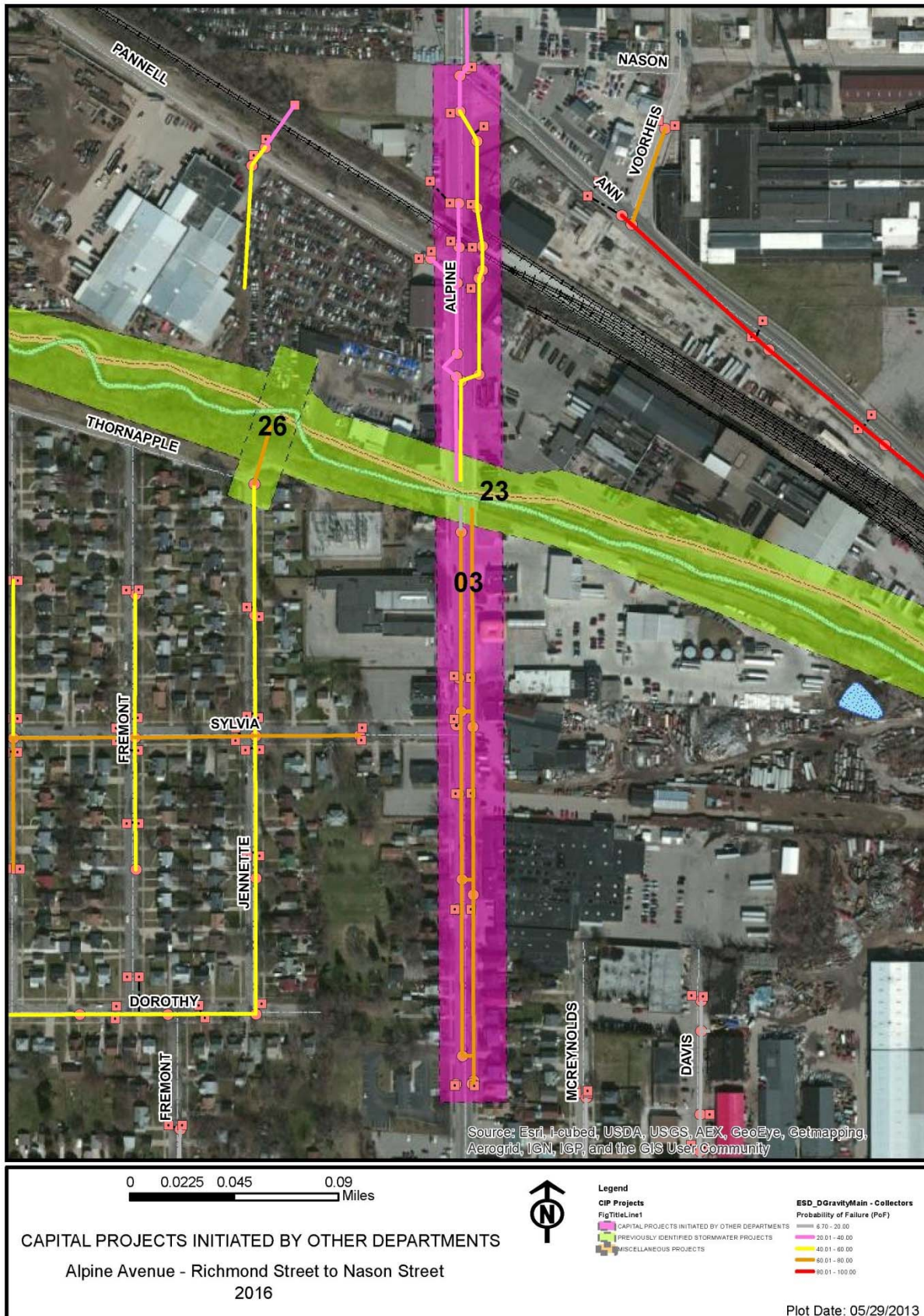
Figure C-4 Capital Projects SE

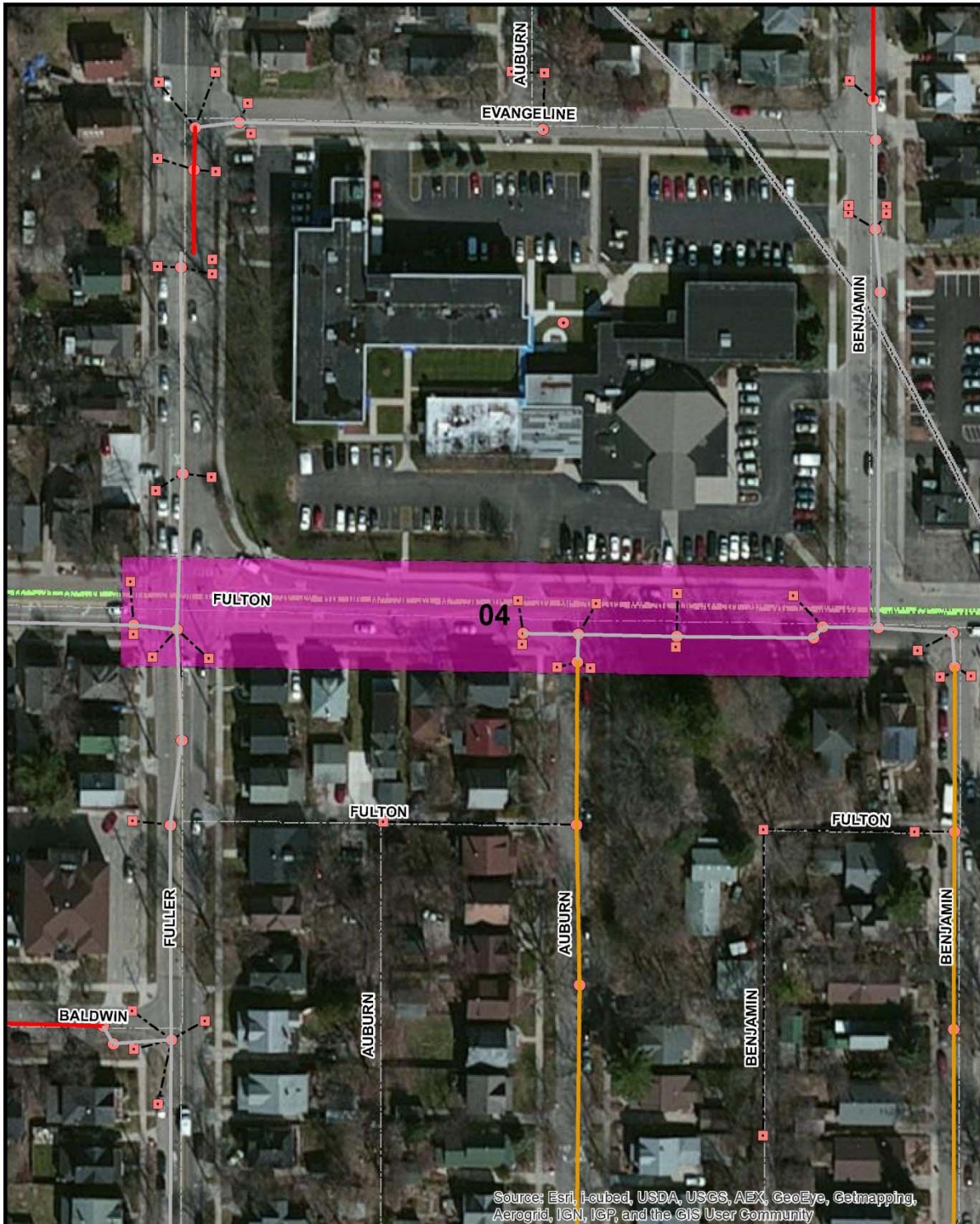


C2. DETAILED INFORMATION









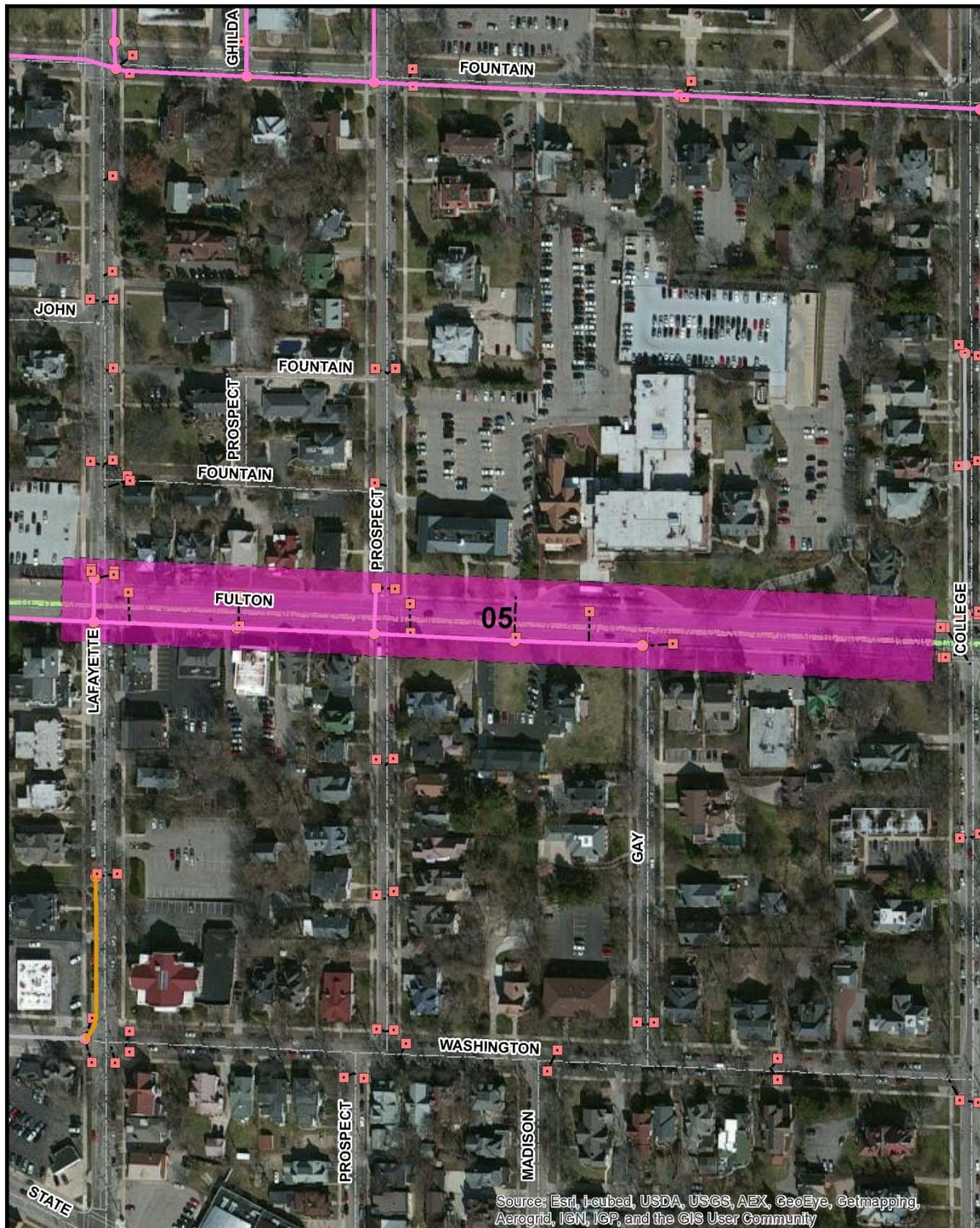
Source: Esri, i-cubed, USDA, USGS, AEX, GeoEye, Getmapping, Aerogrid, IGN, IGP, and the GIS User Community

0 0.0075 0.015 0.03 Miles

CAPITAL PROJECTS INITIATED BY OTHER DEPARTMENTS
 Fulton Street - Fuller Avenue to Benjamin Avenue
 2016

Plot Date: 05/29/2013

<p>Legend</p> <p>CIP Projects CAPITAL PROJECTS INITIATED BY OTHER DEPARTMENTS PREVIOUSLY IDENTIFIED STORMWATER PROJECTS MISCELLANEOUS PROJECTS</p>	<p></p>	<p>ESD_DGravityMain - Collectors Probability of Failure (PoF)</p>
		<p> 8.70 - 20.00 20.01 - 40.00 40.01 - 60.00 60.01 - 80.00 80.01 - 100.00</p>



0 0.015 0.03 0.06 Miles

CAPITAL PROJECTS INITIATED BY OTHER DEPARTMENTS
 Fulton Street - Lafayette Avenue to College Avenue
 2016

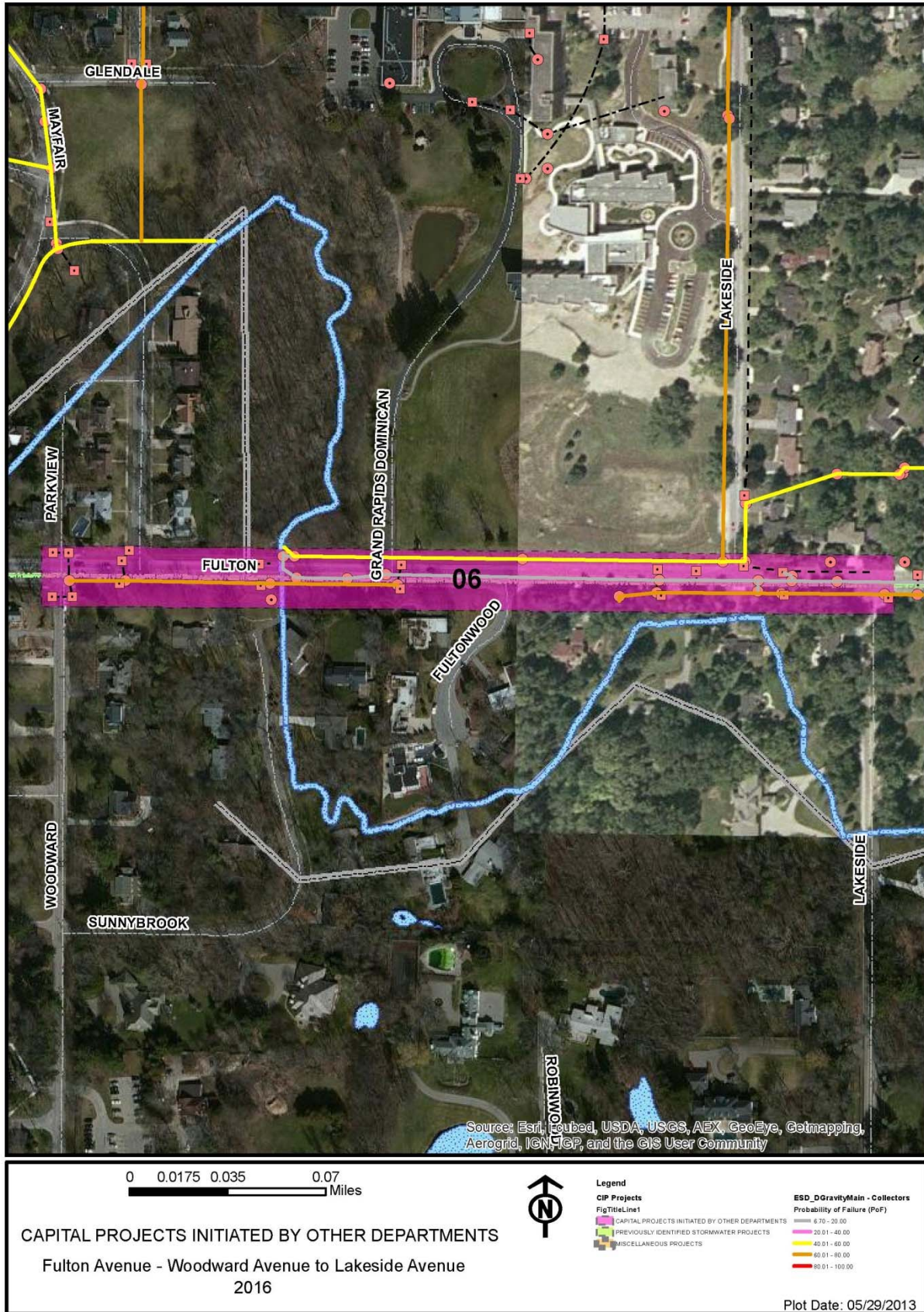
Legend

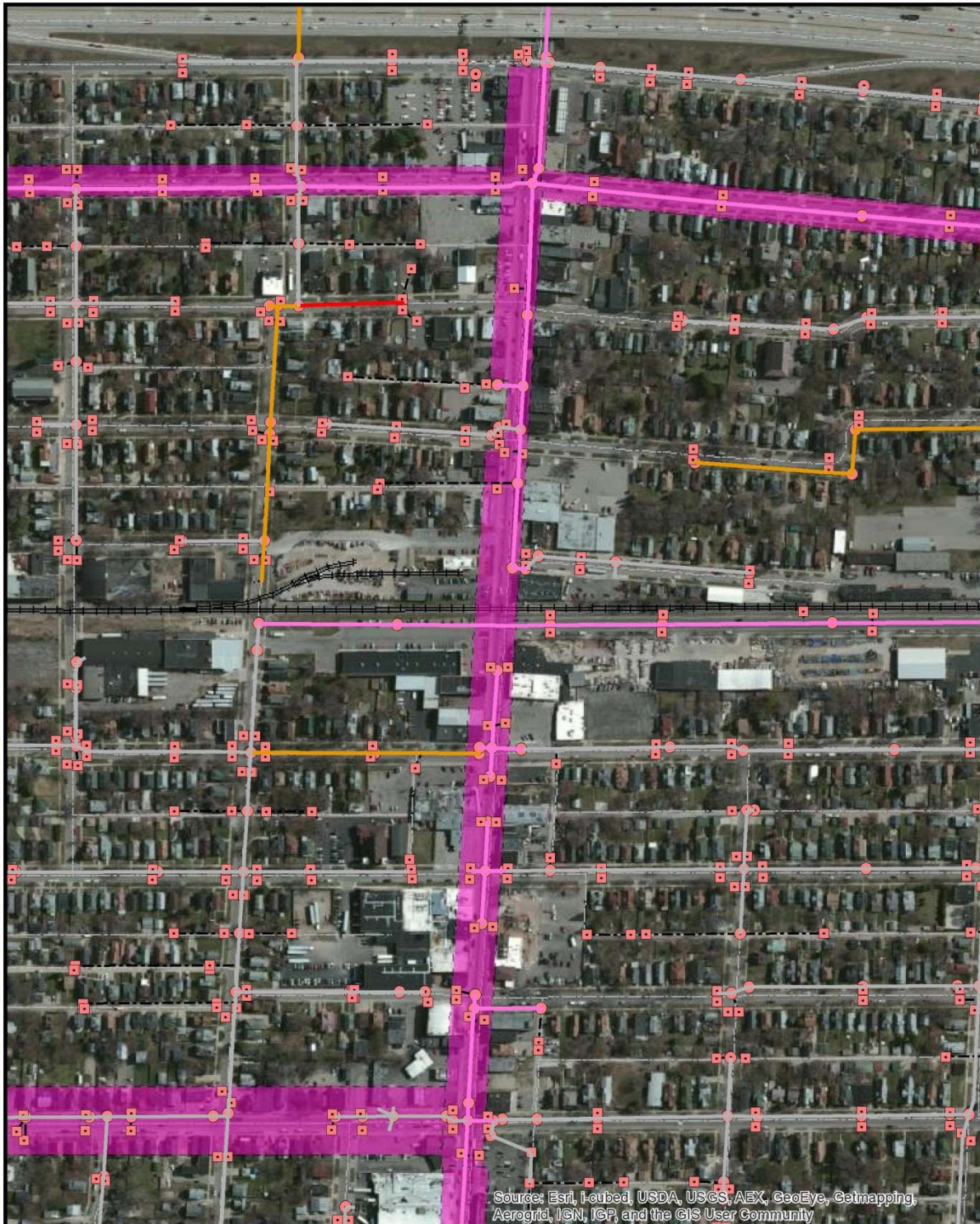
- CIP Projects
- FigTitleLine1
- CAPITAL PROJECTS INITIATED BY OTHER DEPARTMENTS
- PREVIOUSLY IDENTIFIED STORMWATER PROJECTS
- MISCELLANEOUS PROJECTS

ESD_DGravityMain - Collectors
 Probability of Failure (PoF)

- 8.70 - 20.00
- 20.01 - 40.00
- 40.01 - 60.00
- 60.01 - 80.00
- 80.01 - 100.00

Plot Date: 05/29/2013





Source: Esri, i-cubed, USDA, USGS, AEX, GeoEye, Getmapping, Aerogrid, IGN, IGP, and the GIS User Community

0 0.0275 0.055 0.11 Miles

CAPITAL PROJECTS INITIATED BY OTHER DEPARTMENTS

Leonard Street - Alpine Avenue to Turner Avenue
2016



Legend

CIP Projects

FigTitleLine1

■ CAPITAL PROJECTS INITIATED BY OTHER DEPARTMENTS

■ PREVIOUSLY IDENTIFIED STORMWATER PROJECTS

■ MISCELLANEOUS PROJECTS

ESD_DGravtyMain - Collectors

Probability of Failure (PoF)

■ 8.70 - 20.00

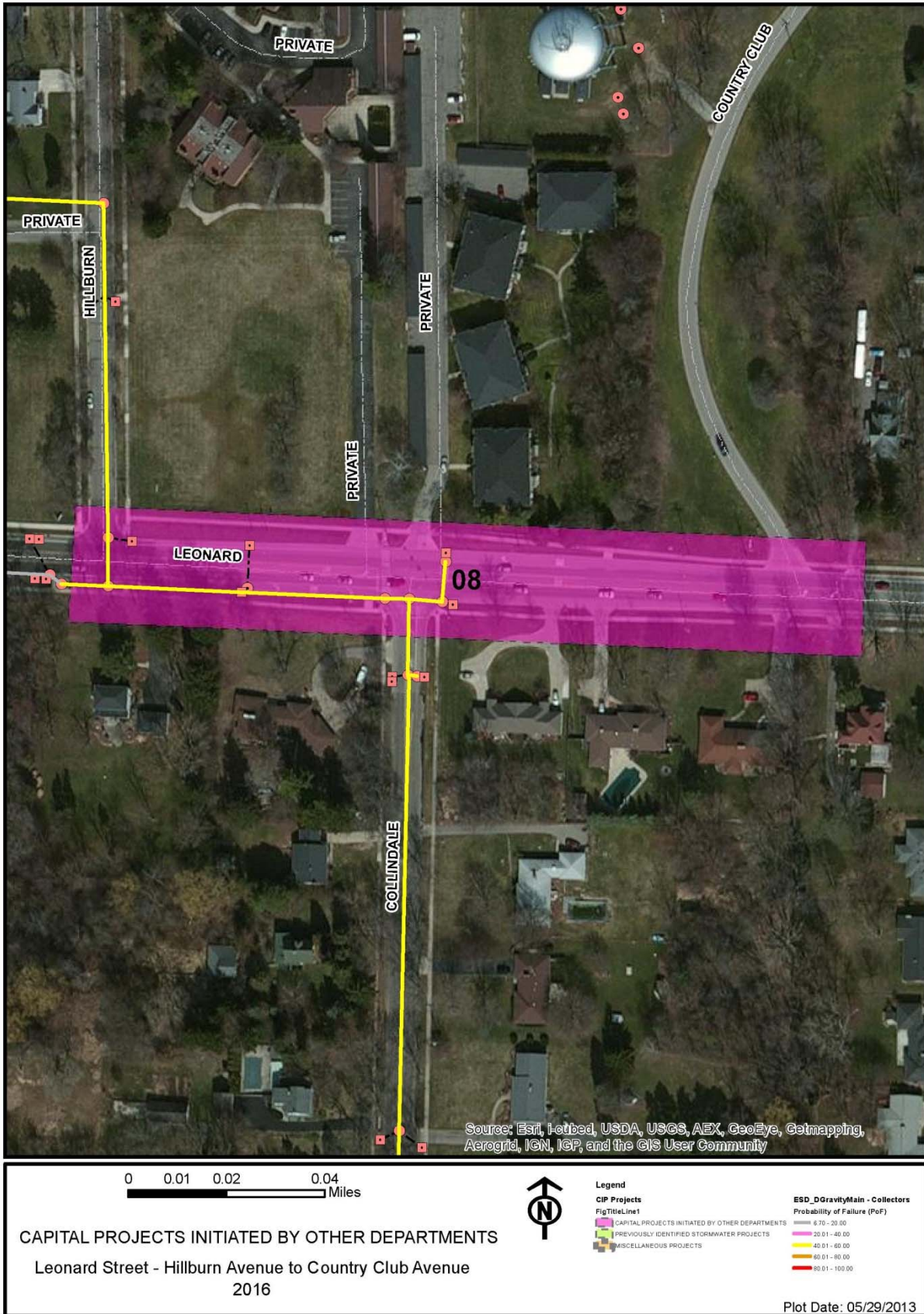
■ 20.01 - 40.00

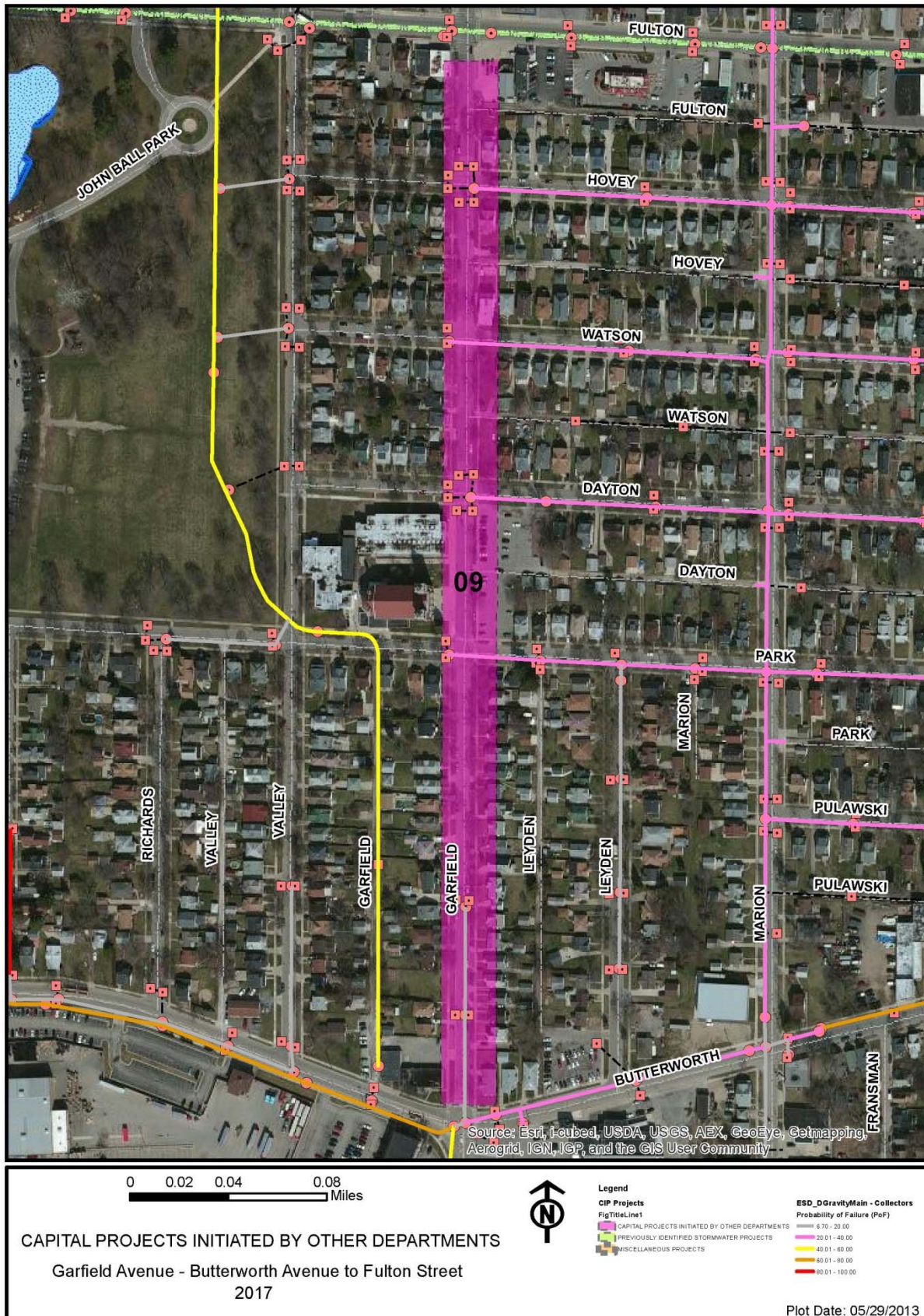
■ 40.01 - 60.00

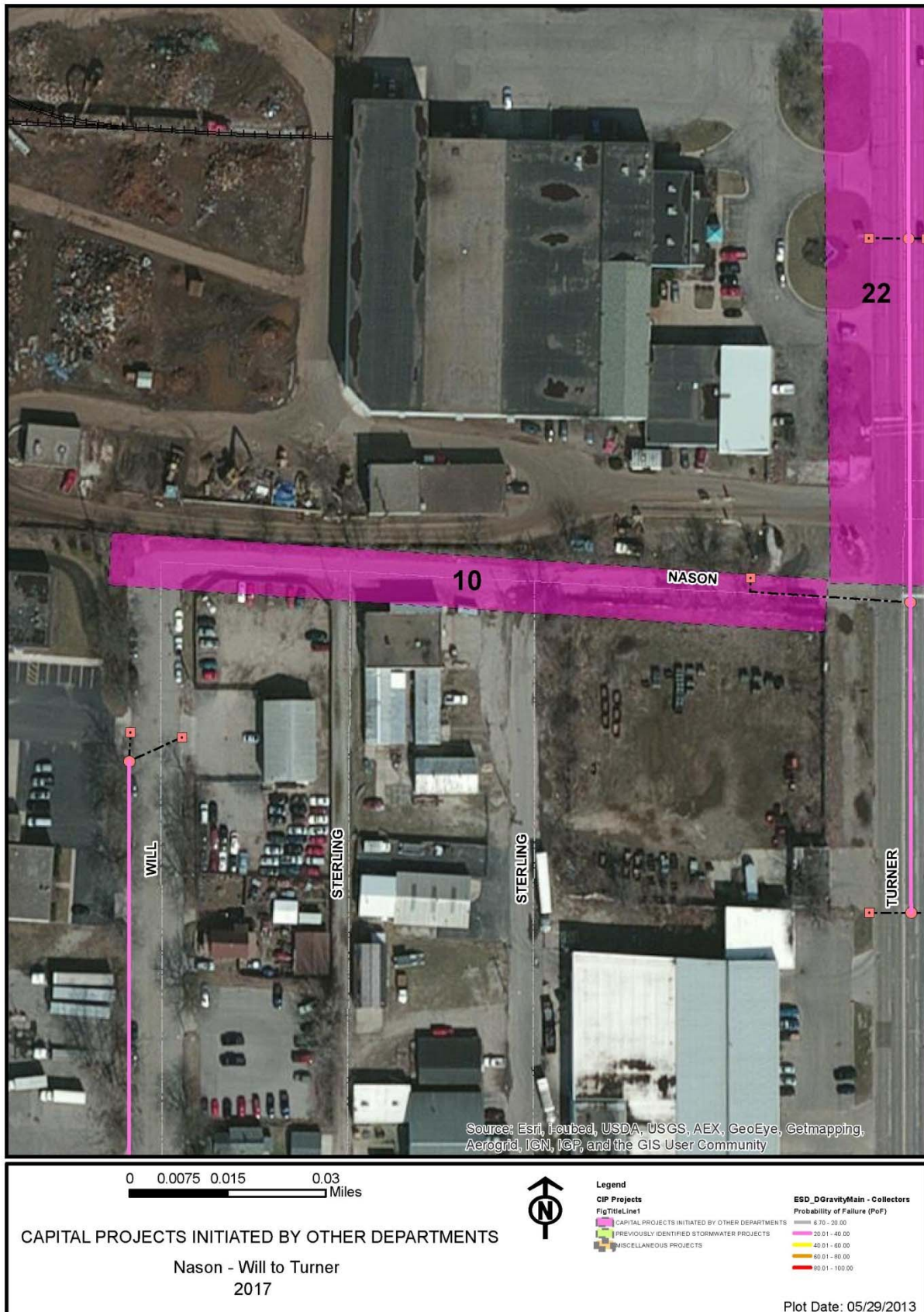
■ 60.01 - 80.00

■ 80.01 - 100.00

Plot Date: 05/29/2013



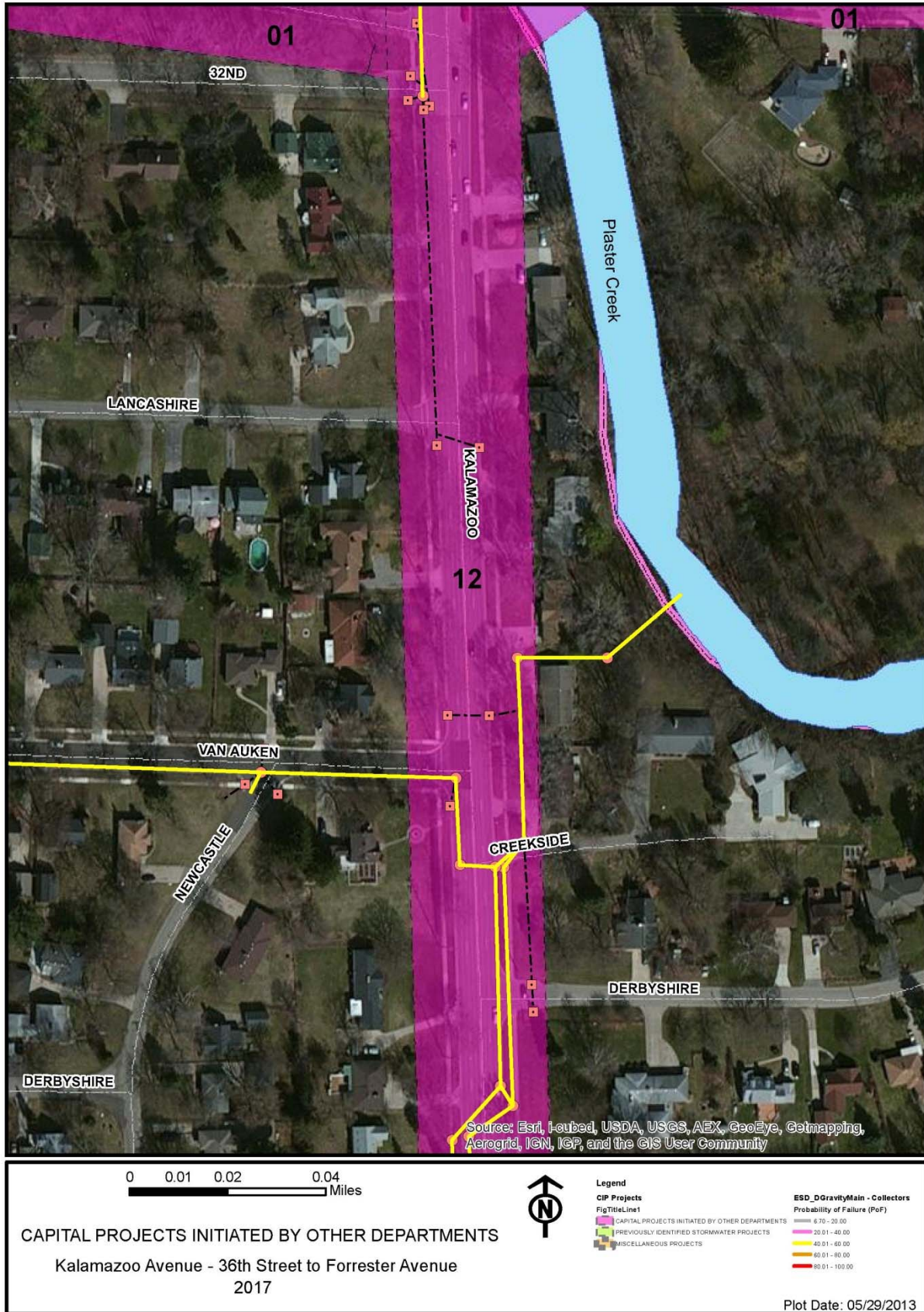


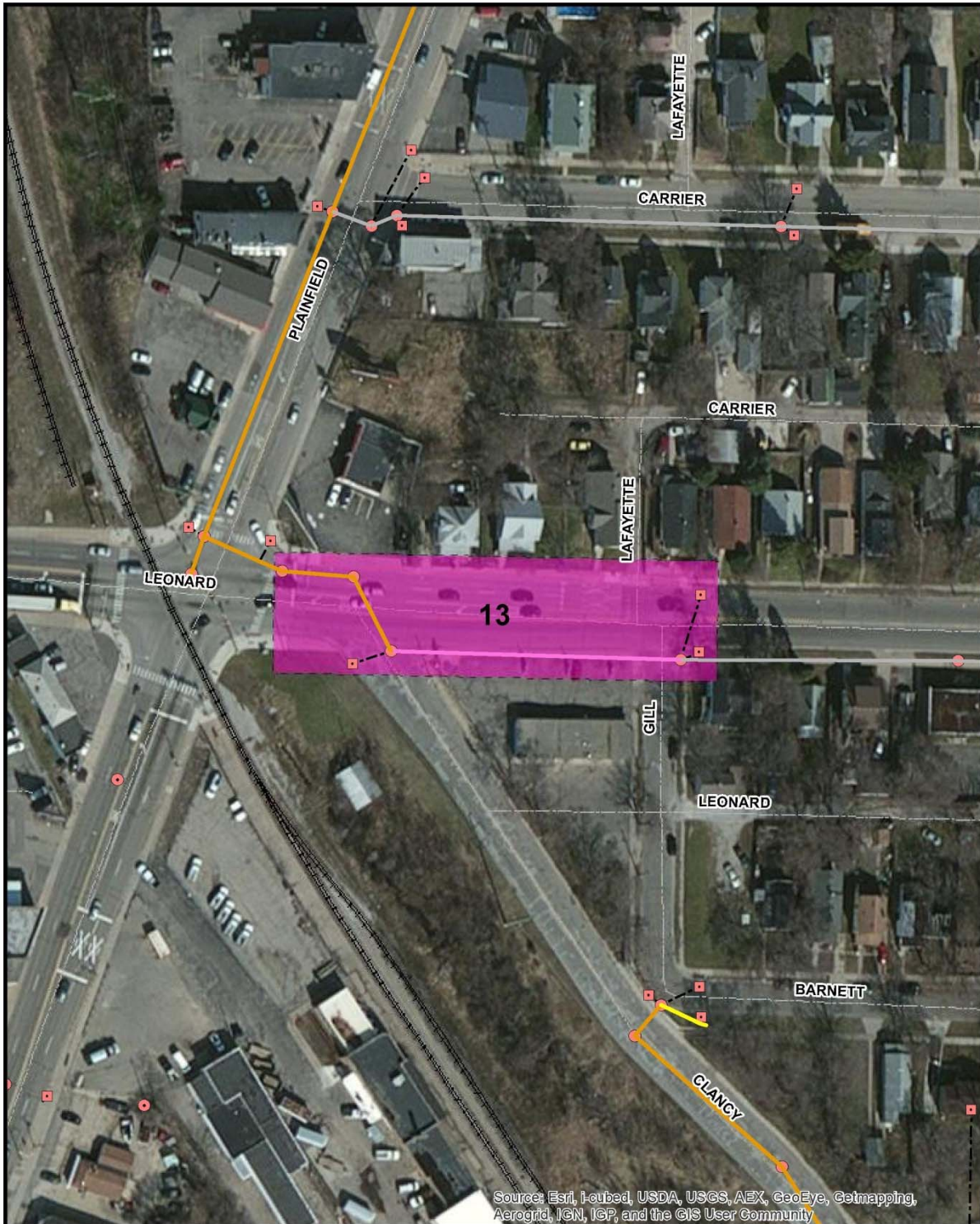


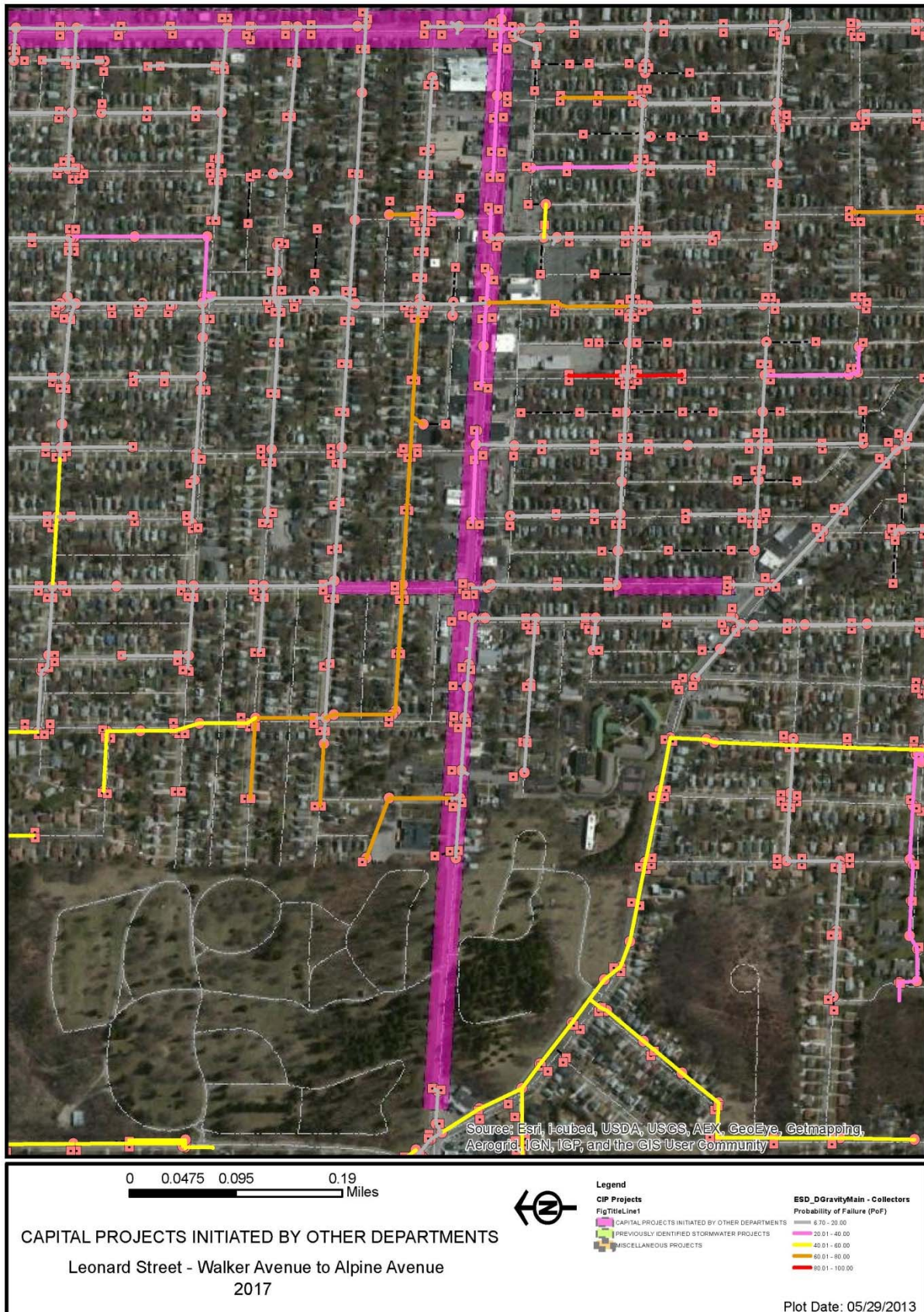


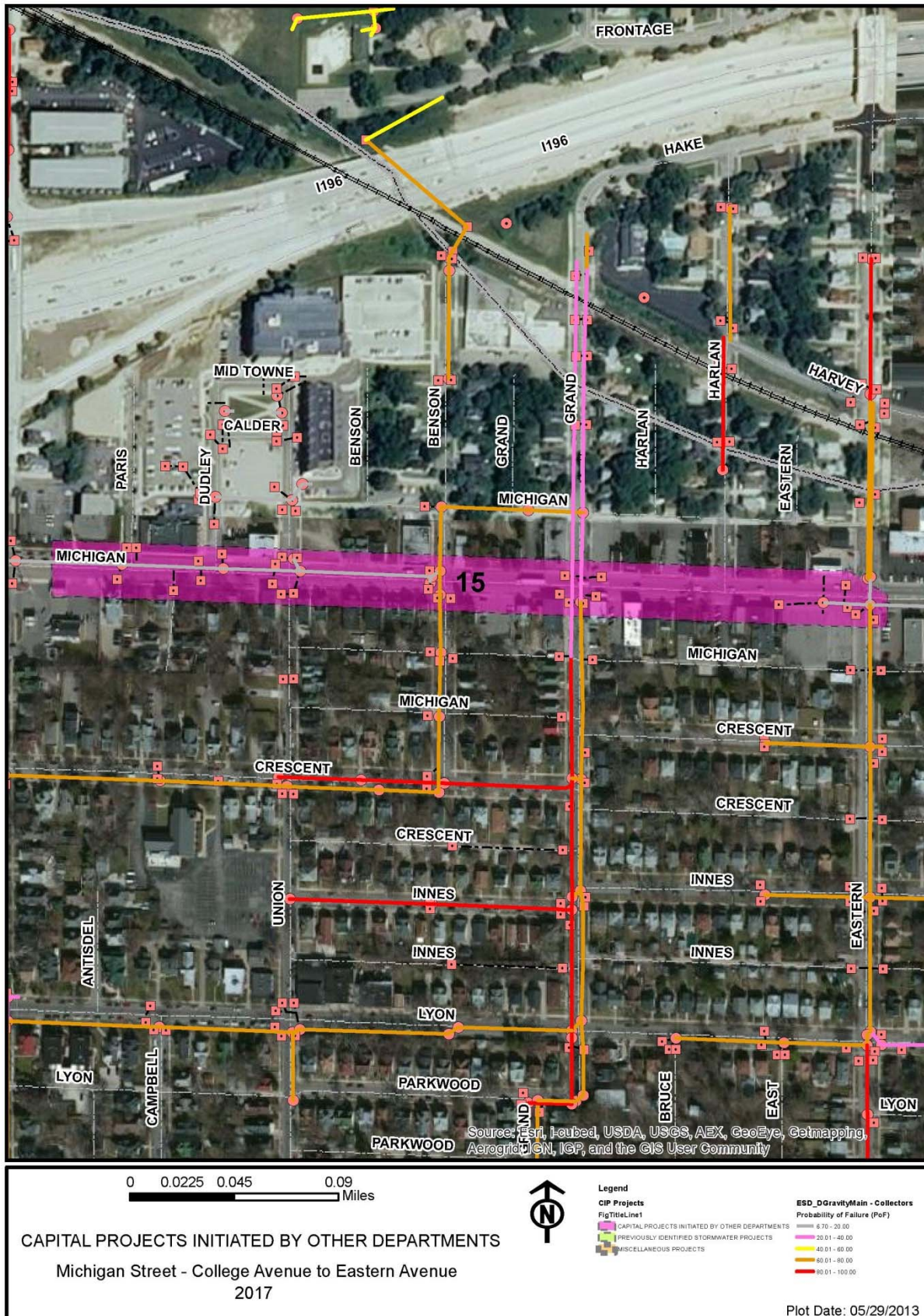
Source: Esri, I-cubed, USDA, USGS, AEX, GeoEye, Getmapping, Aerogrid, IGN, IGP, and the GIS User Community

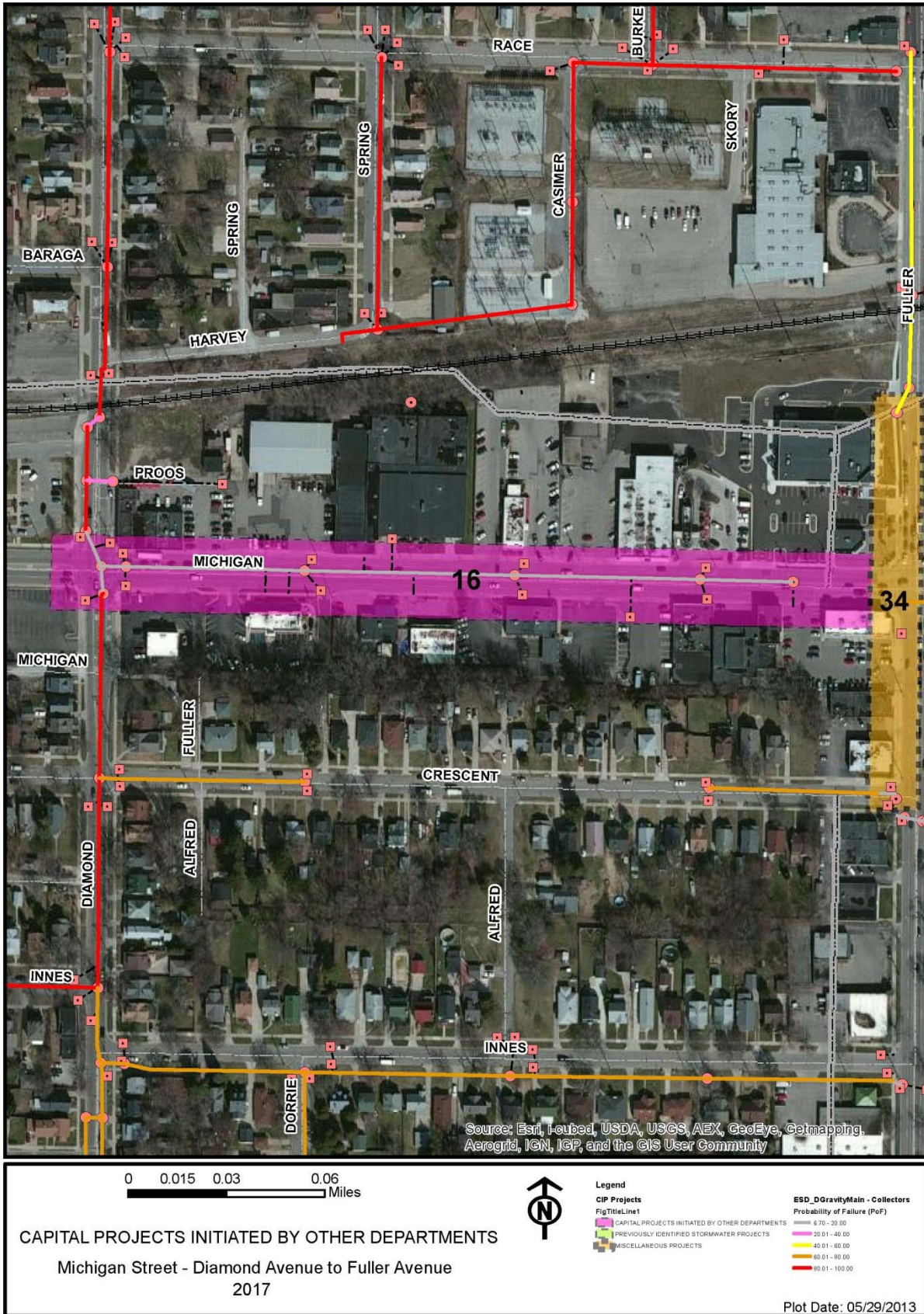
<p>0 0.05 0.1 0.2 Miles</p>		<p>Legend</p> <p>CIP Projects FigTitleLine1</p> <ul style="list-style-type: none"> CAPITAL PROJECTS INITIATED BY OTHER DEPARTMENTS PREVIOUSLY IDENTIFIED STORMWATER PROJECTS MISCELLANEOUS PROJECTS 	<p>ESD_DGravityMain - Collectors Probability of Failure (PoF)</p> <ul style="list-style-type: none"> 0.70 - 20.00 20.01 - 40.00 40.01 - 60.00 60.01 - 80.00 80.01 - 100.00
<p>CAPITAL PROJECTS INITIATED BY OTHER DEPARTMENTS</p> <p>Burton Street - Breton Avenue to East Beltline 2017</p>		<p>Plot Date: 05/29/2013</p>	

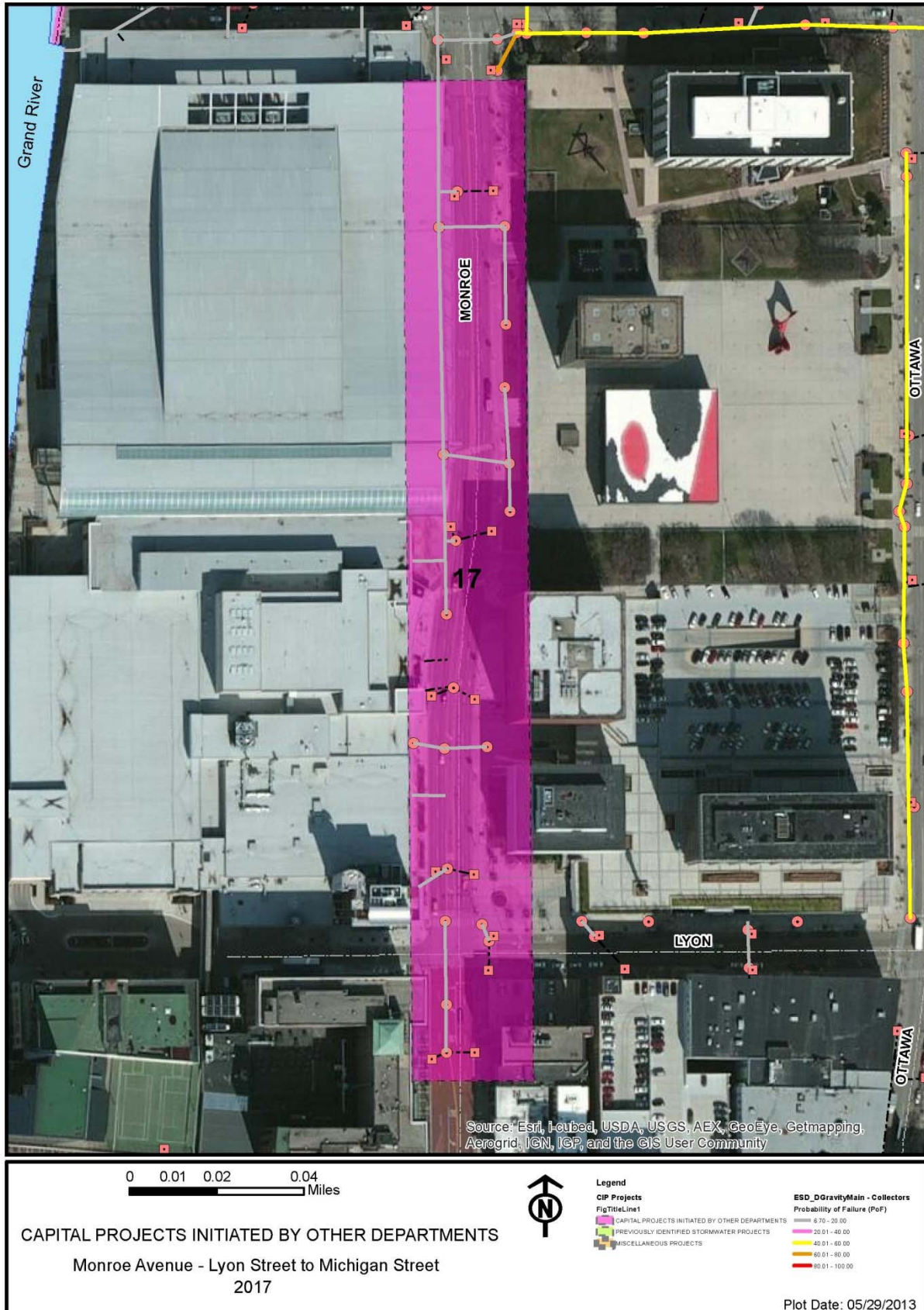




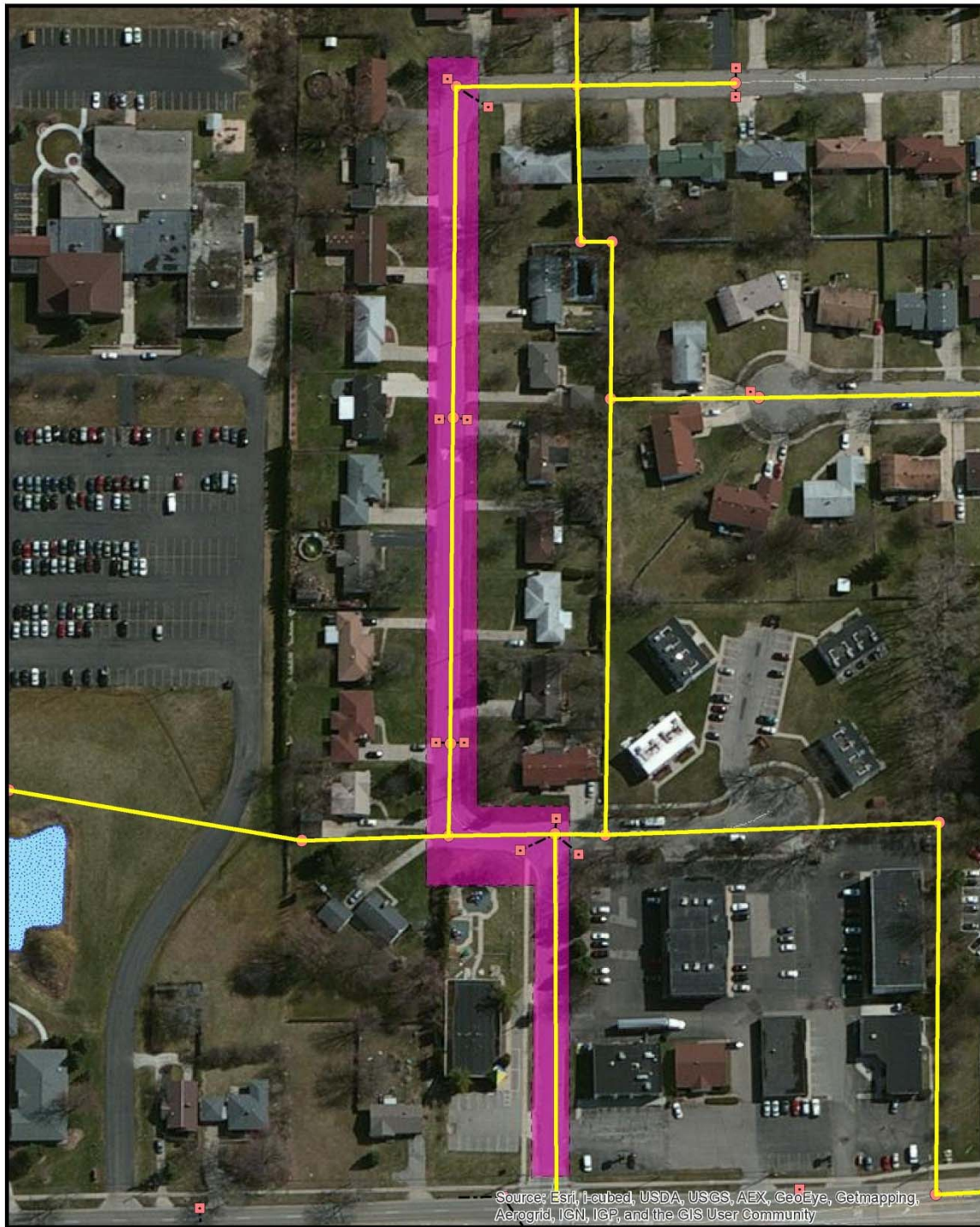




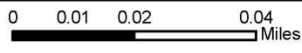








Source: Esri, i-labeled, USDA, USGS, AEX, GeoEye, Getmapping, Aerogrid, IGN, IGP, and the GIS User Community

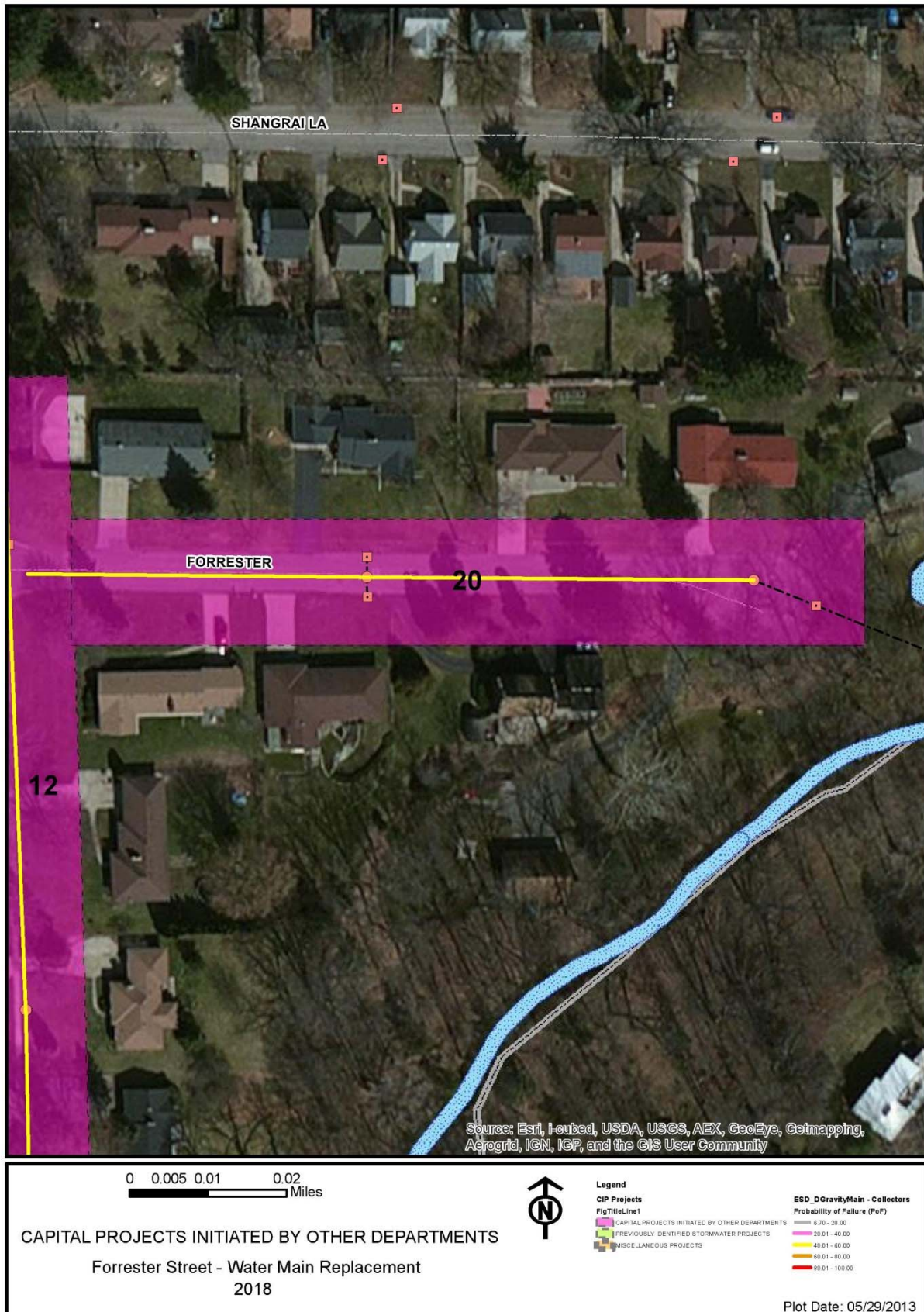


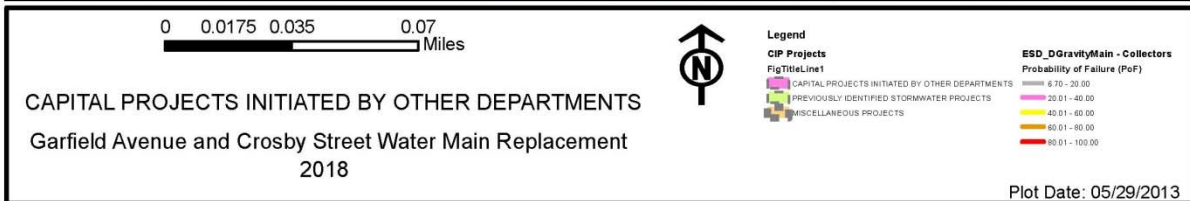
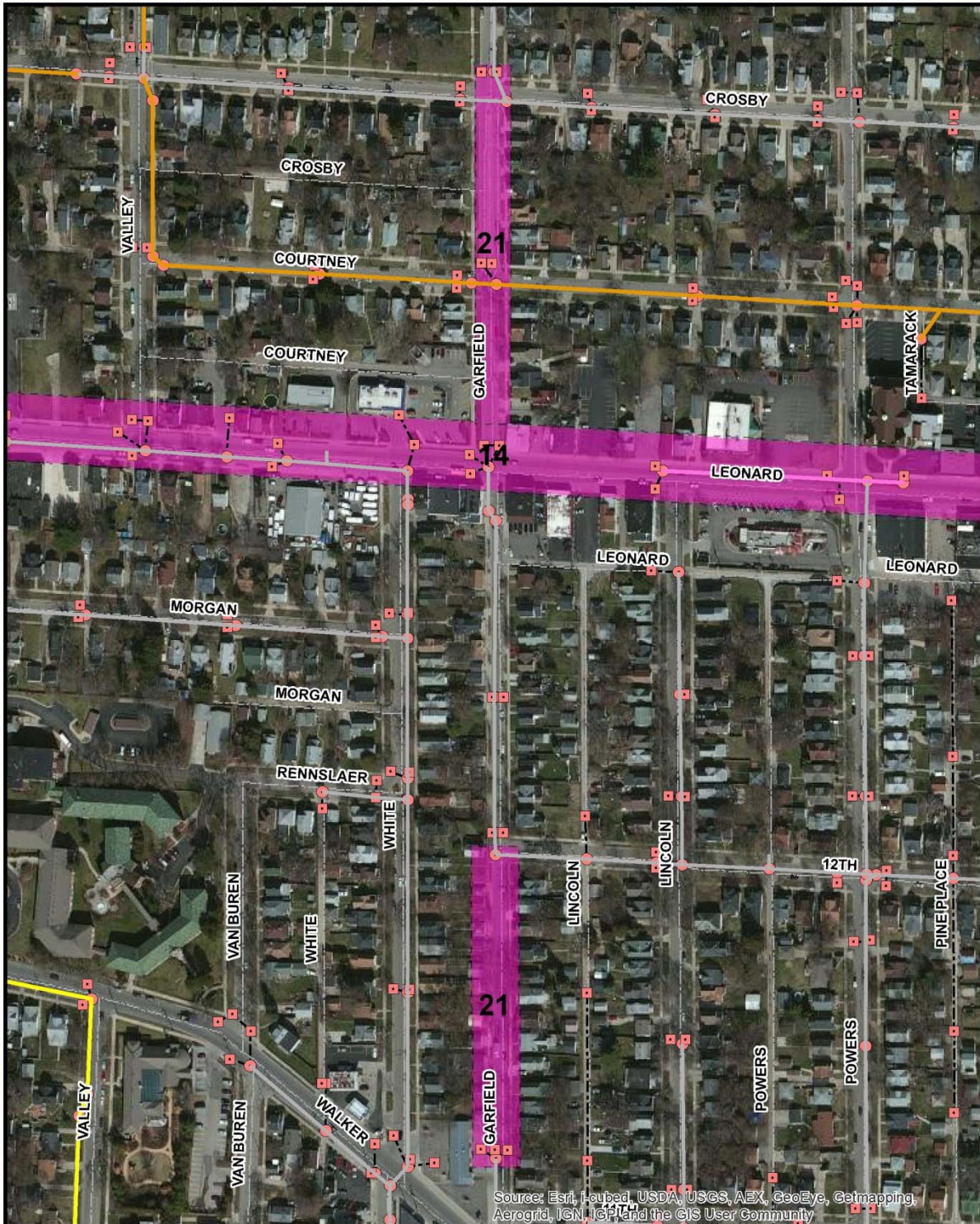
CAPITAL PROJECTS INITIATED BY OTHER DEPARTMENTS

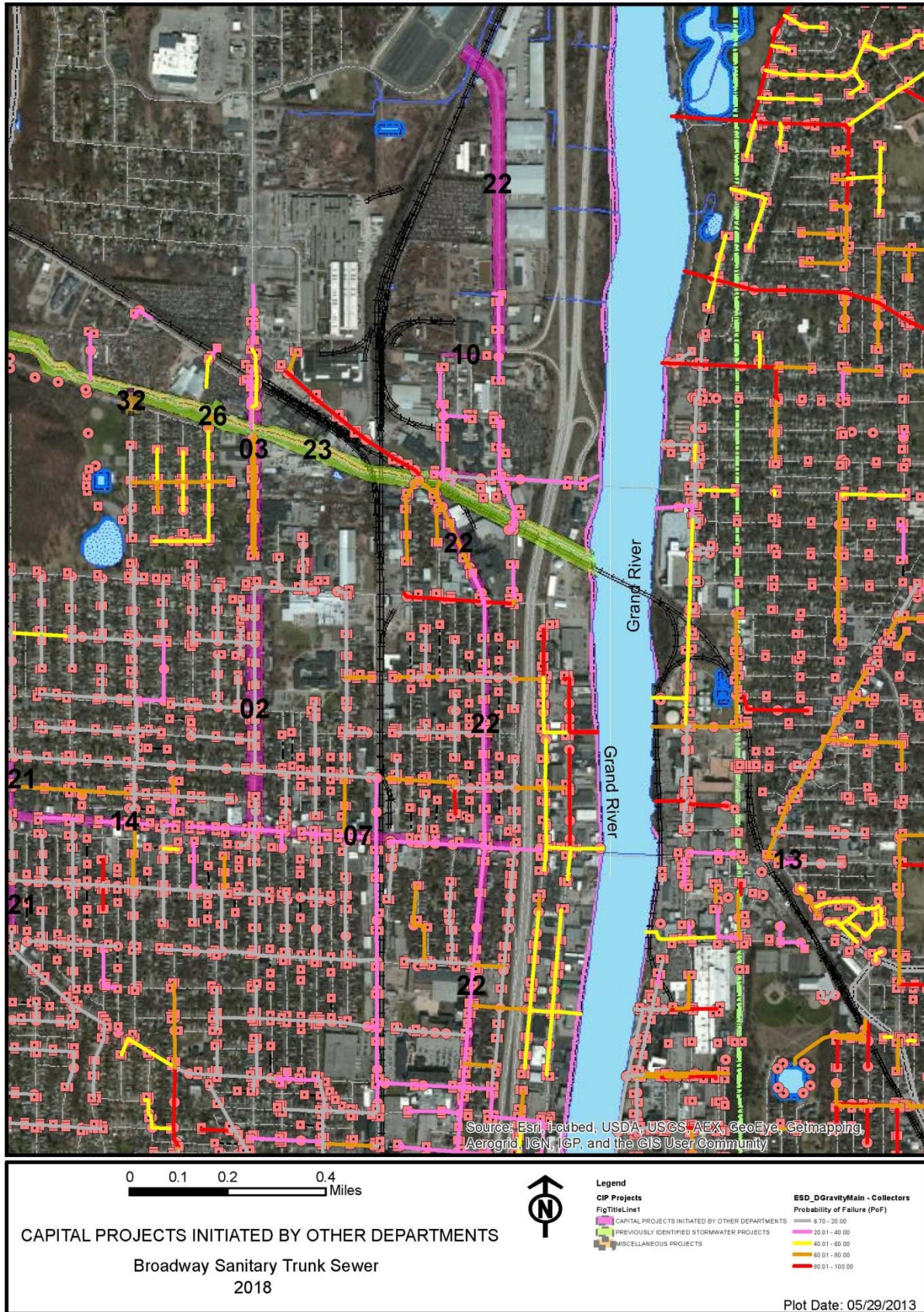
Langley Street - Plymouth Avenue to Kalamazoo Avenue, Watermain Replacement
2018

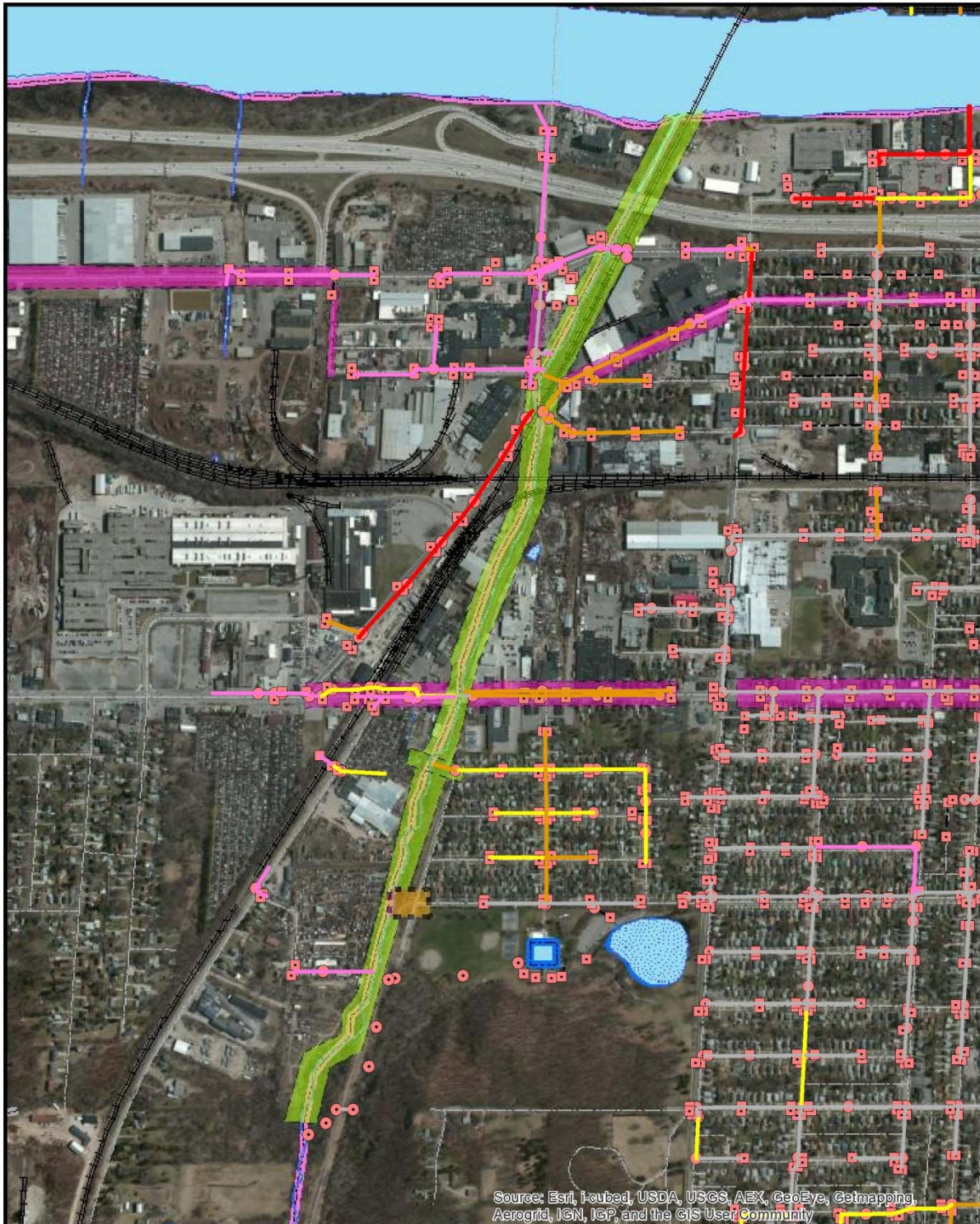
- Legend**
- CIP Projects**
 - FigTitleLine1
 - CAPITAL PROJECTS INITIATED BY OTHER DEPARTMENTS
 - PREVIOUSLY IDENTIFIED STORMWATER PROJECTS
 - MISCELLANEOUS PROJECTS
- ESD_DGravityMain - Collectors Probability of Failure (PoF)**
- 6.70 - 20.00
 - 20.01 - 40.00
 - 40.01 - 60.00
 - 60.01 - 80.00
 - 80.01 - 100.00

Plot Date: 05/29/2013









Source: Esri, i-cubed, USDA, USGS, AEX, GeoEye, Getmapping, Aerogrid, IGN, IGP, and the GIS User Community

0 0.05 0.1 0.2 Miles

PREVIOUSLY IDENTIFIED STORMWATER PROJECTS

Indian Mill Creek Dredging
2015



Legend

CIP Projects

FigTitleLine1

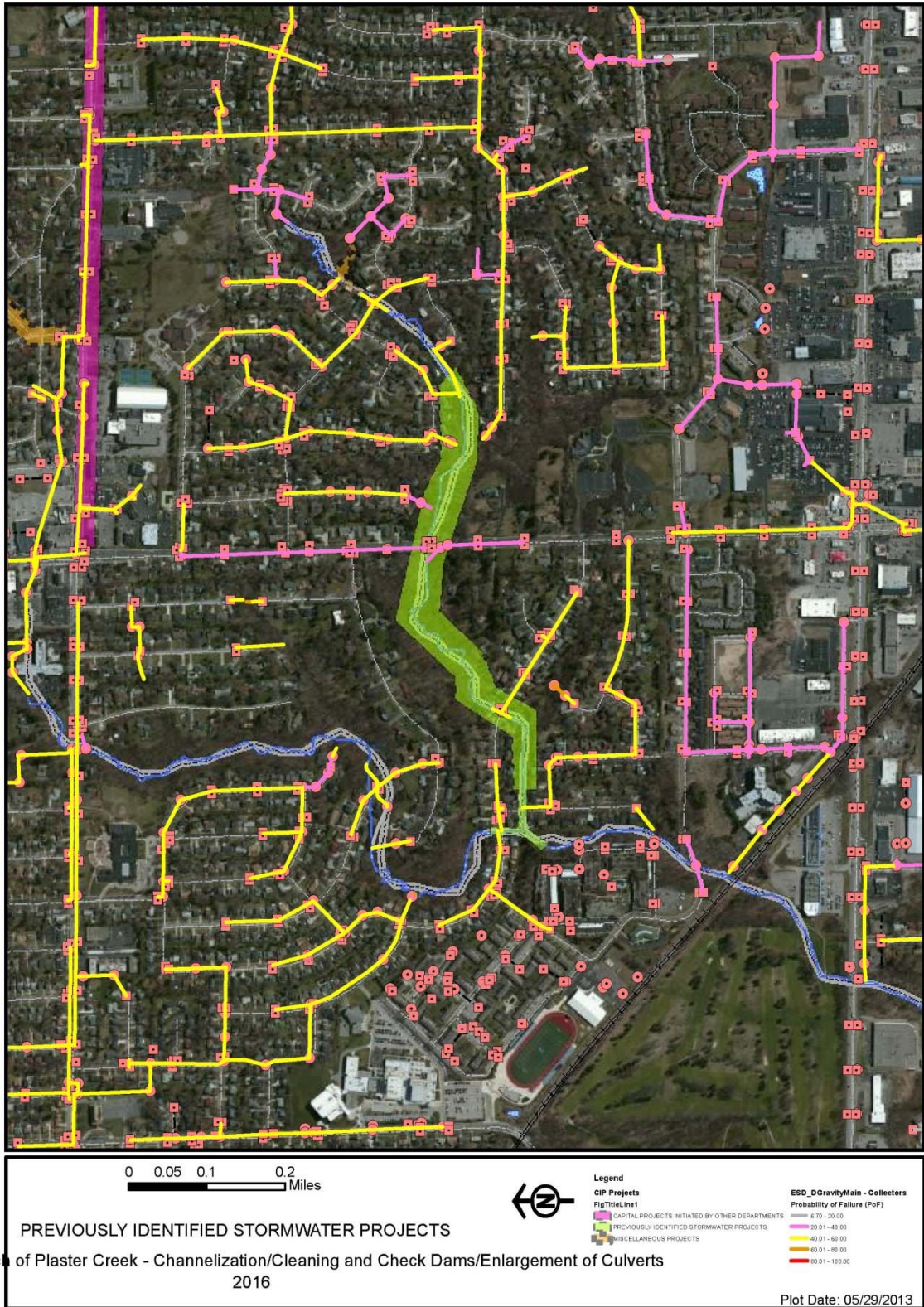
- CAPITAL PROJECTS INITIATED BY OTHER DEPARTMENTS
- PREVIOUSLY IDENTIFIED STORMWATER PROJECTS
- MISCELLANEOUS PROJECTS

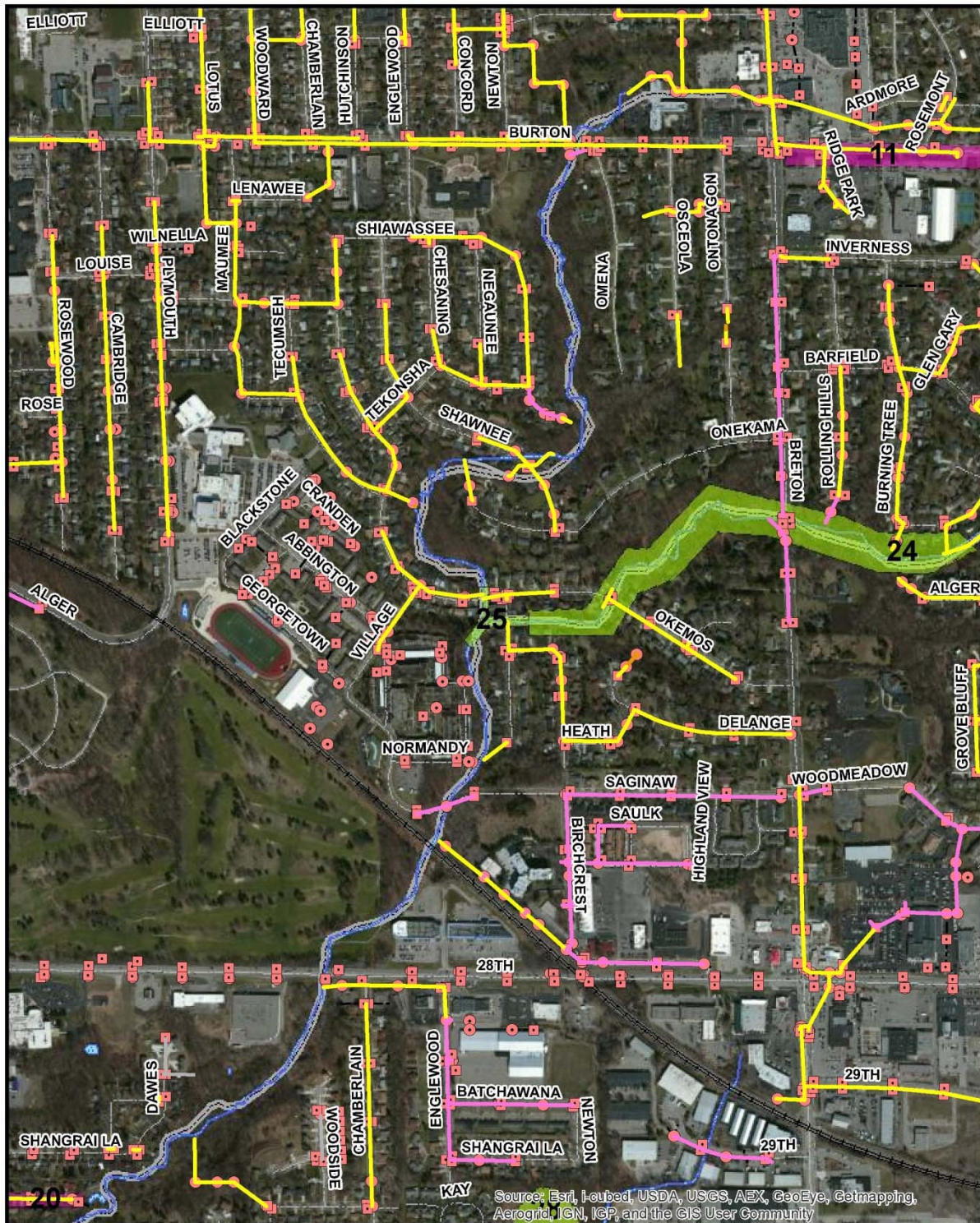
ESD_DGravityMain - Collectors

Probability of Failure (PoF)

- 8.70 - 20.00
- 20.01 - 40.00
- 40.01 - 60.00
- 60.01 - 80.00
- 80.01 - 100.00

Plot Date: 05/29/2013





0 0.05 0.1 0.2 Miles

PREVIOUSLY IDENTIFIED STORMWATER PROJECTS

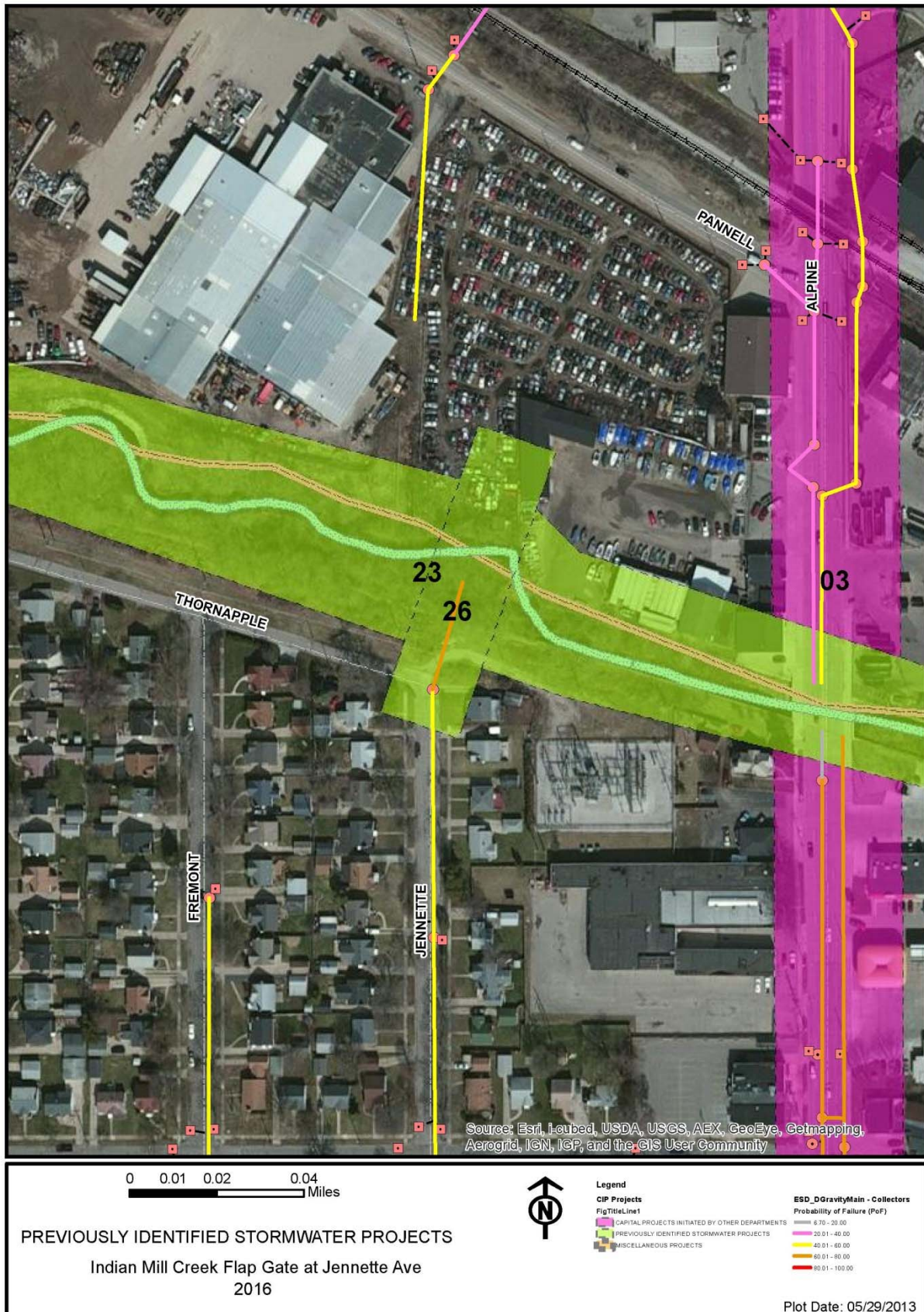
Burton-Breton Branch of Plaster Creek - Enlargement of Culverts
 Burton-Breton Branch of Plaster Creek - Enlargement of Culverts
 Burton-Breton Branch of Plaster Creek - Enlargement of Culverts

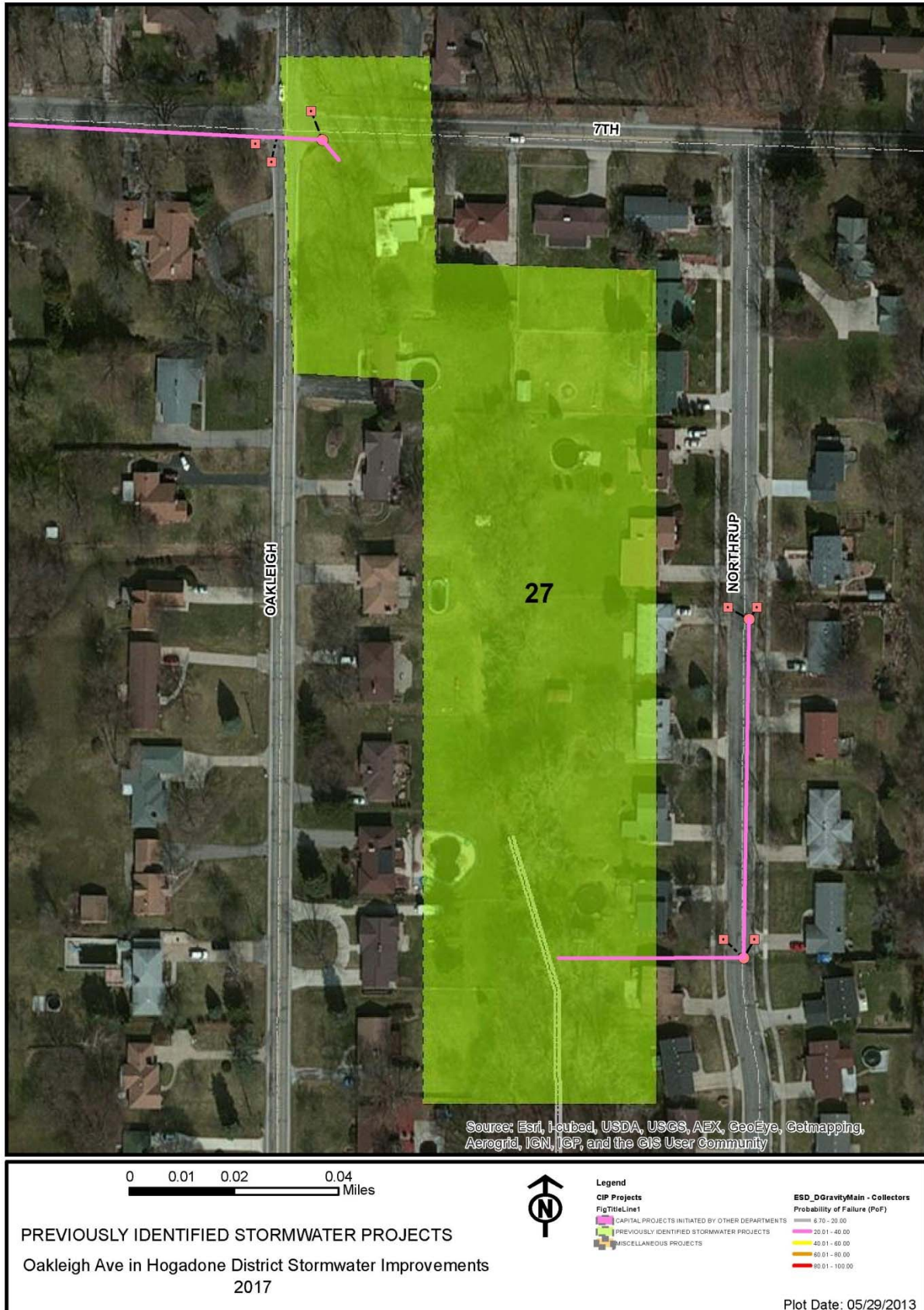
Legend

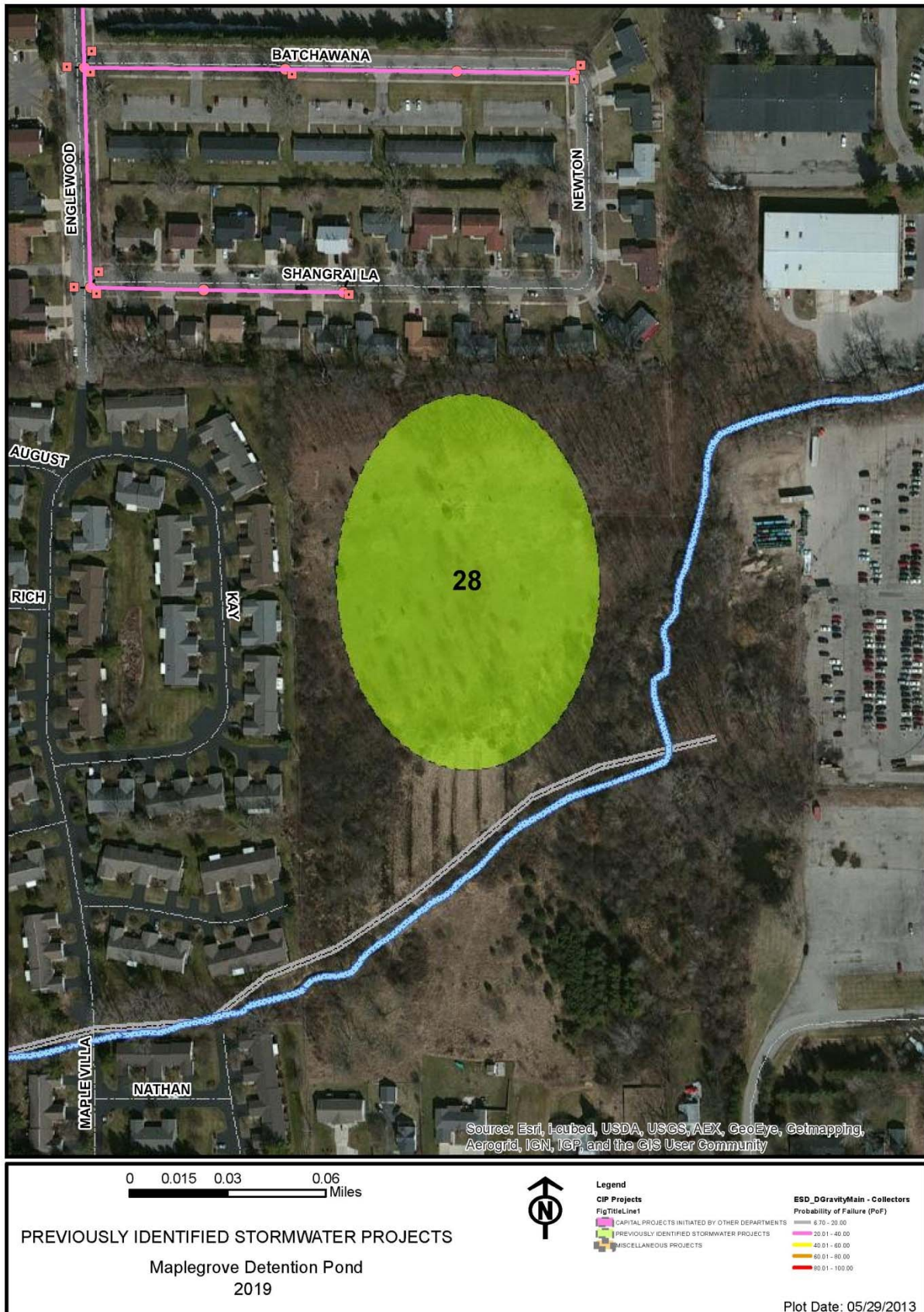
CIP Projects
 FigTitleLine1
 CAPITAL PROJECTS INITIATED BY OTHER DEPARTMENTS
 PREVIOUSLY IDENTIFIED STORMWATER PROJECTS
 MISCELLANEOUS PROJECTS

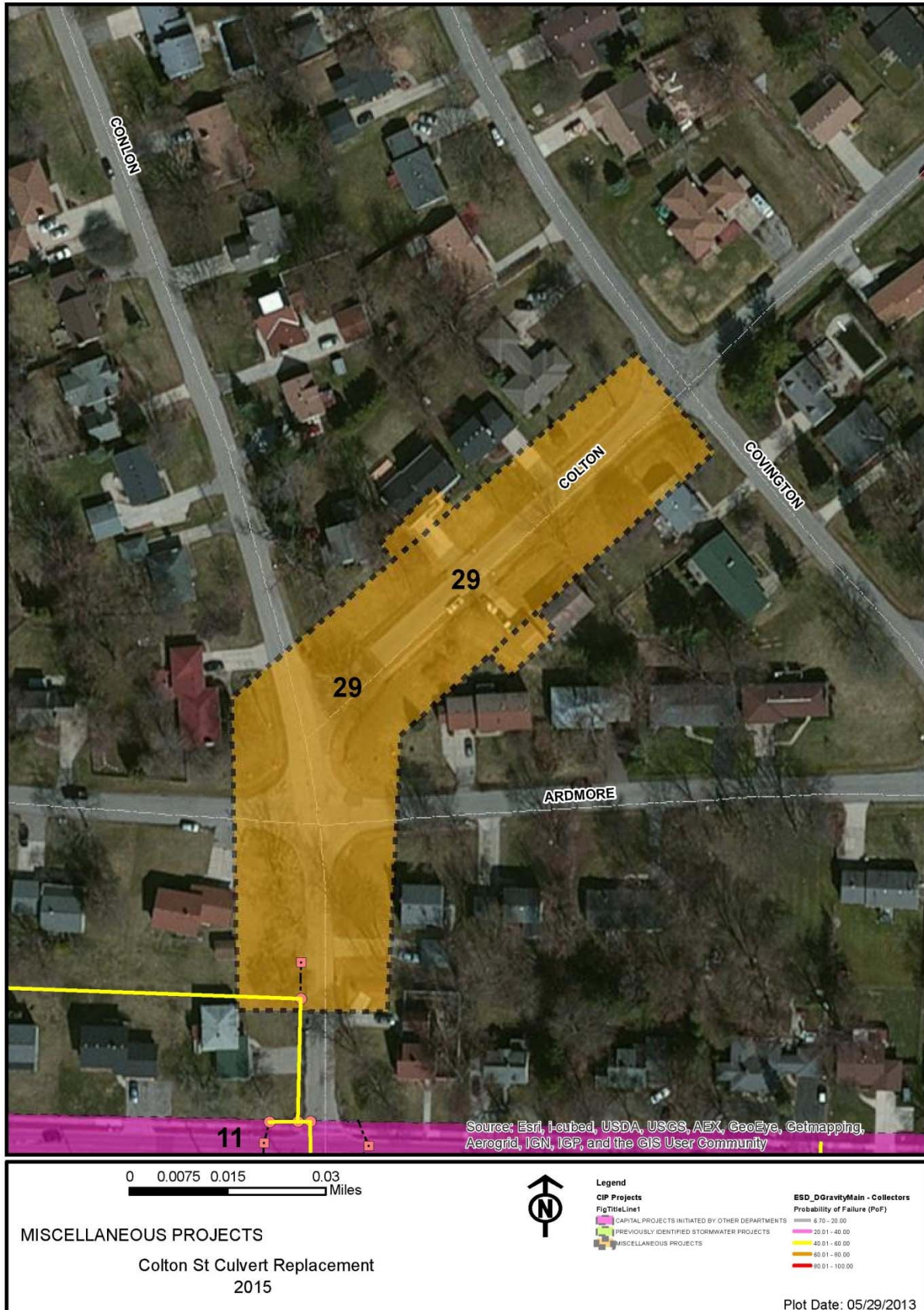
ESD_DGravityMain - Collectors
 Probability of Failure (PoF)
 8.70 - 20.00
 20.01 - 40.00
 40.01 - 60.00
 60.01 - 80.00
 80.01 - 100.00

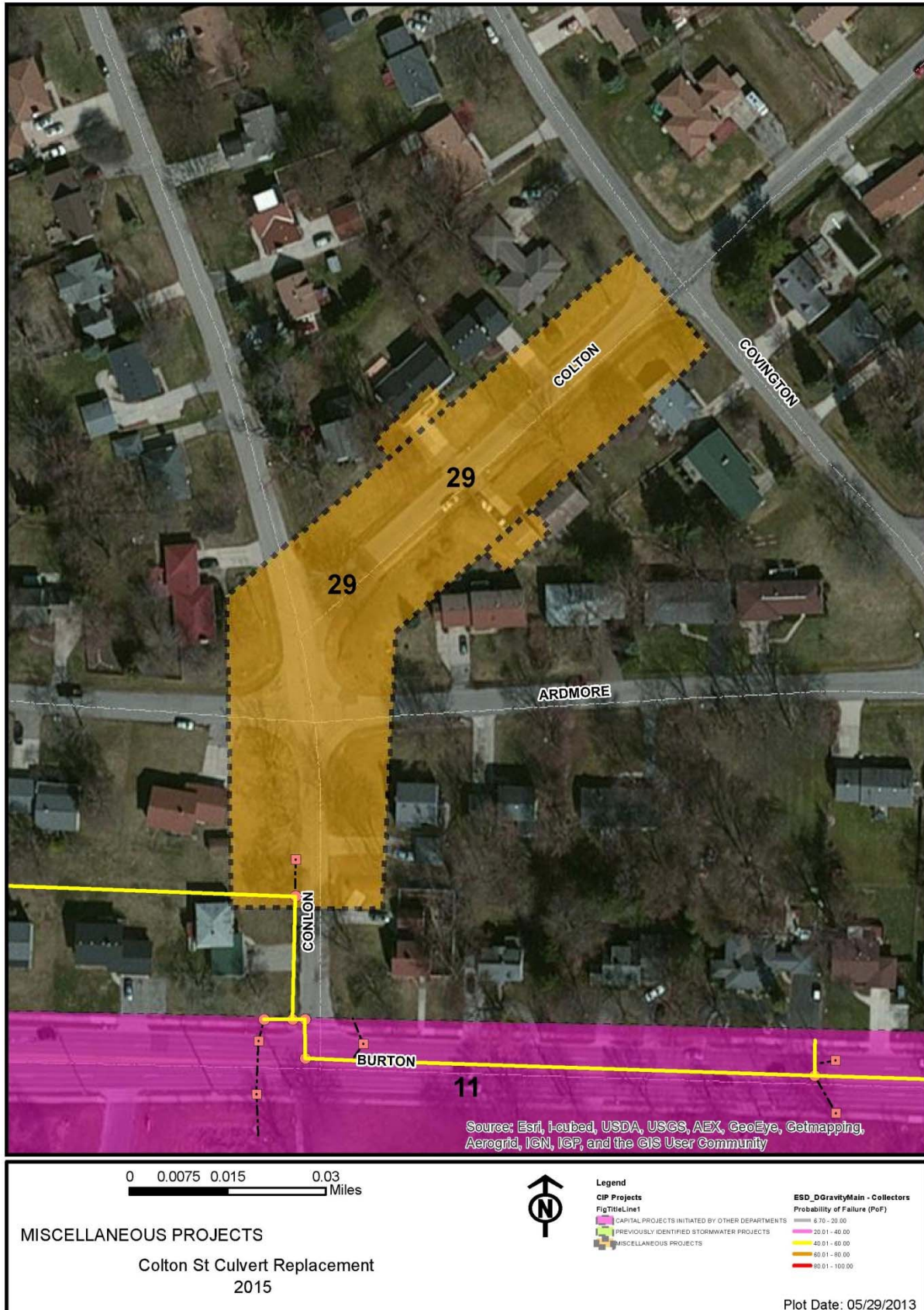
Plot Date: 05/29/2013



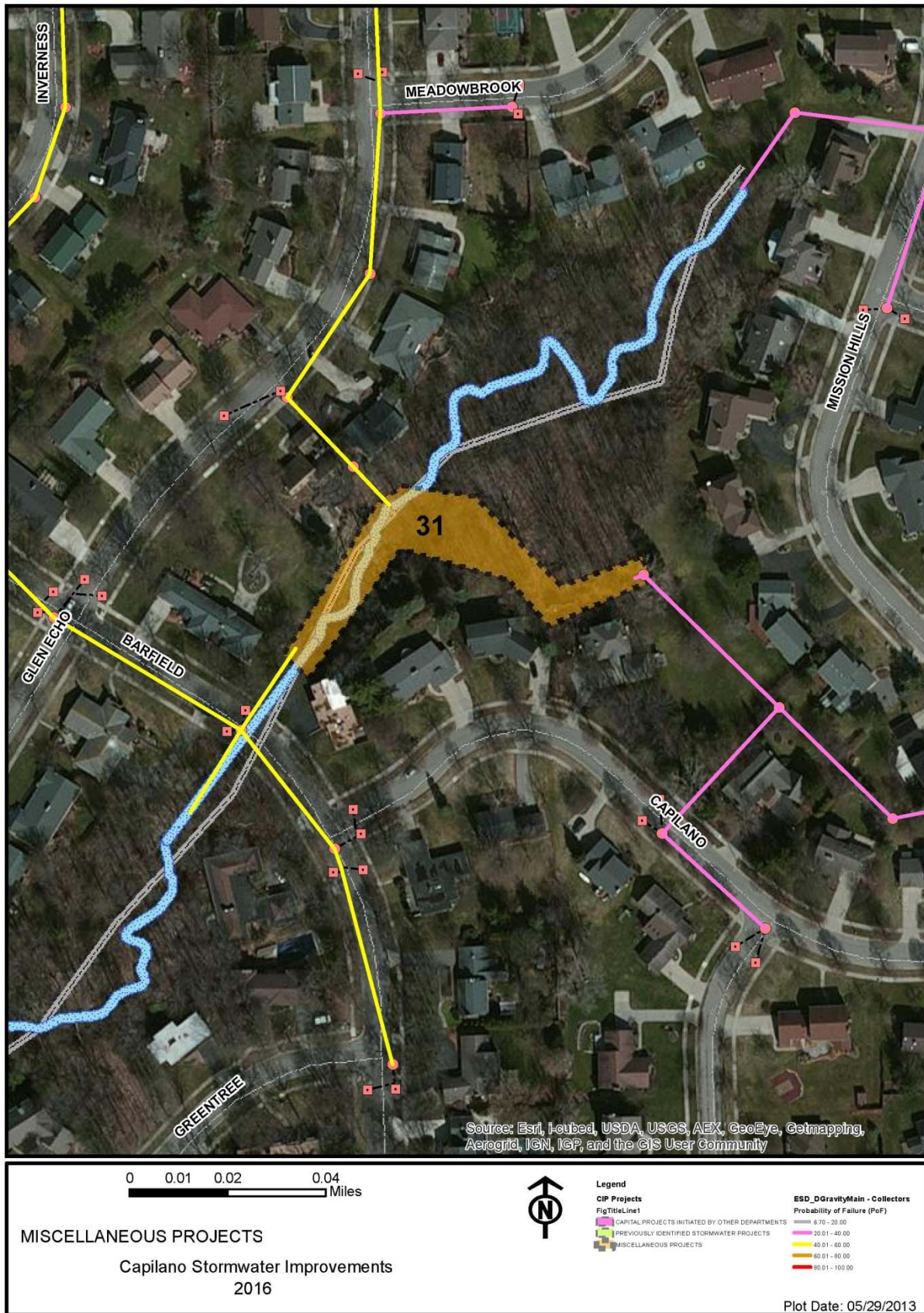






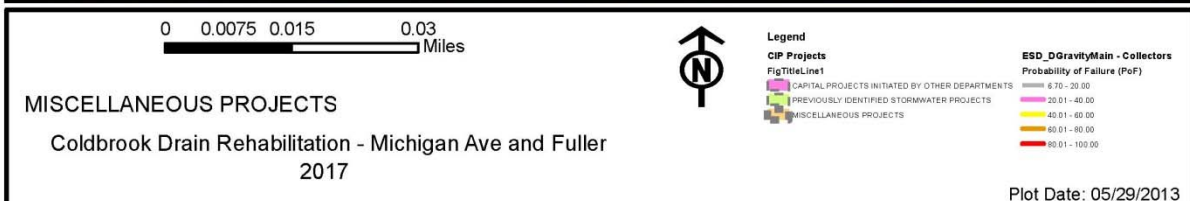
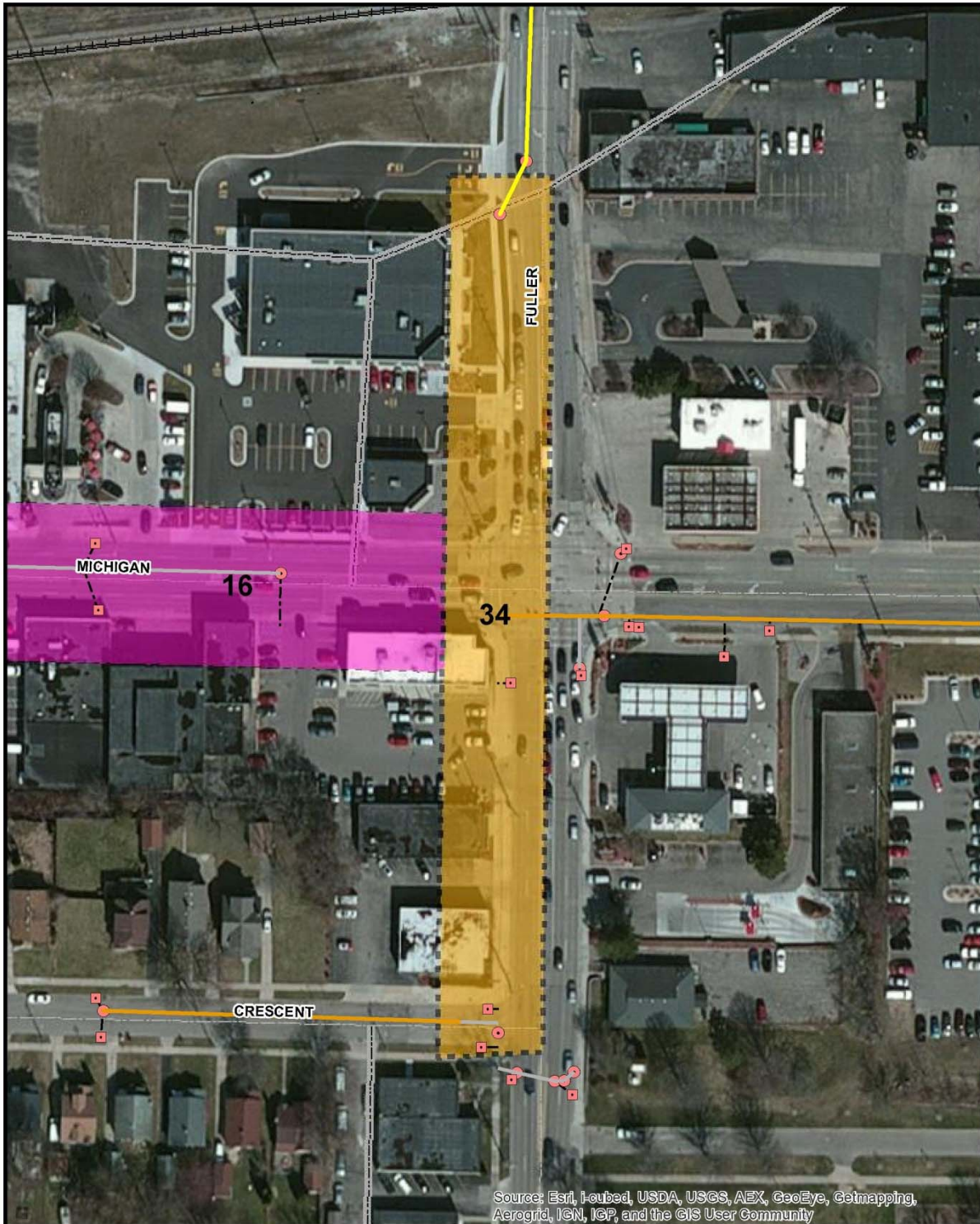


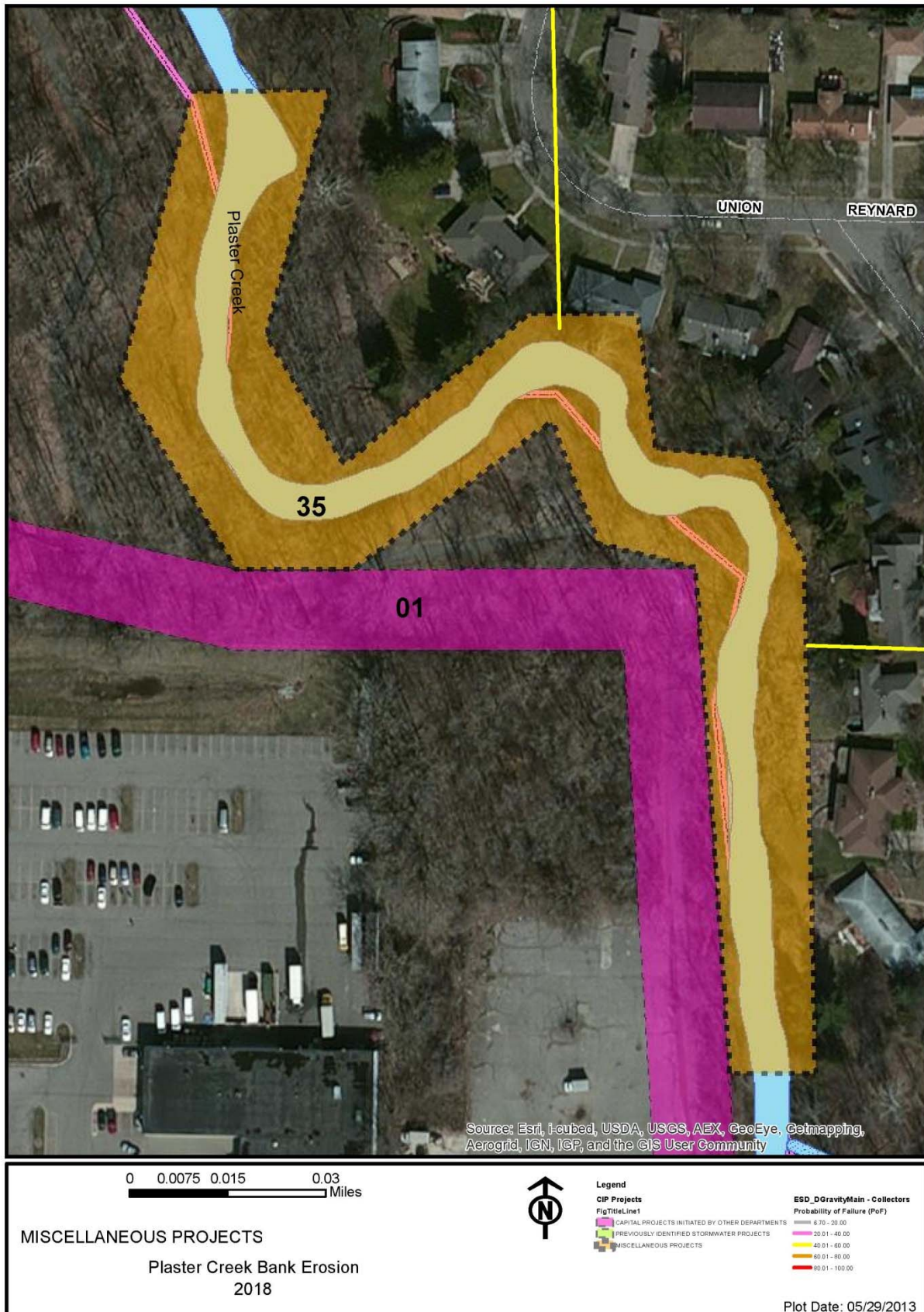


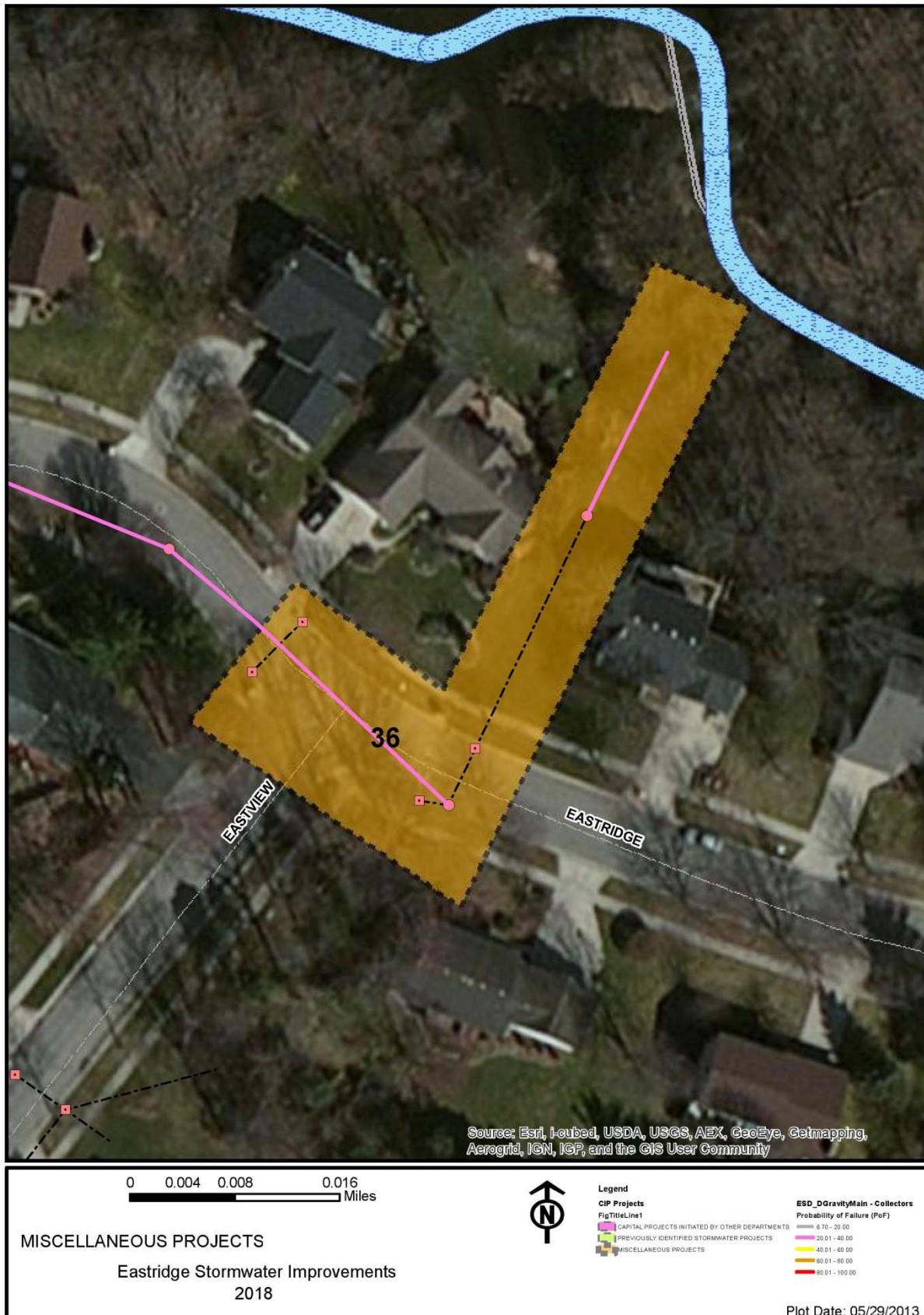






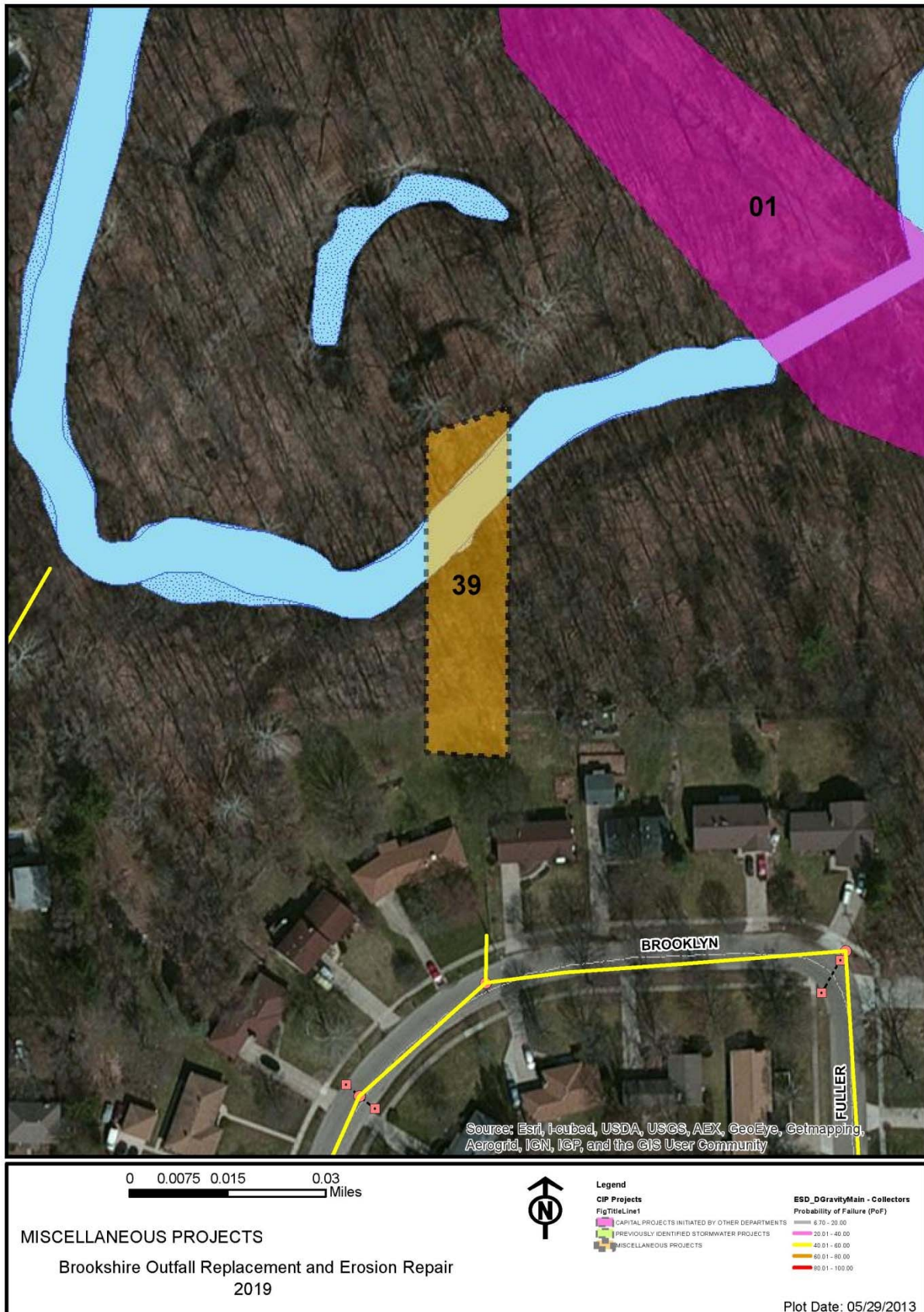












APPENDIX D. PROPOSED CAPITAL PROJECTS FY 2017 – FY 2021

Fiscal Year	Project Name	Revenue Amount
2017	Drainage Improvements and Emergency Repairs	\$80,000
2017	Kent County Drain Commission Special Assessments	\$45,000
2017	Moerland and Longmeadow Stormwater Improvements	\$117,470
2017	Burton-Breton Branch of Plaster Creek - Enlargement of Culverts	\$168,000
2017	Private Partnerships/Grant for Green Infrastructure	\$76,000
2017	Richmond Park Daylighting	\$36,673
2017	CIPP Rehab of Storm Sewers – Various Sites	\$100,000
	FY2017 TOTAL	\$623,143
2018	Drainage Improvements and Emergency Repairs	\$204,712
2018	Kent County Drain Commission Special Assessments	\$45,000
2018	Oakleigh Ave in Hogadone District - Channelizing and Cleaning	\$45,000
2018	Richmond Park Bioswales	\$60,000
2018	Richmond Park Daylighting	\$320,000
2018	CIPP Rehab of Storm Sewers – Various Sites	\$100,000
	FY2018 TOTAL	\$774,712
2019	Drainage Improvements and Emergency Repairs	\$131,489
2019	Kent County Drain Commission Special Assessments	\$45,000
2019	Indian Mill Creek Dredging	\$65,400
2019	Oakleigh Ave in Hogadone District - Channelizing and Cleaning	\$221,850
2019	Coldbrook Drain Rehabilitation - Michigan and Fuller	\$37,500
2019	Shawmut Hills Baseball Diamond and Channel Stormwater Improvements	\$74,300
2019	Capilano Stormwater Improvements	\$41,400
2019	Water Quality Improvement from Green Opportunity Plan	\$209,347
2019	CIPP Rehab of Storm Sewers – Various Sites	\$100,000
	FY2019 TOTAL	\$926,286
2020	Indian Mill Creek Dredging	\$370,600
2020	Maplegrove Detention Pond	\$78,300
2020	Plaster Creek Bank Erosion	\$75,975
2020	Coldbrook Drain Rehabilitation - Michigan and Fuller	\$212,500
2020	Drainage Improvements and Emergency Repairs 2020+	\$195,482
2020	Kent County Drain Commissioner Special Assessments 2020+	\$45,000
2020	CIPP Rehab of Storm Sewers – Various Sites	\$100,000
	FY2020 TOTAL	\$1,077,857

2021	Burton-Breton Branch of Plaster Creek - Channelization and Cleaning	\$37,995
2021	Maplegrove Detention Pond	\$443,700
2021	Plaster Creek Bank Erosion	\$430,525
2021	Drainage Improvements and Emergency Repairs 2020+	\$97,209
2021	Water Quality Improvement from Daylighting Plan	\$75,000
2021	Kent County Drain Commissioner Special Assessments 2020+	\$45,000
2021	CIPP Rehab of Storm Sewers – Various Sites	\$100,000
	FY2021 TOTAL	\$1,229,429