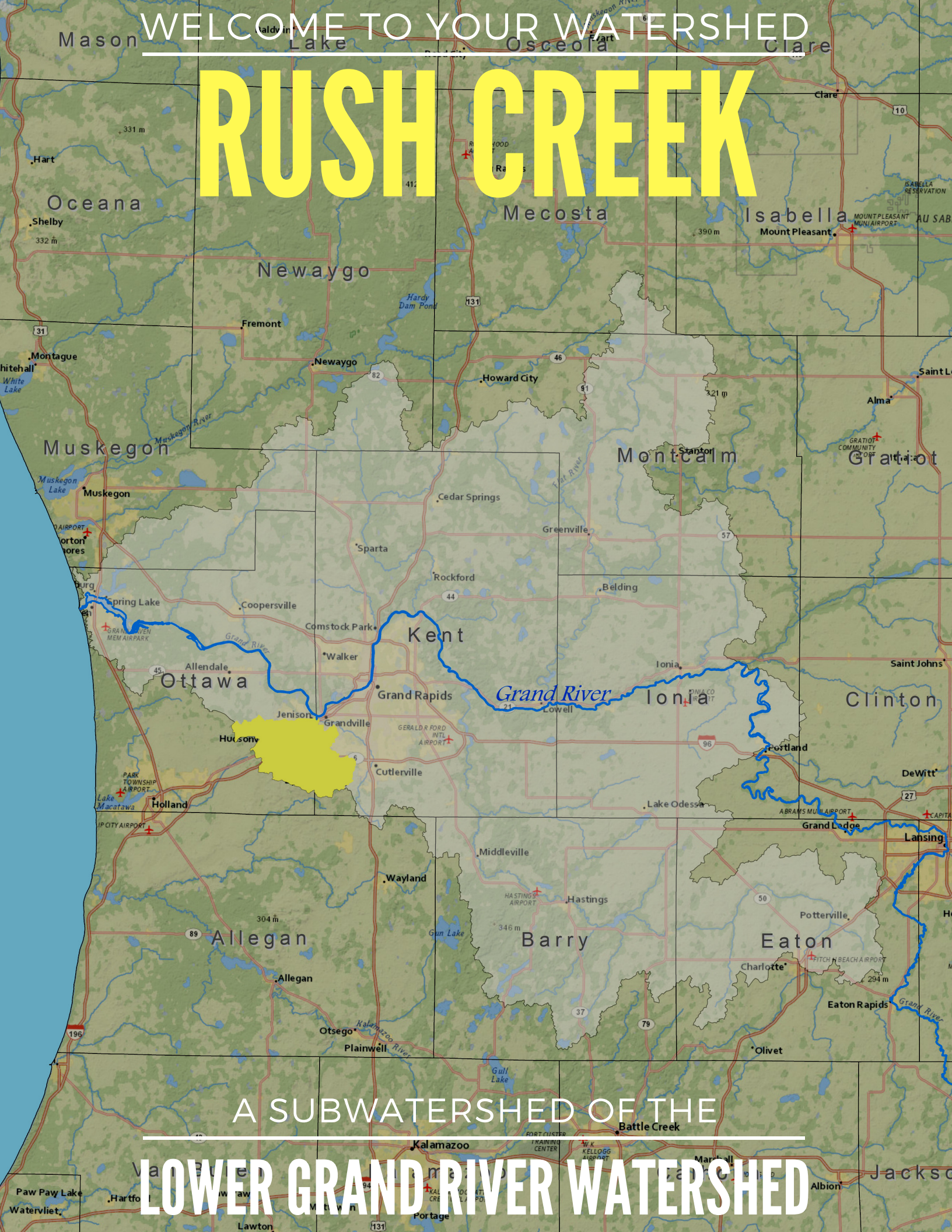


WELCOME TO YOUR WATERSHED

RUSH CREEK



A SUBWATERSHED OF THE

LOWER GRAND RIVER WATERSHED

Rush Creek Watershed

Hydrologic Unit Code (HUC): 04050006-0509/0511

Size: 38,041 acres

Land Use (% Total):

46% Urban

38% Agricultural

9% Forest Land

3% Wetlands

3% Open Land

1% Lakes

Trout Stream Miles: N/A

TMDLs: Other anthropogenic substrate alterations and Other flow regime alterations, no date

Pollutant Loadings:

Sediment - 742 tons per year

Phosphorus - 18,330 lbs per year

Nitrogen - 103,000 lbs per year

Priority Pollutant: Unstable Hydrology

Priority Sources & Causes:

Wetland loss: Drainage/filling for agriculture/development

Tiles and drainage networks: Agriculture land use practices

Filling of floodplains: Filling for agriculture development

Pollution Solutions:

Only rain in storm drains, they lead directly to lakes, rivers, & streams

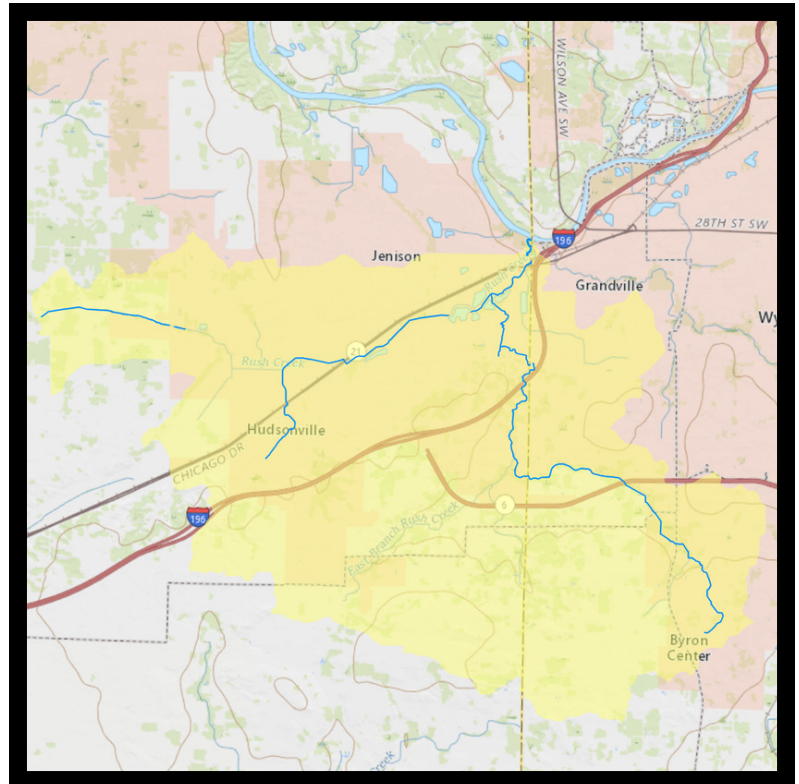
Pick up pet waste and dispose it in the trash

Wash your car on the grass or at a commercial car wash

Shovel first, salt second (or not at all)

Use Phosphorus-Free fertilizer and keep grass 3" long

Watershed Group



Learn more at
www.lgrow.org/lgrwmp