



## VOLUNTEERS NEEDED FOR TREE PLANTING

PLANTING TREES, GROWING COMMUNITIES.

**FRIDAY**

**April 29**

2:30 pm to 5:00 pm

**Sparta Sports Park  
Pedestrian Trail**  
Parking at Sundaes at the Park  
182 N State St.  
Sparta, MI 49345

Make a difference in a few hours that can last decades! ReLeaf Michigan, a non-profit tree organization, in collaboration with the Sparta Recreation Authority, the Village of Sparta, and Sparta Township, with funding from the DTE Foundation, is planting 20 trees along the Sparta Sports Park Pedestrian Trail on Friday, April 29th to provide shade along the new trail, enhance the aesthetic value of the sports park grounds, and celebrate Arbor Day!

ReLeaf Michigan's tree experts will be there to help volunteers how to plant a tree and oversee the event. Covid protocols will be followed. Masks and gloves are recommended. Social distancing is encouraged. Please wear closed-toe shoes and bring a shovel if you have one. Event occurs rain or shine (we're a hearty group!). No planting experience necessary. We hope to see you there!

To volunteer, please sign up at [www.releafmichigan.org/rsvp](http://www.releafmichigan.org/rsvp)

Questions, please contact Sue Blackall at 616-460-2429 or [sue.blackall@spartaschools.org](mailto:sue.blackall@spartaschools.org)

Thank You  
to Our  
Event

**DTE**  
Foundation

**SPARTA**  
SPORTS PARK

Village of  
**Sparta**

## How can you help the Earth?

We are connected by watersheds. Improving the watershed in which you live, improves the Earth! Rain and snowfall from Sparta's watershed flows into Nash Creek, to the Rogue River, to the Grand River to Lake Michigan. Planting native plants and trees is the only way to clean storm water and restore habitat for a healthy environment!

Students and community volunteers have been doing just that for over ten years. All we have to do is keep non-native, invasive species from coming back. But our restoration projects have grown so large that our small group of volunteers can no longer keep up. Please help weed at schools or in town along Nash Creek: any Tuesday or

Thursday from 9:30-12:00, and/or add your email and possible availability times to a work bee list. Work bees will start after the Annual Nash Creek Clean Up on May 14. No experience is necessary. Every minute you can give is appreciated! Contact Sue Blackall, sue.blackall@spartaschools.org or call or text 616-460-2429.

### • PROTECT OUR WATERSHED •

## SPRING TIPS

### CLEAR

Uncover and clean catch basins, drains, gutters, and downspouts to help avoid flooding.

### PLANT

Plant trees, native plants, and ground cover to soak up spring rains and provide food and habitat for pollinators. Learn more at [lgrow.org/Rainscaping](http://lgrow.org/Rainscaping).

### DISPOSE

Dispose of any household chemicals left over from spring cleaning or yard work at a Kent County SafeChem event or the Ottawa County Resource Recovery Center.

### PICK UP

Pick up pet waste and dispose in a trash receptacle. Sign the pet waste pledge at [lgrow.org/pollution/solutions](http://lgrow.org/pollution/solutions) for a free pet waste bag dispenser.

### PROTECT

Move stored chemicals such as salt, fertilizers, and pesticides to high areas where potential flooding cannot reach.

### MAINTAIN

Inspect and pump septic tanks and make sure your sump pump is working properly. Install a water alarm in basement in case of flooding.

Visit [www.LGROW.org](http://www.LGROW.org)  
for more information

**LOWER GRAND RIVER  
ORGANIZATION of WATERSHEDS**

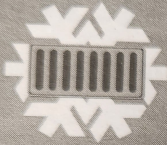
Smile.

**SPARTA**  
Membr  
Join the Sparta Chamber of Commerce celebration of local businesses invited to attend, by May 1, 2022, for several categories.  
Not a Chamber member? Join our membership program today! The Sparta Chamber of Commerce promotes economic growth by implementing programs, and by utilizing small business in businesses thrive.  
Our work has made a difference in revitalization. As organizations like West Michigan Foundation provide grant funding, always looking for business!



## • PROTECT OUR WATERSHED •

## WINTER TIPS



## SHOVEL

Shovel snow onto vegetated areas. Grass and plants will act as a natural filter once snow melts, reducing runoff that goes down stormdrains directly to rivers and streams.



## PLAN AHEAD

Shovel and scrape early and often. De-icers work best when there is only a thin layer to remove.



## USE LESS

A little salt goes a long way. Apply sparingly, and remove slush once the snow melts to prevent refreezing.



## RECYCLE

Save money by reclaiming salt for re-use by sweeping or vacuuming the solids from the sidewalk after the storm.



## STORAGE

Practice good housekeeping by storing salt or other de-icers under a roof or other cover to minimize polluted runoff.



## VEHICLES

Winterize vehicles so that there are no leaks. Do not wash the car in the driveway - ensure that dirty wastewater not entering the storm sewer.

• VISIT [WWW.LGROW.ORG](http://WWW.LGROW.ORG) FOR MORE INFO •

The Value of  
Sparta  
What a neighborhood should be.

SPARTA  
TOWNSHIP

## Winter

## SNOW SHO

Section 58-102

The ordinance shall require the owner and/or occupant of any property within 24 hours of an accumulation of two inches of snow or more to reduce the risk of



regular

November

How

to m

## SNOW P

Section 58-

All snow must be removed from the driveway if it

November 2022

• PROTECT OUR WATERSHED •  
WINTER TIPS

## ADOPT A DRAIN

Have you adopted a drain yet? Storm drains need to be cared for even in the winter. Do your part to care for our watershed and adopt a drain today!

[adoptadrain-lgrow.org](http://adoptadrain-lgrow.org)

## SHOVEL

Always shovel storm drains from the sidewalk. Shovel snow onto vegetated areas, where meltwater can soak into the ground. This reduces runoff that goes down storm drains and directly to rivers and streams.

## MARK DRAINS

Mark your storm drains in late fall prior to snow fall. This will show you where to shovel during each snowfall. Keeping your drains clear of snow is an easy way to prevent flooding.

## MAINTAIN

Winterize vehicles to prevent leaks. Wash cars at a commercial car wash, where soapy water is reused or goes to the sanitary sewer.

## USE LESS

A little salt goes a long way. Apply sparingly and remove slush once the snow melts to prevent refreezing. Salt in our stormwater system can be harmful to aquatic life.

## STORE SAFELY

Practice good housekeeping by storing salt or other de-icers under a roof or other cover to minimize polluted runoff.



• VISIT [WWW.LGROW.ORG](http://WWW.LGROW.ORG) FOR MORE INFO •

WHO IS READY  
TO DECORATE

Tha

Huge than  
volunteers v  
sands of lig



DO

# Village of Sparta Outreach and Education Opportunities

| Date           | Area  | Work  | People | Hours   |
|----------------|---|---|--------|---------|
| Jan. 28, 2022  | Applevue Nature Trails                        | 3rd-5th graders cut Japanese honeysuckle  | 125    | 3 ⅓ hr  |
| Feb., 4, 2022  | Applevue Nature Trails                        | 3rd-5th graders cut Japanese honeysuckle  | 125    | 3 ⅓ hr  |
| Feb., 11, 2022 | Applevue Nature Trails                        | 3rd-5th graders cut Japanese honeysuckle  | 125    | 3 ⅓ hr  |
| Feb., 28, 2022 | Applevue Nature Trails                        | 3rd-5th graders cut Japanese honeysuckle  | 125    | 3 ⅓ hr  |
| March 4, 2022  | Applevue Nature Trails                        | 3rd-5th graders cut Japanese honeysuckle  | 125    | 3 ⅓ hr  |
| March 11, 2022 | Applevue Nature Trails                        | 3rd-5th graders cut Japanese honeysuckle  | 125    | 3 ⅓ hr  |
| April 18, 2022 | Sports Park Pedestrian Trail Along Nash Creek | Rob Stephens crew cut Japanese honeysuckle 240 yards X 8 yards (DPW wood chipped) | 6      | 4 hours |
| April 18, 2022 | Sports Park Pedestrian Trail Along Nash Creek | Releaf Michigan Arbor Day planted 30 trees  | 30     | 3 hours |
| May 31, 2022   | Sports Park Pedestrian Trail Along Nash Creek | 2 Fourth grade classes planted sedges on the banks. 80 sedges                     | 50     | 2 hrs   |
| June 1, 2022   | Sports Park Pedestrian Trail Along Nash Creek | 2 Fourth grade classes planted sedges on the banks. 80 sedges                     | 50     | 2 hrs   |
| June 2, 2022   | Sports Park Pedestrian Trail Along Nash Creek | 2 Fourth grade classes planted sedges on the banks. 80 sedges                     | 50     | 2 hrs   |
| June 6, 2022   | Sports Park Pedestrian Trail Along Nash Creek | 2 Fourth grade classes planted sedges on the banks. 80 sedges                     | 50     | 2 hrs   |
| Nov. 4, 2022   | Applevue Nature Trails                        | 200 kindergarteners tossed 2,000 wildflower                                       | 200    | 45 min. |

|                    |  |  |    |       |
|--------------------|--|--|----|-------|
|                    | Two 20 ydX20yd prairies  | seed balls   |    | each  |
| Dec. 1, 2022       | Sparta Sports Park woods   | H.S. Biology class cut Japanese honeysuckle  | 25 | 1 1/2 |
| Dec. 2, 2022       | Sparta Sports Park woods   | H.S. Biology class cut Japanese honeysuckle  | 25 | 1 1/2 |
| Dec. 6, 2022       | Sparta Sports Park woods   | H.S.I Biology class cut Japanese honeysuckle   | 25 | 1 1/2 |
| Thursdays May-Sept | Nash Creek from Balyeat Field to Rogers Park   | Ladies helped me weed and wood chip for 20 weeks from 9:00-12:00                                 | 4  | 60    |
| May-Sept           | Nash Creek from Balyeat Field through Pedestrian Trail   | At least one high school helper with me to weed and plant twice each week for 2 hrs for 20 weeks | 2  | 40    |
| April-Nov          | Nash Creek from Balyeat Field through Pedestrian Trail, Sports Park Pedestrian Trail<br>Sparta School Wildflower gardens | Two days worked alone twice each week for 2 ½ hrs for 28 weeks                                   | 1  | 140   |